

VILLAGE VOICE



Shoppers Lifeline

The Bantham Saturday bus service

April - May 2013

The community magazine of Bantham, Buckland, and Thurlstone



NUMBER 180
APRIL - MAY 2013

Who Puts The Spring In Thurlestone?

Spring is here (well, nearly) and Thurlestone is a-buzz. Not with as many bees as usual, but with an upsurge of community-led projects to gladden the heart of any best-kept village judge.

Our front cover shows the bus now providing Bantham and Buckland with a Saturday shopping service to Kingsbridge (see the article overleaf). These sometimes neglected outposts of the parish should drink a toast to Tony Goddard, the parish councillor whose efforts have brought this project to fruition. They should also take to heart his message - use it or lose it.

Bantham can now also take to heart its own defibrillator, thanks this time to the Marshalls and their phone box team's initiative - and the generosity of parishioners.

And perhaps most significantly of all, the prospect of early superfast broadband via fibre optic cable is being powered forward by another broadscale community-led project and the initiative of local residents. It will also need government support, and private investment, but there's no doubting the drive from within this community to get it up and running - just like all the other projects. ***Allez Thurlestone!***

Front Cover : The Bantham shopping bus

Founder Dudley Drabble

Editor PATRICIA MACDONALD
25 Mead Lane
Thurlestone
TQ7 3PB
01548-560436
e-mail: rbnmacd@aol.com

Advertising Manager JO PARKIN
Ardentigh
Court Lane
Thurlestone
TQ7 3ND
01548-561215
e-mail: tsr.parkin@gmail.com

Accounts GAVIN PRICE

Production Manager TOM TRENDER

Production Team

TED ABEL
JOHN & MAUREEN BAKER
SHIRLEY BARNES
PAT CRAWFORD
MARGARET CULLUM
IAN & JANET FRASER
NORMA KENDALL
JUDITH LE GRICE
ROSEMARY MACKAY
AL PARKER
JAN TRENDER
CHRIS & LISA WHITE

Distribution Organisers

LINDA CHILCOTT
PETER HURRELL
GRAHAM & VAL PALMER

Mail Order Copies JUDITH REYNOLDS
Pilgrim Cottage
Post Office Lane
Thurlestone
TQ7 3ND
01548-560912

Published Bi-monthly

SHOPPERS LIFELINE

THE BANTHAM SATURDAY BUS SERVICE

Thurlestone village may be considered fortunate to have a regular bus service into the shops and facilities of Kingsbridge provided by Tally Ho coaches, but Bantham and Buckland have no service at all. However, thanks to the application made by the Thurlestone Parish Council supported by West Alvington Parish Council for a Towns and Parishes Fund grant provided by Devon County Council that is all about to change.

For a trial period beginning on **Saturday 23rd March 2013** the Coleridge Bus will be hired to run a free "Life Line" bus service to and from Bantham and Buckland every Saturday for those in the two villages, and West Alvington, who do not own a car or who find it more convenient once a week to make use of the new service.

The first pick-up will be at Bantham Village Stores at 9.30am travelling on to Chapel Cross in Buckland and then to West Alvington where the pick up point will be opposite the School. The bus will arrive in Kingsbridge at approximately 10.00am. Whenever possible the arrival and pick up point in Kingsbridge will be on the Quay, but by agreement with the driver arrangements can be made to deposit and collect passengers from the two supermarkets. Also, if the bus is parked on the Quay, it will be possible again by arrangement with the driver to return to the bus and leave shopping in it.

The return service will leave Kingsbridge Quay at 12.30pm and will return to Bantham via West Alvington and Buckland at about 1.00pm.

The service will run until the **17th August 2013** except for Saturday 6th April when the bus will be off the road for its annual MOT.

This is a pilot scheme to establish the popularity of the service. The clear message is that if you want the service use it in the hope that evidence of demand will justify some continuation of the project.

SATURDAY BUS TIMETABLE

Depart Bantham Village Store	09.30 am
Pick Up Buckland Chapel Cross	09.35 am
Pick Up West Alvington (opp. School)	09.50 am
Arrive Kingsbridge Quay	10.00 am
Depart Kingsbridge Quay	12.30 pm
Drop off West Alvington	12.40 pm
Drop off Buckland Chapel Cross	12.55 pm
Arrive Bantham Village Store	1.00 pm

Parish Council Meetings

Meetings held 4th February & 4th March, 2013

News & Views by Citizen

ATTENDANCE

In February seven Parish Councillors, the Parish Clerk, District Councillor and seventeen members of the public were present, and in March the number of Parish Councillors dwindled to four, with the Parish Clerk, District Councillor, Kate Taylor and Tony Leney from the Environment Agency, together with twelve members of the public attending.

OPEN FORUM

Saturday Bus This is a pilot scheme, running from 23rd March to 17th August 2013, to provide Bantham and Buckland with a Saturday morning service to Kingsbridge, using the Coleridge Bus. It will not affect the existing Thurlestone bus service.

Planning

Sea Breeze Neighbouring property owners have expressed great disquiet at this revised planning application, the outcome of which will be on 19th March. The Parish Council was thanked by residents for their support.

Folly Farm Bantham residents affected by the use of a marquee on the banks of the river for events hoped that the Parish Council would support their objections to the proposed extension to activities on this site. Our MP has promised residents that she would look into the problem.

16 Meadcombe Road Parish Council were asked to make a site visit to see the impact this development would make on adjoining property.

Memorial Bench The new bench (in memory of Julian Lee's mother) has been located adjacent to the churchyard wall.

HIGHWAYS

'Boulders' have been obtained to edge the road at the top of Thurlestone main street, adjacent to the Thurlestone sign. The District Council is to be advised that a wall near the phone box in Buckland is collapsing into the road.

FOOTPATHS

The footpath to Hope Cove is to be re-routed following the recent cliff collapse.

SCHOOL

Councillor Andrew Rhymes said the new Federation (with West Alvington and West Charleton) is working well. Play equipment needs refurbishment and, due to a very generous donation of £1000, this can now be done.

TREES

Councillor Charles Mitchelmore said the *leylandii* trees at Island View had been felled but the roots still need to be removed. A tree on the bend at the top of Buckland Hill, on Evans Estates land, is in a dangerous condition and this will be reported to the estate by Councillor Tony Goddard. Reported that the trees

adjacent to the old telephone exchange have all been removed, despite South Hams District Council's assurances that some would be retained. The Parish Council has written to the SHDC about this, and their response is awaited.

BROADBAND

No response to our application yet from DEFRA but if all goes to plan a fibre optic cable could be laid this summer, which could coordinate with a mobile phone mast.

PARISH CLERK'S REPORT

Neighbourhood Watch reports were not coming to Yarmer Estate and this will be reported to the Police.

Cobbled road by church. No owners could be identified via the Land Registry. Parish Council will now contact the Church, Evans Estates and Yarmer Estate about future maintenance. SHDC are not interested in the question.

Potholes. Some have been repaired - and a lot have not.

DISTRICT COUNCILLOR'S REPORT

Councillor Ian Bramble said savings of £600,000 had been/would be achieved by rationalisation of staff and shared management. Renting space at Follaton House could raise £60,000 and change of auditor £40,000 a year. Closing around 16 public conveniences could save a further £80,000, but there is opposition to this. Free parking at Follaton House is under discussion. Morrison's application to instal a petrol-filling station in Kingsbridge needs parishioner response. He has about £200 available for our parish, under his Locality Budget, for "priority needs".

ENVIRONMENT AGENCY

Kate Taylor spoke about the need for a Community Flood Plan particularly in relation to West Buckland and flash flooding. She left documentation for perusal by the Parish Council. Councillor Nigel Hurrell said that, at Buckland, the local streams had not been cleaned out for many years and the drain piping under the road was too small to cope with excess water, both of which caused problems in times of heavy rainfall.

BEST KEPT DEVON VILLAGE

The Parish of Thurlestone Society had again entered Thurlestone into this competition. Parishioner Paul Martin had agreed to maintain some of the parish benches, which was much appreciated. 'Boulders' had been obtained with which to tidy the roadside immediately below the Thurlestone village sign. Rodney Stidston and Councillor Nigel Hurrell have kindly agreed to do this work, which POTS chairman, Chris White, said POTS might be able to fund, but an estimate of the cost would be required in advance.

NEXT PARISH COUNCIL MEETING

The next meeting will be on Monday 8th April, 7.30pm in the Yeo Room.

The Parish Council welcomes parishioners to come along to Council meetings. At the start of each meeting there is a slot called *Open Forum*, which is an opportunity for people to ask questions and to 'have their say' about any parish matters which may be concerning them.

PARISH HALL NEWS



Chairman: Neill Irwin

Our David Newton/Alan Barnes concert on 2nd February was a great success with 136 people enjoying a superb night of jazz from an internationally acclaimed duo. It was great to find that we had hit a chord with the audience – and added to our fund-raising efforts. A win-win situation.

By the time you read this we will already have held our evening with the Porter Family on Easter Saturday 30th March. Watch this space for an update in the next issue if you missed it.

We're also delighted to be welcoming back pianist Tim Abel with two other musicians – the exciting percussionist Rhys Matthews for a return visit, and a new face in the brilliant young cellist Philip Handy. They will be performing on 27 April and many of us will be queuing for tickets following Tim's three previous excellent concerts in our Parish Hall.

We look forward also to a concert by our local musician Henry Tozer on 13 July as well as the Car Boot Sale on 22 June and the annual Barbecue, Boules and Bowls on 30 July. We are very grateful to the residents of Old Rectory Gardens and especially Bryan Rigby who will be hosting Cream Teas in support of the Parish Hall on 8 June. Further details about these events will appear in the June issue.

Once again **Calling all artists and Crafters...** There is an entry form in this edition of *Village Voice* for the Arts & Crafts Exhibition in the Village Hall over the Bank Holiday Weekend 25th to 27th May. It will be a great half-term event which we hope will also encourage people to think about taking up crafts such as watercolours, weaving and quilting. All entries are encouraged so please don't be shy; return the entry form and put your work forward. The organisers (not to mention the visitors) would love to see a huge display of artwork and crafts of all kinds – painting, drawing, photography, embroidery, knitting, crochet, sewing, woodwork, flower arrangement, or whatever you've crafted. The exhibition will open for viewing in the afternoon of Saturday and there will be a small fee for visitors but also teas in the Yeo Room and a raffle.

STOP PRESS

The Parish Hall AGM took place at 6pm on 19 March. The Committee and ten residents attended to accept the Report and Accounts and to hear a review of the year including news of regular users and of the success of the solar panels despite the dismal summer. Chairman thanked everyone for their support throughout the year, especially Chris White who had stood in for him during his absence in Australia. He explained that the events and regular fees had turned in a profit of £4,000 in 2012 and the programme for 2013 promises a good mix of music and involvement.

Superfast Broadband – Superslow Bureaucracy!

Excellent news! The South Hams Broadband share offer has been **extended to June** – which is a great relief to those of us who have been worried that the 27th March deadline was looming too quickly.

The reason for the new closing date is straightforward, although still frustrating – **continuing bureaucratic delay within Government** in relation to the award of our Rural Community Broadband Fund grant.

Perhaps unsurprisingly, a policy objective that seemed simple in concept – to provide a subsidy to rural communities to assist them in developing viable and sustainable broadband services – has proved tortuously complicated and confusing in practical execution.

The points of confusion are too many to list – the latest being the difficulty of defining the 'final 10%' before BT has had its chance to upgrade the 'first 90%' (which could take years...). If it is of any comfort, we are not alone in feeling frustration, as dozens and dozens of projects across the country have been similarly affected and delayed.

But, thanks to some strenuous lobbying activity at all levels of Government – really, all the way to the top! – we think we may have found a way through the bureaucratic knotweed. A showdown meeting with Defra in the last week of March paved the way for a workable solution that we think will enable us to obtain the sort of targeted assistance that the Government originally had in mind.

So, within a very few weeks, we hope to have received formal notification of our grant award – and existing and potential investors will be the first to hear!

Some more FAQs...

An initial investor briefing session was held in the Thurstone Hotel on Tuesday 12th March, attended by around 40 local residents, some of the highlights of which have been posted to www.southhamsbroadband.co.uk. Here are one or two new FAQs to be added to the existing list on the website.

Q: Now that the share offer has been extended to June, can I invest an amount and claim tax relief in two separate tax years?

A: Our thanks to a resident for highlighting this very interesting issue. The original intention, in closing the offer before the end of March, was that tax relief would be taken against income in the 2012/13 tax year. With the offer extended, it is perfectly possible now to make an investment after the start of the next tax year, applying a portion of the invested amount against income in the 2012/13 year, and a portion also in the 2013/14 year – effectively increasing the amount that can tax-efficiently be invested for some people.

Q: What happens if the RCBF grant is not awarded?

A: There are really only two possibilities:

1. First, we consider alternative technology options, perhaps less expensive initially, such as an advanced form of fixed wireless. Although not a permanent solution, as fibre-to-the-home would be, it would still provide 'superfast' speeds of 30Mbps for those who needed them, as well as buying us time until we could put in place lower cost financing at a later date for the transition to fibre.
2. Secondly, if however much we try we cannot make the numbers add up to provide a reasonable return to investors, then we must sadly abandon the scheme.

Q: In the event of 2 above, is any money I have invested still quite safe?

A: Be assured: if you choose to invest in South Hams Broadband, and the Directors decide that the project is simply not viable, and abandon it, your money will be returned to you intact.

Conclusion

Patience will be rewarded! Please invest in South Hams Broadband, via Fund the Gap, (see next page) and help make it happen.

How to Invest in South Hams Broadband via Fund the Gap

The process of investing money in South Hams Broadband using the Fund the Gap website involves several stages, which are not immediately apparent, so this article by Chris White is intended as a beginner's guide to the process.

To Register

1. Go to www.fundthegap.com,
2. Click on the box which says "I understand", and
3. In the black bar at the top of the home page of the website you will see the word "Register". Click on this, and enter the data requested. *Kingsbridge* is available to select from the drop down box, as your Town. Registering is a multi-page operation, and will ask searching questions to ensure that you understand what you are doing. At the end of the process, it will not tell you that you have successfully registered, but it will send you an email to confirm this.
4. You have to open this email and click on the link contained in it to activate your account with Fund the Gap, before you can go any further.

To Invest

1. Once your account is activated, you need to click on the word "Login" on the home page of the website.
2. Enter the details you used when you registered (e-mail address and password).
3. The black bar will now contain the words "My Account". Click on these words.
4. Then click on "Account Balance", in the drop down menu which will appear. This will take you to another page, which has the option "Deposit Funds" in the blue box.
5. Click on this, and enter the data requested i.e. how much you want to deposit.
6. During this process a small box will appear containing the Name, Account number, and Sort Code of the Fund the Gap client account. MAKE A NOTE OF THESE AS YOU WILL NEED THEM LATER, or wait for an email containing the information.
7. When you complete this process, the amount you entered as your deposit will appear in the Account Balance page, with the status "Pending" at the right hand end of the row of information. At the left hand end you will see a Reference number. MAKE AN EXACT COPY OF THIS AS WELL (or wait for the email, as in 6 above), making sure that you differentiate between upper and lower case letters.

Transferring Money

You have now completed the process, and are at the point where you actually have to transfer some real money into the account, which can only be done by electronic transfer. If you are set up for internet banking, you can do this yourself, otherwise you will have to ask your bank to do it for you. Either way, MAKE SURE THAT THE ACCOUNT NUMBER, SORT CODE, AND PAYMENT REFERENCE YOU PREVIOUSLY NOTED, ARE ENTERED CORRECTLY.

Allocating Your Funds to the Chosen Investment Project

1. Once the money has arrived in your Fund the Gap account (which may take a couple of days), the status will change to "Approved", and you can complete the process of investing. On the home page of the Fund the Gap website, type "South Hams Broadband" into the search box at the top of the screen and hit the Enter key.
2. Click on the entry for South Hams Broadband, when it appears, read the Important Notice, and click on "Agree".
3. Finally, click on "Invest in this Business" in the blue box and follow the instructions. Your successful completion of the investment process will be confirmed by email.

New sustainable houses at Parkfield

Sustainable Design Collective are the builders, on behalf of the South Devon Rural Housing Association, erecting the new housing on the site of the old Telephone Exchange (corner of Parkfield). You will have noticed that the four new houses are now arriving and these will be craned on to the site in early April. Di Parkin has provided this update on the project.

What is the design?

The development contributes to the local and national goals for new sustainable and affordable housing, meeting local needs for the highest quality housing, at a price that can be afforded by people who have come from the community, but are increasingly priced out of the local market. The houses are the most highly insulated and sustainable, using the greenest technology. They will be comfortable and affordable, and also have very low running costs, because of their energy efficiency.

The site provides four dwellings in the form of two pairs of semi-detached dwelling, each 3 bed / 5 person. This is an intensive use of the site, but includes both front and rear gardens for each property, with sunny sitting out areas, accessible from living rooms.

All rooms have natural daylight from windows or for two bathrooms, roof windows; each dwelling has, in the traditional manner, an accessible loft with natural daylight provided by a window for storage including a finished floor surface. There is a sizeable "country" kitchen dining space (separate sitting area).

Top floor windows are placed hard up against the overhanging eaves in the local cottage manner. Roof materials reflect both old and new unequal pitches and mono pitches with slate type materials and zinc finishes found in old and new buildings, with lime rendered walls finish, in reflection of the older local properties.

Four dedicated parking spaces are provided on the north-east corner of the site. The removal of the trees allows a new frontage to the south west and south east as requested by council officers. The existing ancient wall has been retained off the raised footpath.

Progress so far

The old telephone exchange has been demolished, the foundations and rainwater recycling tanks dug in. There have been a couple of problems, outside of our control, which may have an impact on villagers. The old telephone exchange was not properly connected to the sewers and we therefore need to dig up the sewage connections to the road, which we had not expected. This will involve a short period of traffic lights to allow people on and off the road.

Also, contrary to the plans, the water board had run the water pipe for the whole estate straight across the telephone exchange site, so we will need to make alterations to the connections.

Are you in housing need?

These houses are intended for local families, so if you are local and in housing need you should contact South Hams District Council Affordable Housing Team, as you will need to be registered with them to be eligible for one of these houses.

Contact us

If you have any concerns or questions do please contact Di Parkin at Sustainable Design Collective on di.parkin1968@gmail.com Phone 07815146149, or Steve Prime, South Devon Rural Housing Association, info@southdevonrural.com Phone 01803 863550.

café | garden centre | dell | gallery

Avon Mill

perfect garden PLANTS
fab FOOD for the larder
gorgeous GIFTS for friends
delicious café EATS & treats
stylish home PARAPHERNALIA
amazing ART
clotted cream TEAS

come & enjoy!

Avon Mill Garden Centre, Loddiswell
Kingsbridge, TQ7 4DD T:01548 550338

OPEN 9AM-5.30PM MON-SUN

www.avonmill.com

M.G.M. LANDSCAPES



All aspects of
Landscaping:

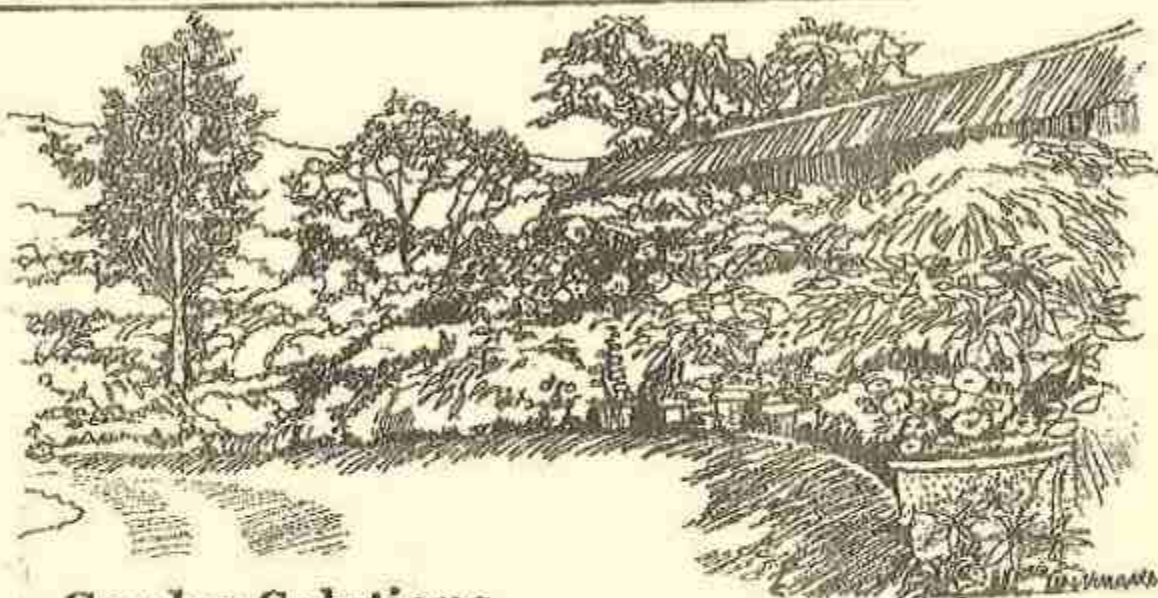
- Walls
- Patios
- Pergolas
- Ponds
- Decking

Creating complete Gardens:

- Planting
- Turfing
- Maintaining the finished Garden

HND in Horticulture
Established 20 Years

Tel: 01 548 550754



Garden Solutions

Tel: Ruth Middleton

Professional Garden Services

Mob 07746989976

High quality garden maintenance Border design & planting
Specialist Pruning Hedge trimming Grass Cutting & Lawn care
Tub & Basket design/planting

THURLESTONE HOTEL



Discover another world... Open to non-residents...

Margaret Amelia Restaurant
Four Course Table d'Hôte Dinner
Traditional Four Course Choice Sunday Lunches

The Terrace and Lounge
Morning Coffee ~ Lunches ~ Afternoon Tea

Varmer Suite
Weddings ~ Conferences ~ Functions ~ Celebrations

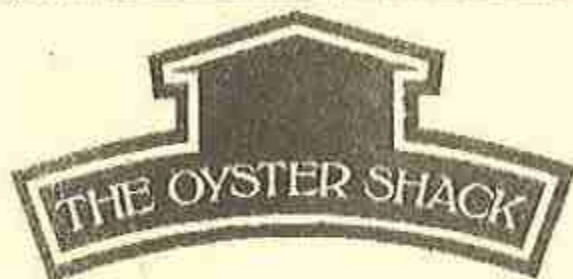
NEW 'The Voyage Spa' and Decléor Treatment Suite
Indoor Pool ~ Jet Spa Hydrotherapy Pool ~ Steam Room ~ Laconium ~ Sauna
Fitness Suite ~ Hair Salon ~ Outdoor Heated Pool ~ 9 Hole Golf Course
Tennis, Badminton & Squash Courts
Spa Days ~ Country Club and Spa Membership available
Exclusive Decléor Treatment Offers – see our website

New Refurbished Hair Salon Now Open

Discounts available for locals

Please see our website for seasonal offers

Thurlestone, Kingsbridge, South Devon, TQ7 3NN
Telephone: 01548 560382 Fax: 01548 561069 Email: enquiries@thurlestone.co.uk Website: www.thurlestone.co.uk



We are open 7 days a week 12 noon 'til 9pm
Booking is advisable
*Check out our website for all the
spring offers!*

**"SEAFOOD AT IT'S VERY BEST, CAUGHT LOCALLY, COOKED SIMPLY
AND SERVED FOR YOUR ENJOYMENT"**

**"Totally exceptional food and a brilliant
atmosphere"**

bigbury@oystershack.co.uk
www.oystershack.co.uk

01548 810876
twitter @theoystershack

Village News Round-Up

DAVE WALSH

A little bird tells us that Dave Walsh will celebrate his 90th birthday on 28th April. Born in Waterford, Dave was a renowned international footballer, winning 31 caps for Ireland 1946-53 and scoring twelve times. For West Bromwich Albion he scored 94 goals in 165 appearances, before moving to Aston Villa in 1950. In 108 matches for Villa he scored 37 goals. After seasons with Walsall and Worcester he retired as a player in 1957. He has been invited back to Aston Villa for a celebration of his birthday. Our best wishes and congratulations go with him.

HOSTESS TROLLEY

No sooner had the February *Village Voice* put out an appeal for a Hostess Trolley 'surplus to requirements' than an offer came in by telephone, which the Parish Hall was delighted to accept. Thanks go to Polly Petty for her generosity. The trolley has already been put to very good use for the *Village Voice* lunch held in February.

BIG YELLOW BRUNCH

On the 2nd March a *Big Yellow Brunch* was put on in Thurstons Church Meeting Room, in support of the Children's Liver Disease Foundation. Organised by Liz Robinson and Joan Booth the sumptuous breakfast was followed by a raffle, card and cake sales and guess the number of balloons the Telephone box Library could hold! The event raised over £1000 for the Foundation, which is another testament to the generosity of all who attended and to all those who contributed time, effort and donations to this very worthy cause.

LIZ & GRAHAM'S RUN

The London Marathon training is going well for Liz and Graham Clack, who are preparing hard for the great event. They would like to say how appreciative they are of all the people who have sponsored them so far in their effort to raise funds for Clic Sargent, particularly the mystery donor of a bottle containing a large sum of money. Sadly, they couldn't read the signature on the bottle so don't know who it was. (If you

were the donor, please contact them as they want to thank you personally. The phone number is 01548-560050). If anyone wishes to donate, please go to www.virginmoneygiving.com/lizclack

Their young grandson Samuel is now in his maintenance phase of treatment, which will last until August 2015. Liz and Graham say *"He has had a rather rough time of it but we are pleased to report that he is getting stronger and has even attended nursery school for a day. Hopefully there will not be any more major issues."*

NSPCC

The local branch of the NSPCC is holding a Jumble Sale on Saturday 13th April at the Parish Hall, from 2 pm until 4 pm and would welcome gifts of good quality, clean, items as well as cash donations. Please help to make this event a success for the sake of the many vulnerable children that this charity aids each year.

COMMANDO CHALLENGE

Readers will remember that Vida Alexander did the 'Commando Challenge' last October. Sad circumstances delayed her reporting back to you as her husband, Henry, died just before Christmas. She would now like to thank all her generous sponsors and in particular an ex-Royal Marine Commando now living in Thurstons. She raised just under £1000 which she donated to the Royal Marine Trust (20%) and Devon Air Ambulance (80%). Although she promised the family that she would not undertake any more such challenges, she is making one exception. 2014 is the 350th anniversary of the formation of the Royal Marines and the Trust have been given official permission to stage an historic Rock Run. Only 350 runners are allowed in this race - from the Dockyard in Gibraltar to the top of the Rock - and Vida has applied for a place! Vida says *"This will be a massive challenge for me as I have a fear of heights and don't really like running up hills. Hopefully I will manage to overcome my fears and help raise funds for the Royal Marines who have much bigger challenges...."* Vida needs to raise £1200

by the year end to guarantee a place and can be reached on 01548-561182 or you can catch her at the Parish Hall when she finishes her Wednesday Tai Chi class at noon.

QUARTET

A lot of parish residents saw the recent showing of this lovely film at the Reel Cinema in Kingsbridge, so they may be interested to know that it was shot at a privately-owned country property in Buckinghamshire, Hedsor House. This was once home in the 18th century to Augusta, Princess of Wales, mother to George III. It is still owned by the fourth generation of the Shephard family, and Nick Shephard the present incumbent says that it was given to his grandmother as a wedding present.

CONGRATULATIONS

Congratulations this issue go to Matt Dyer and Dan Kendrick, assistant green-keepers at Thurlestone Golf Club, for passing their Level 3 Diploma in Work Based Horticulture (Sport Turf Green Keeper). Both have been studying hard under the guidance of Course Manager, Vic Dyer. Matt was additionally commended for achieving the Top Apprentice in green-keeping for 2012!

TABLE TOP SALE

In aid of Kommandantsdrift Primary School, South Africa, there will be a Table Top sale at Malborough Hall on Sunday 14th April from noon until 4.00pm. Free parking, warm indoor browsing, children's corner, raffle and refreshments. Entry is free.

WELL WOMAN EXTRAVAGANZA

Also In support of Kommandantsdrift Primary School at Malborough Village Hall on Sunday 12th May there will be an afternoon of retail therapy, beauty and holistic treatments and well-being workshops, including Yoga, Zumba Gold, Shakti Yoga Dance, Nia, and Boot Camp. Entry £1.00. There will be refreshments and cream teas.

AUNE CONSERVATION ASSOCIATION

The Annual General Meeting of the ACA will be held at Bigbury Memorial Hall, St Ann's Chapel, at 7.00 pm on Tuesday 16th April. It will be followed by a talk *Improving the Avon* by Karensa Lawrie of the Westcountry Rivers Trust, about the work to improve the water quality of the Avon within the South Hams

Rivers Improvement Project, funded by DEFRA. Everyone is welcome, and tea and coffee will be served beforehand.

NIGHTRIDERS

Mick and Jane Howey of South Milton will be taking part in *Nightrider*, a cycling event, riding 100km through London on Saturday, 8th June. This will be in aid of *Motivation*, a charity which makes suitably adapted wheelchairs for accident and war victims in the third world. For further information, or to sponsor Mick and Jane, you can phone them on 01548 560600, or visit the website at www.motivation.org.uk.

STOP PRESS NEWS

It seems that local Thurlestone resident John Lavelle may have found a Bronze Age spearhead, similar to the one which was reported in the "Land of the Five Beaches" video and DVD. John made the find on Leasfoot Beach and is now seeking to have the spearhead dated and authenticated. Further details about this exciting discovery will be given in forthcoming issues of Village Voice.

ARTS & CRAFTS SHOW

Thurlestone Parish Hall

Saturday 25 May, 2.00 - 5.00 pm
Sunday 26 May, 10.00 am - 5.00 pm
Monday 27 May, 10.00 am - 4.00 pm

A wonderful display of the work of parishioners and friends... Artwork, needlework, flower arrangements and crafts of many kinds under one roof.

Tea, coffee, & cakes available

If you have items you are willing to exhibit (it is not a competition and so they will not be judged) please enter them. An entry form is enclosed in this issue of Village Voice, and there will be more forms available at the Post Office.

Cobblers !

Masters of Kingsbridge

The Anchor Centre

Tel: 01548 857 857

Key Cutting

Shoe Repairs

Pet Tags

Engraving

Watch Batteries

www.kingsbridge-cobbler.co.uk

Claire's Kitchen

'Cuisine with a flair'



Outside Caterers from

Salcombe/Kingsbridge

WEDDINGS, ANNIVERSARIES

CHRISTENINGS

CORPORATE FUNCTIONS

Or just a meal delivered to your door

**Hand made to order,
using fresh seasonal & regional produce**

TELEPHONE/FAX 01548 560191

Claire J. Wallace

Winkfield Place Cordon Bleu Diploma

E mail: claire@claires-kitchen.co.uk

Website: www.clares-kitchen.co.uk



ADRIAN

MUNDY

Independent Monumental

Masons

Memorials: Renovations:

Lettering: Name Plates

A Local Qualified

Craftsman

Competitive Prices

Tel/Fax: 01 548 856 340 or

Mobile/Shop 07721-666524

Unit 10, Garden Mill, Kingsbridge



A local independent
family business

SAVILL

FUNERAL SERVICES

Funeral Director Talbot Savill



The only Independent
Family Funeral Directors
in Kingsbridge

**PRE-PAYMENT
PLAN FUNERALS
ON REQUEST**

***A CARING, SYMPATHETIC
& 24 HR PERSONAL SERVICE***

Tel: Kingsbridge 01548 857701

PRIVATE CHAPELS OF REST

The Moorland, Lower Union Road,
Kingsbridge TQ7 1EF



TIMBER-JACK



A.J. Rhymes

4 Island View Thurlestone Kingsbridge TQ7 3NH

Tel:

01548 560 584

e-mail: timberjack@hotmail.co.uk

Mobile:

07866 898 307

Tree Services

All aspects of tree surgery from pruning to the removal of dead, dying, and dangerous trees

Stump grinding Replanting Woodland maintenance

Advice on all tree matters and legal constraints

All our work is carried out by fully trained and insured staff

Fencing

We are able to design and build any style of fence to your personal requirements, using the highest quality locally sourced and sawn timber

Working today for tomorrow's countryside

POWER-WASH



PATIOS & DRIVEWAYS NO JOB 2 BIG

**All Pressure Washing work
undertaken**

FASCIAS ~ GUTTERS ~ CONSERVATORIES

Covering the South Hams
and surrounding area

For **FREE** estimates call Sean

07794729383

after 6pm

01548 531636

GET SET FOR SUMMER



Lisa Davis

STUDIO FLOWERS

For All your Floristry Designs

Weddings & Funerals

Birthdays & Thank yous

Anniversaries & Engagements

Parties etc

Deliveries throughout the South Hams

Tel: 07855 321759

Or 01548 854546

Unit 2n, South Hams
Business Park,
Churchstow
TQ7 3QH



Best Kept Village In Devon Competition

Thurlestone, through its Parish of Thurlestone Society has applied to enter this 2013 competition, and so from May to July we will be open to the judges' scrutiny.

The Campaign to Protect Rural England runs this event nationally and in their Devon branch report on 2012, Diana Moyse, Devon organiser, says of the entrants:

"They represent communities which are well cared for; where people are taking a pride in their surroundings; where active residents, community associations and Parish Councils are giving a lead in making these villages attractive, enjoyable and caring communities in which to live - conserving old buildings, fostering appropriate new developments, maintaining footpaths, providing amenities and facilities for all ages and showing initiative in the care of the environment....."

We were awarded 'gold' in the large village category in 2010 and last year 'silver', so this time let's see if we can get a repeat of 2010. It's up to all of us! So that we can all be aware of the points that judges are looking out for, the following table lists the ten categories - each carrying 10% of the marks - on which the village is assessed. You will readily find areas where you can personally make your contribution to the collective efforts of the village.

Best Kept Village In Devon Competition

How the Judges allocate points

1. General tidiness. Absence of litter and unsightly refuse on dumps and verges
2. Private buildings. Condition of houses, gardens and allotments, including hedges, walls, fences and outhouses.
3. Public buildings. Condition and cleanliness of public halls, sports pavilions, and sheds, bus shelters, telephone kiosks, public toilets and notice boards.
4. Public open spaces. Condition of village greens, playing fields, school yards, public seats and car parks.
5. The village environment. State of footpaths, stiles, field gates, signposting, ponds and streams.
6. Condition of churchyards, cemeteries, and war memorials.
7. Commercial and business premises. Condition of hotels, B&Bs, restaurants, private sports clubs, etc, including advertising and signage.
8. Initiative in the care and enhancement of village amenities. Composting, recycling, public planters, beds and gardens, public woodlands and other schemes. Facilities or initiatives for children, young people, the elderly etc.
9. Evidence of good village communications. Quality of hand-drawn village map with all features to be judged clearly marked. Notice boards, easy to read, up to date, plentiful contents. B&V posters displayed. Quality of village website and village magazine information.
10. Evidence of community spirit.

*All
Saints*

PRIEST-IN-CHARGE: Revd Phil Osler
The Rectory, Homefield, Thurlestone TQ7 3LF
(01548) 560967

LAY READER: Peter Gornall

From the Rectory



Dear Friends,

I, along with many others, have thoroughly enjoyed watching the series 'Call the Midwife'. Although on the surface it was nostalgia for a lost age, it dealt also with some pretty gritty issues that faced people. Underpinning the work of the midwives was the rhythm of the life of a house of prayer, people who lived among the folk they served and knew them and also upheld them in prayer.

Looking back at the 30 years Janet and I spent in a Kentish village it is easy to see how the life of local communities has changed in a relatively short space of time. When we first moved there we had doctors and dentists who didn't just work in the village but lived their whole lives in the community they served. Some of the teachers from the village school also lived within the community and the headmaster lived in the school house. People mixed together and local societies flourished.

Things are different today in that village and in many communities. The figures who lived and worked in our midst now live their public and private lives in different towns. Many people live their community life on-line often rarely interacting with many friends face-to-face. Societies of all sorts find it difficult to flourish and attract members. Mobility, technology and the need to be constantly travelling to visit widely dispersed family and friends all take their toll on local communities. Most villages no longer have their own Vicar, as a part-timer I have four parishes and Pam Kemp in Start Bay has eight - it is very difficult to be an effective part of so many communities.

Given all these pressures it is always good to see communities, such as those in Thurlestone, Buckland, Bantham and our other Benefice villages, where people still tend to look out for one-another and offer help and support. It is one of the ways in which we live out Christ's command to love one's neighbour as oneself. To assist with this the church has a group of area contacts throughout the parish who let me or one of the pastoral ministers know if there is someone who would like a visit or is ill or in hospital. In addition you would be very welcome to join in any of the activities in the church meeting room and lifts can be arranged. Set within our community is also a house of prayer with a rhythm of daily and Sunday worship upholding in prayer.

Change is inevitable. We have much to give thanks for our way of life but we also have to live in the world as it is - so maybe I will go on Facebook and Twitter, it might be the only way to keep in touch with my children. Nostalgia is great, but not nearly as good as it used to be!

Phil



All Saints' Diary

Churchwardens: Liz Webb 560090 & Graham Worrall 562016

Everyone is welcome at all services,
which are at Thurlestone, unless indicated otherwise

Church Services

Sundays

EVERY SUNDAY

APRIL 7TH, MAY 12TH
APRIL 7TH

APRIL 14TH

APRIL 21ST

APRIL 28TH

MAY 5TH

WHIT SUNDAY/PENTECOST MAY 19TH 11.10am Pentecost Eucharist (CW)

TRINITY SUNDAY MAY 26TH 11.10am Trinity Sunday Service

8.00am Holy Communion (BCP: 1st, 3rd; CW: 2nd, 4th)

11.10am Parish Eucharist (CW) (Fairtrade Stall)

6.00pm Benefice Evensong at Churchstow

11.10am Morning Worship

11.10am Family Communion (CW) with Baptism

6.00pm Benefice Praise Service at West Alvington

11.10am Matins (BCP)

11.00am Benefice Rogation Service (see below)

Weekdays

THURSDAY APRIL 4TH, MAY 2ND

ASCENSION DAY THURSDAY MAY 9TH

EVERY WED, THURS, FRI & SAT

EVERY WEDNESDAY except 1st in month

10.00am Holy Communion (BCP) (said) at Bantham

6.00pm Benefice Eucharist (CW) at Thurlestone

8.30am Morning Prayer (said)

10.00am Holy Communion (said) (alternating BCP/CW)

CW = Common Worship (modern language) BCP = Book of Common Prayer (traditional language)

Everyone is welcome to the Rogation Sunday Service with Optional Lunch

SUNDAY MAY 5TH 11.00 A.M. SHUTE FARM, SOUTH MILTON

(From Thurlestone take left fork just before South Milton church & continue to end of lane;

From South Milton village turn sharp right after the church & continue to end of lane)

Everyone is welcome to join the optional "Bring & Share" Lunch after the service

but you are equally welcome to the service and not to stay for lunch!

Parking ~ Tea/coffee/soft drinks provided ~ Wear warm & waterproof clothing

IF REALLY WET, THE SERVICE MAY BE IN CHURCH (Check with Liz or Graham!)



You would be welcome to join us for **Activities in the Church Meeting Room**

Films for
All
TUESDAYS
2.30 p.m.

APRIL 2ND
We bought a Zoo
Scarlett Johansson, Matt Damon,
Thomas Haden Church



MAY 7TH
Salmon Fishing in the Yemen
Ewan McGregor, Emily Blunt,
Amy Waked

Donations to Hearing Dogs & Church funds ~ Leaflets in Church, Meeting Room &

EVERY WEDS. & 1ST MON. 10.30am Coffee-Time in aid of monthly charity

THURSDAYS (term time) **9.00am** Under 3s Contact: 560843

FRIDAYS 12.30pm Lunch Club for those living alone - Book on 560090

Please use **CHURCH CAR PARK** when attending church or meeting room

Calling all photographers!!

We need your photographs of the
Thurlestone, Buckland & Bantham Area for a

Photographic Competition

to choose photos for a

2014 Calendar



40p/entry to cover costs of printing

Entry forms available from:

Back of Thurlestone Church, Church Meeting Room,
Bantham/Thurlestone Shop or Liz Webb (560090)

Entries must be received by April 15th

We then need **YOU** to come and help choose the
winning photos at a

Photographic Exhibition

MAY 25TH - 29TH

in the Church Meeting Room

CREAM TEAS:

**Saturday, Sunday
& Monday**

3.00 - 5.00 p.m.

COFFEE-TIME:

Wednesday

10.30 a.m.

-12 noon

REMEMBER: (1) *Enter your photos*

(2) *Come and vote for photos for the calendar*

(3) *Buy the calendar!! - on sale from July 20th*

60% off the 2013 Calendar

with 75% of the year still to go!!

Now only £2 from local shops, church & Meeting Room

EDDIE CAMERON

FORESTRY

**Contractor, Instructor,
Assessor celebrating 25 Years
of contracting & training in
South Devon**

**Tree care. Hedge Laying.
Fencing.**

**Small Woodland Management
Woodland establishment,
maintenance and felling**

Tel: 01548 854480

Mob: 07977 906401

**KINGSBRIDGE
HIRE CENTRE LTD**
HIRE - SALES - SERVICING



COLINTON

STIHL

HONDA

HAYTER
THATCHING & FENCING

BOSCH
Invented for life

WE ALSO STOCK A WIDE RANGE OF
TOOLS AND EQUIPMENT FOR HIRE

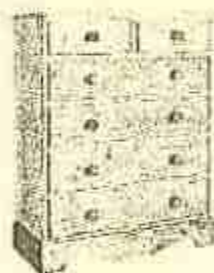
01548 853679

OLD STATION YARD, KINGSBRIDGE, DEVON, TQ71ES
INFO@KINGSBRIDGEHIRE.COM

KINGSBRIDGE PINE

4 Ebrington Street
KINGSBRIDGE TQ7 1DE

**5 ROOMS OF QUALITY
FURNITURE**



- * Hand Finished Pine
- * Contemporary Oak
- * Painted Furniture
- * Lamps, Mirrors, Pictures



Tel/Fax 01548 856002

FREE LOCAL DELIVERY

Open Mon/Tues/Thurs/Fri 9am to 5pm Wed/Sat 9am to 1pm

THE GRATE REVIVAL LTD

bringing 25 years of experience to the South Hams

**FIREPLACES – STOVES – LIGHTING – MIRRORS
FIREPLACE ACCESSORIES**

For all your fireplace needs....from a basic poker to the
grandest bespoke chimney piece.

**YOU ARE WELCOME TO CALL INTO OUR SHOW ROOM
TO DISCUSS YOUR REQUIREMENTS AND VIEW OUR
EXTENSIVE RANGE OF PRODUCTS ON DISPLAY**

UNIT 1C South Hams Business Park, Churchstow, Kingsbridge TQ7 3QH
Tel : 01548 853918 e-mail : graterevival@btconnect.com

Toad Hall[®]

C O T T A G E S

Looking to let your property?

We are the leading provider of holiday accommodation in Thurlestone.

With nearly 25 years experience in providing quality cottages with a
service to match we are the local holiday cottage agency
with a national reputation.

For more information and a copy of our owner pack call:

01548 853089

www.toadhallcottages.co.uk

THURLESTONE GOLF CLUB



CAPTAIN'S NEWSLETTER

In my New Year's message I spoke of the changes that had happened to make the Club more accessible, more run like a business, and more involved in the local community. I described the Club House as an accessible community asset and made mention of the growth of the Junior Tennis and Golf Academy. I am pleased to report progress with each of these initiatives.

Those of you walking past the Club House towards the beach and cliff top walks will observe the tidying up of the entrance and improved signage on and off the Course. This has as much to do with Health and Safety as it does with "keeping up with appearances". Right here in the South Hams we have Thurlestone golf course ranked in this country's top 100.

Those of you with an eye for detail will have noticed our greenkeepers have uncovered the long neglected building next to the public conveniences outside the Club House. This old building has fallen into disuse and probably has walls that could tell a tale or two. In years gone by this building was the changing room for the Artisans section. We have plans for that building, more on that another day.

Who or what is an "Artisan" I hear non-golfing readers ask? Historically, many British golf clubs had small artisan sections, drawn from the working classes who had limited playing rights, could not enter the clubhouse, had no vote on the management of the club, played in separate competitions from the main membership and had to perform unpaid maintenance of the course in return for very cheap subscriptions. Some earned shillings as caddies to the better-off members, titled ladies and gentlemen and Royal Princes who became Kings.

Within the Club House there are changes underway. Some of our IT dated back to 1995 and was unable to handle new

software and systems updates. New IT means we can eliminate some of the inefficiencies and frustrations for staff who operate systems handling membership renewals and accounts. The on-line tee booking system went live on 1st March. Social membership is available to non-golfers who wish to use the Club House for casual dining and private functions for family and friends.

On the course there are some commendable achievements to report. The greenkeepers have kept the course open in the most adverse of weather conditions. We are lucky to have a fast draining landscape. Last month we hosted the British and International Greenkeepers Association who played the course on a day many others in the area were closed. The new greenkeepers' shed was the envy of many who visited the facility before dinner.

The Golf Academy is up and running and currently full. Another Saturday morning class has been added to meet demand in the community for Junior golf. The Club is providing structured tuition as part of the junior teaching programme required by Golf England.

On a windy Sunday morning in March the Ladies challenged the Men in a 4 ball competition. This is part of the "fun" side of golf at Thurlestone, alongside the matches that see us competing in the Devon leagues, national events such as the Daily Mail Foursomes, and friendlies against local adversaries like Bigbury and Churston. Back to the Ladies v Men match which saw the Ladies trying to regain the Wooden Spoon. It is a proper top shelf kind of giant Wooden Spoon, sitting as it does over the bar having gathered dust since it was last played for in 2010. Alas the Men prevailed to hold on to the Wooden Spoon for another year. Some local names, known within the communities of Thurlestone, Buckland and Bantham, took home winners prizes. **Sue Esplin and Gill Hicks'** score of 43 points was matched by **Steve Pepperell and Simon Davey**.

Starting in April we have a nine hole Pro Roll Up open to everyone. Every Friday for six months, the Golf Professional will be hosting

9 holes of golf and a meal in the evening to bring players together; families and friends are invited to turn up to eat, drink and see prizes awarded.

Also in April we have a "1st". On April 14th the Club is hosting a Mixed Invitation Day for members and their guests. If you are a non-member wishing to play the course then talk to the Club's Office who will grab a member for you to play with on the day.

We have a Thurlestone Festival Week from July 1st - 7th featuring a Pro Am, an Invitation Day, a Mixed Open and a Community Day. The Community Day has "cheap as chips" green fees for locals who are not members. Members' guests can play for a green fee of £1 for each post code mile they live away from the Club. This is to encourage locals to try golf at Thurlestone. The Club is changing!

In August we have a "Greenkeepers Revenge". This gets the greenkeepers involved in playing and setting devilish pin positions for members; it is their opportunity to say "gotcha" and is our way of saying thanks to them.

Some of the best golfers in the South West will be at Thurlestone in 2013 as we are due to host a Professional Golfers Day in June and the Palaret finals which return to Thurlestone in August after a gap of several years.

Mervyn Spencer

LADY CAPTAIN'S NEWSLETTER

So far the weather hasn't done anything for our golf, that's if you are mad enough to want to play! Just as well I had put plenty of 'fun' 11 hole competitions in the diary to start the year off.

The first ladies competition for 2013 was on Wednesday 9th January, and was a Fielder's choice 11, 14 or 18 hole competition depending on how much of the cold and windy conditions you could stand. The winner was **Lesley Robinson** with 27 points from **Wendy Laud** with 26 points.

The second competition on 16th January was a Greensome competition. No trolleys were

allowed but the weather was dry. The winners with 21 pts on countback were **Lesley Robinson** and **Lindsey Fletcher**, from **Victoria Gibbens** and **Inger Reeve**. In third place with 20 pts were **Wendy Laud** and **Linda Cant**.

January also saw the final of the Winter Foursomes refereed by myself. In a very tight match **Wendy Laud** and **Sally Rossiter** beat **Lesley Robinson** and **Victoria Gibbens** 2/1 on one of the coldest days in the winter.

Unfortunately the January Stableford competition had to be cancelled due to heavy rain. The last ladies competition in January was a team event with four clubs and a putter. The winners were **Victoria Gibbens**, **Jane Mason** and **Val Lovatt** with 25 points from **Gill Durden**, **Roberta Price** and **Anne Seymour** with 22 points.

The winners of our Dally Mail Foursomes qualifier were **Lesley Robinson** and **Anne Seymour** and they went on to Teignmouth to represent the Club in the first round of this knock out competition. It was a very tight match but unfortunately our team lost on the nineteenth.

In the Mail on Sunday competition, we had a very close match against Wrangaton away. We were all square with two and a half matches each so we had a sudden death play off on the 19th hole which unfortunately we lost. My congratulations go to the team captained by **Lesley Robinson** together with **Liz Sharman**, **Barbara Smith**, **Victoria Gibbens** and **myself** who fought very hard on a difficult course.

In February we had a Yellow Ball competition over 11 holes in teams of three with double points scored when the yellow ball was used. The day was dry and sunny but with a very cold wind and fortunately trolleys were allowed. The winners were **Barbara Smith**, **Val Palmer** and **Pat Townsend** with 56 points from **Angela Ford**, **Linda Cant** and **Val Lovatt** with 53 points.

Also in February we had the final of the Murray Smith knockout trophy which was won by **Wendy Laud** by 6/4 against **Jill Beavis**. Again it was bitterly cold and **Pam St Leger** had the unenviable job of refereeing it, and was wrapped up in her ski gear to keep warm.

On Wednesday 21st February we had a Stableford competition and the winner in Division one was **Laura Tregelles** with 39 points from **Jenny Roberts** with 34 points. Division two went to **Pam St Leger** with 31 points from **Val Lovatt** with 30 points. Division three went to **Mary Wilkes** with 22 points from **DI Baker**.

The mixed night golf competition had to be cancelled due to bad weather but the Men verses the Ladies for the Wooden Spoon trophy (which hadn't been played since 2010) went ahead early in March. Unfortunately the men beat the ladies 6 games to 3 on what was a very cold windy day but we had a very warm atmosphere for the meal and presentation afterwards.

I am looking forward to some warmer weather when I next write my newsletter and some of our friendly matches will have been played. The new booking system for tee times started on the 1st of March and you can book online or by telephone. If you have any problems, **Steve White** our Professional and his team are always available to help you.

We have a coffee morning and Open golf day in April and a Fashion show in May to look forward to. I hope many ladies will make cakes and preserves for the "bring and buy sale" at the coffee morning.

Linda Cant

JUNIOR SECTION NEWSLETTER

January and February have been very cold and windy but the two junior competitions went ahead. Luckily both days were sunny and the juniors returned some good scores. In January, it was a Stableford Competition on a dry day. The results for the CONGU handicap competition were 1st **Laurence Partridge** 33 points and 2nd **George Holland** 29 points. There was also a non-CONGU handicap competition and 1st was **Ethan Mulligan** with 31 points.

In February the junior stableford had 7 CONGU handicap juniors and 5 non-CONGU juniors, the conditions were good but cold, and the scores were excellent with two handicap reductions. The winner of the CONGU competition was **James Earl** with

39 points, from **George Holland** with 34 points and **Ben Earl** with 34 points. **Ben Tregelles** and **Fin Whealan** won the non-CONGU section off the blue tees with 22 points. **Ben Woods** won the non-CONGU off the red tees with 40 points and had a handicap reduction. The junior handicaps are now on the website in the junior section.

George Holland had a great time at St Mellion in February. He played in the second group out for Devon and Cornwall U14 versus Surrey. George who has a 12 handicap and a 10 handicap boy from Cornwall went one down on the 5th and it remained that way or all square until the 17th when they birdied the last two to win 1 up. In doing so they beat two older boys; one off 8 handicap and Surrey's best player who was a 4 handicap. Devon and Cornwall lost 2-1 to Surrey but one Devon and Cornwall group missed a short putt on the 18 to halve their match so it was not as one sided as it appeared it was going to be, as all of Surrey's under 14 squad were between 4 and 8 handicap.

The "Thurlestone Junior Academy" run by **Pete Mitchell** and **Steve White** has just completed the second phase of lessons for the 28 academy members. The focus has been to get the juniors playing the course, using the skills that they have been learning since the academy started in November. There has been some outstanding play on the course, with **Finn Whelan** winning the medal for the "Academy Member of the Month". This was much due to Finn's stunning tee shot on the first hole hitting his driver to 8 feet from the flag!!

Thurlestone Golf Club has rewarded all the students of the Thurlestone Junior Academy who have completed their second set of 6 lessons with an offer of 50% off their junior membership. This is a very generous offer from the golf club, showing the commitment that Thurlestone Golf Club has in the development of junior golfers in the local area.

Once having become members, the students will be able to attend the Junior Club Night on a Monday, when the Junior Committee organise different matches and activities to encourage students to get their handicaps.

We have also had a very generous offer from GrapevineIT, a local business in Kingsbridge, to sponsor the Academy. The money they have sponsored will be put towards the

purchase of some 'Thurlestone Junior Golf Academy' caps.

Pete Mitchell, PGA Professional, who teaches the juniors will be visiting the local primary schools to give FREE taster sessions to the pupils this Spring. If you would like any information about the Academy or golf lessons then please ring Pete or Steve on 01548 560715.

The junior club evenings will be starting on Monday the 8th April and **Pete Mitchell** and **Steve White** will be attending when they can to play a few holes with the juniors. The CONGU handicap juniors will be organised into matchplay groups by the junior Captain **Rob Came** and junior organisers **Steve Pepperrell, Janet Richardson and Stuart Tollins**. The non-congu juniors will go out on the course with an adult to play 6 or 9 holes. All juniors are welcome and if

you would like to come along to any free taster sessions please contact **Pete Mitchell** at the Pro shop.

The club has entered the West Devon Junior League again this year. Last year we were runners up to Wrangaton in the final. This year we have to play both home and away matches against Staddon, Wrangaton and Yelverton golf clubs and I would like to wish the team good luck for the season. We have also entered the Tamar Cup knockout where we play Cornwall clubs. The other knockout competition is the Devon County Junior Golf, Basil Steer knockout where we play Fingle Glen at Torquay in the first round.

The new Thurlestone golf club website is now running with tee time bookings and all the competition results. You can book your tee off time on-line.

Liz Line

Alvington Singers

With Divertimento Orchestra
Conductor: Alastair Durden

Fauré's Requiem *and Psalms set by John Rutter*

**Saturday 4th May 2013
at 7.30 pm**

**St Michael & All Angels
Church, Stokenham**

Tickets £12 : from Wordwise,
Kingsbridge Information Centre,
Anne Dooley 01548 531252
Michael Sturdee 01548 852735
choir members or at the door

www.alvingtonsingers.org.uk Reg.Charity no.XT20088

**Thurlestone & South Milton
Horticultural Show**

ANNUAL PLANT SALE

**Saturday 11th May
10.00 am - noon
Thurlestone Parish Hall**

*Don't miss out
on this great opportunity
to purchase top-quality stock
at bargain prices - but come early
to avoid disappointment.*

Tea and coffee available

NEWSPAPER DELIVERIES

Enjoy the luxury of daily deliveries
-whether you are a permanent
resident or on holiday

Dave & Sandra offer an honest,
early and reliable service

You can start tomorrow!

****Just call 01548 853132****

Magazines delivered free

No need to get the car out -use our
petrol and let us get wet!

Dave & Sandra Edmunds, 22 Hemacre
Road, Kingsbridge, TQ7 1DN



Make life easier!

Let us cut your grass

Contact Ian Mason

Tel: Home 01 548 581777

Mob: 07974 987433

We Just Cut Grass

CARPET & UPHOLSTERY CLEANING

*Professional deep cleaning and drying
of carpets and all soft furnishings*

- Stain Removal • Leather Cleaning
- Curtains dry cleaned *in situ*
- Anti moth and flea treatments
- Hard floors cleaned and polished
- Carpet refitting
- Carpet re tufting (e.g. burn marks)

www.121serviceclean.co.uk

1-2-1 SERVICECLEAN

01548 562562

Mobile : 0797 121 2720

Established 1987 Prop: Steve Woodcock
National Carpet Cleaners Association, member No. 57

For Your Eyes Only

- Fabulous Specs -
- Gorgeous sunglasses -
- Clinical Excellence -
- Contact Lenses -

Charlotte Huxter F.B.D.O.

79 Fore Street, Kingsbridge TQ7 1AB
Tel: 01548 852636

www.devoneyes.co.uk
E-mail: devoneyes@btconnect.com

NHS & Private Patients welcome



A.J. Gibbons



Incorporating Colins Fuels, Totnes
Coal Merchant

Chimney sweeping service now available

Delivery service within 25 mile radius.

Deliveries to Torbay every Wednesday and Friday

Solid fuel, bottled gas, logs, fire sticks & charcoal etc.

Open 6 days a week

Cash and Carry Depot

New premises at:

2 Riverside Units, Bluewaters Industrial Estate,
Pottery Road, Bovey Tracey

Tel: 01626 834449

Maintenance Property Services

ANY GENERAL REPAIRS:

From- Roof Tiles to Bathroom Tiles

- Painting a Ceiling
to Painting a House
- Changing a door
knob to hanging a
picture/mirror



Please call Ian 01548 581777

Mob 07974 987433

The Magic Mushrooms of Kapadokya (Cappadocia)

Magic Mushrooms, Fairy Chimneys, call them what you will but that is what you go to see in Turkish Kapadokya.

It all started with a flyer that dropped out of the Week magazine. Normally it would have been binned immediately, but £199 for 8 days including flights and hotel caught my scroogistic eye. So we set off in mid-February with no high expectations.

Landing in Antalya at around midnight we were taken to a surprisingly good hotel. We were part of a group of 37 who would have to put up with us for the next 7 days, together with Gengis the driver of a brand new coach and Ogus, pronounced Oz "as in Wizard of", the guide, who spoke an interesting version of the English language.

First stop Aspendos where, after an excellent lunch of fresh river trout, we visited a Roman amphitheatre. Very well preserved and refurbished, it seated an audience of 15000. Historians reckon amphitheatres were built to accommodate 10% of the local population so Aspendos would have had 150,000 inhabitants. It is still used for concerts in the summertime.

Next day, early start, we journeyed some 350 miles over a 6000ft snow-covered pass in the Taurus mountains. Several technical pit stops on the way but had an interesting interlude in Konya where we visited the Mevlana Caledin Rumi museum. Mevlana, a 13th century philosopher with a large following, preached complete tolerance and an undogmatic creed of peoples and religions. His cult also embraces the Whirling Dervishes.

We arrived at our hotel in Urgup in time for supper. It was dark, so we had no idea of the scenery until the next morning when we were greeted with spectacular views over the Kapadokya plains to the snowy mountains in the distance, with a group of multi-coloured hot air balloons serenely floating in the dawn sun. Off to the Goreme National Park for our first taste of the remarkable eerie terrain and topography. Groups of pinnacles of volcanic

rock topped with basalt hats like giant mushrooms stretching up to well over 50ft, formed by erosion through the millennia. Known as Fairy Chimneys they are an incredible sight and although we saw hundreds of them before we left Kapadokya we never failed to be amazed.

The Chimneys, hills and canyons were full of caves which have been hewn out of the soft volcanic rock. Some date back as far as 3,000BC and have been lived in, used as animal shelters or crop storage since those times. Many are still in service with modern double glazed windows, doors, electricity and carpeted throughout. We visited one, owned by a friend of Ogus, very comfortable having the advantage of a year-round near constant temperature. He is the first and only genuine troglodyte we have known.

Cave "cities" abound, some as deep as 5 stories, which were inhabited by groups of families. Water wells at the very bottom made it possible for the inhabitants to shut themselves away if besieged by their enemies, in particular Christian groups being persecuted by the Romans. There were many long tunnels to hidden entrances allowing escape. Christians have fashioned over 400 elaborate churches in the caves, painting them with frescoes depicting the life of Christ and Saints, many still in excellent condition. We visited numerous caves but found one cave looks pretty much like the next so after a while became caved-out (or even caved-in?) not to mention stiff backs from constant bending.

We were taken to watch a show of Whirling Dervishes and although put on for tourists we had a glimpse of the devout symbolism of the "priests" as they twirled in their long white skirts under the direction and prayers of their Quran following their mystical journeys. They then returned to their cells for meditation, whilst we came out to find snow on the coach and back to the hotel for a stiff double raki!

The next couple of days were more of the same only different, including one stop with

"lucky" trees from which hung hundreds of blue glass eye charms glinting in the sun, with flocks of pigeons and starlings encouraged by local stall holders throwing handfuls of crumbs to attract gullible tourists in turn. Back to the coast through impressive snow covered mountains even passing a petrol station strangely decorated with a giant giraffe and camel.

We visited several Mosques, one recently built had a huge carpet with stripes across it to keep the faithful in orderly lines. At the back was a digital clock with five times - sunrise and four corresponding obligatory prayer times. Women, who had to wear head coverings, were not allowed in the main chamber but had to go to a type of side chapel (let alone not being bishops!). Shoes off and we were told that the faithful had to wash hands, feet and heads before prayers which explained the long troughs with taps in all the public loos.

We were herded to carpet, jewel and leather warehouses which we could have done

without although some of our group bought carpets. We were also taken to a touristy Turkish and Belly dance evening which had plenty of audience participation so, despite the rather tatty performance, was nevertheless good fun.

Food was mainly repetitive Turkish Mezze, a couple of excellent meals but a couple in what I can only describe as tourist eating factories which were definitely so so. Yogurt and honey were our favourites and the last breakfast included a huge platter of real honeycomb. Our last day was mainly spent exploring the lovely old port area of Antalya, with a very pleasant hour having a beer overlooking the harbour with its bustling fishing boats and elegant wooden gulet boats taking tourists for a trip around the bay.

All in all an enjoyable trip, certainly we had our money's worth, and of course we came back laden with boxes of Turkish Delight!

Kit and Gillian Marshall

Thurlestone Phone Box

At the end of February we were delighted to receive our second Defibrillator. This was handed over at the Sloop Inn, Bantham followed by a training session attended by some 25 locals, who were amazed at how simple the device is to operate. It is now installed in the Resident's entrance which is 15 metres down the pathway running down the side of the Sloop. It is well signed and open 24/7.

The other Defibrillator is in the Thurlestone Hotel Garage on the left hand side. We would urge everyone to familiarise themselves with their nearest location as time is certainly of the essence if these life-savers are ever needed. Thanks again to everyone involved in raising the fantastic sum of £3000 and in particular the Kingsbridge Estuary Rotary Club for helping collect the donations and reclaiming the tax.

Winter storms have certainly had their effect on the beaches this year. Sand disappearing, then reappearing changing the contours but also bringing in plenty of unwanted flotsam and jetsam. Our beach cleaning team did a grand job clearing the worst of the debris before the half-term holidays and again thanks are due to locals who pitched in to help and to Thurlestone Golf Club for arranging for it to be carted away and offering tea to the helpers.

We can reveal that the number of yellow and blue balloons which filled the phone box as part of the Big Yellow Brunch fund-raiser was 87. As scrumptious brunches go it was certainly a winner and Thurlestone saw many a belt being let out a notch or two that day. Let's have some more, please! And a Happy Easter to everyone.





Learn to play
— **BRIDGE** —
By the Acol system

Beginners' and Improvers'
classes in Thurlestone

These daytime classes cover
bidding and play, and are given
by an experienced teacher.

Enquiries to **Jenny Underhill**

01 548 560368



ROSE PATERSON SOFT FURNISHINGS

Quality Handsewn Curtains
Poles and Tracks
Loose Covers
Blinds

Free Quotes
A Complete Service

Tel: 01548 856324



FLEAR HOUSE INTERIORS

Come and visit our large showroom
where in a relaxed atmosphere
you can browse through our vast selection
of exciting fabrics suitable for
Curtains, upholstery and blinds
Curtain poles and tracks
Wallpapers and trimmings
Blinds and upholstery

Tel: 01548 - 856660

Fax: 01548 - 852022



Old Station Yard,
Kingsbridge,
Devon, TQ7 1ES

Est 1994



The Dog Walking

Co.

The Reliable
Daily Dog Walking
Service

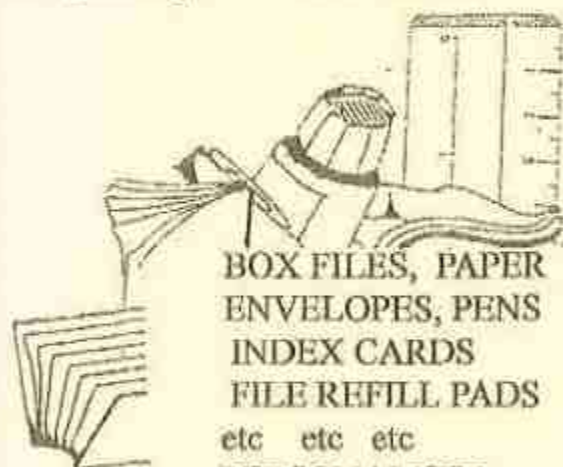
For more information,
call Louise, on
01548 521 460
or 07504 825593
Fully insured

www.thedogwalkingco.co.uk
Come Rain or Shine

**KINGSBRIDGE
STATIONERS**

95 Fore Street
Kingsbridge

Tel: 856778



BOX FILES, PAPER
ENVELOPES, PENS
INDEX CARDS
FILE REFILL PADS
etc etc etc
PERSONALISED
STATIONERY
RUBBER STAMPS

Don't forget our photocopying —
and FAX Service !!
Call in and see us today

**IAIN and ROSIE'S
CREATIVE GARDENING
SERVICES**



**GARDEN
RENOVATION
MAINTENANCE
HEDGE CUTTING
PLANTING**

*Professional pruning of Roses,
Fruit trees and other Shrubs*

**RELIABLE
HUSBAND
AND WIFE
TEAM**



*Either available as individuals or
as a team*

CALL 852676 or 07970 788665



Extensions # Renovations # Conversions # Alterations

**DECKING ROOFING
PATIOS DECORATIONS GARAGES
UPVC WINDOWS DOORS & FASCIAS**

Why not let us give you an estimate?

**10 SEAVIEW ROAD, THURLESTONE TQ7 3TH
TEL: 01548 560521 MOB: 07703322519**

Virtuoso Musicians in Concert

TRIPLE WHAMMY 2

Tim Abel (piano)
Philip Handy (cello)
Rhys Matthews (percussion)

*Another evening of classical and modern music
specially created for Thurlestone
by three of UK's leading young instrumentalists*

Thurlestone Parish Hall
Saturday 27th April at 7.30 pm
(Wine Bar)

Tickets £10

Pat Macdonald (560436)

Lisa White (560505)



Tim Abel

From 2008-2010 Tim was Junior Fellow in Accompaniment at the RNCM, and has performed at many venues throughout the UK including Wigmore Hall, The Purcell Room and Bridgewater Hall, achieving critical acclaim

as a Park Lane Artist in 2010. After two years as resident pianist on Cunard Liner Queen Mary 2, Tim returns for his fourth performance at Thurlestone.



Philip Handy

Since graduating from the RNCM Philip studied at the Royal College of Music, London, and the Birmingham Conservatoire, winning the Strings Prize, and Rollason Award, and went on to take second prize in the Delius Competition and

win the coveted Symphony Hall Recital Prize in 2010. Philip has recently released his first CD "The Romantic Cello" with VIF Records.



Rhys Matthews

Rhys Matthews graduated from the Royal Northern College of Music, Manchester with a First-Class Honours degree in Music in 2009, and a Masters in Music (Distinction) in January 2011. Since studying at the RNCM, Rhys has taken part in master classes given by leaders in percussion performance. Rhys has enjoyed many tours abroad and continues to take an active role in solo performance. Awards have included the Gwent Young Musician of the Year 2005, the Gilbert & Webster Prize 2008 for Percussion Performance from the RNCM, the prestigious John Fussell Award for a young artist as part of the Swansea

International Festival, and achieving his Licentiate of the Royal Schools of Music (LRSM). Having given us a stunning performance here last March Rhys returns for a second concert in Thurlestone.

Kate's Kitchen



With Spring in the offing, here are two light, easily-prepared dishes which are a total change from winter's heavier casseroles and puddings... and quite delicious!

HONEY ROAST MUSTARD SALMON (Serves 2)

2 salmon steaks (skin off)
Salt & freshly ground black pepper
Wholegrain mustard 2 level teaspoonsful
Balsamic vinegar 2 teaspoonsful
Clear honey 2 level teaspoonsful

- # Pre-heat the oven to 200°C
- # Wash and pat dry the salmon, season and place on a baking tray which is lined with greaseproof paper.
- # In a small bowl, mix the mustard, vinegar and honey well then spread it thickly over the salmon.
- # Bake for 10 minutes or until the salmon is cooked through.

Washed but unpeeled baby potatoes, quartered, can be done at the same time if put into a preheated baking dish containing a little oil. Put in the oven 10 minutes ahead of the salmon. Both dishes are then ready at the same time.

And for dessert.....

RUBY FRUITS WITH WHITE CHOCOLATE SAUCE (Serves 2)

Mixed frozen berries - about 225g (8ozs)
Crème fraîche - 4 tablespoons
White chocolate - 50g (2ozs) broken into small pieces
White chocolate curls to decorate (make with a potato peeler or grater)

- # Divide the frozen fruit between two shallow dishes and leave to thaw a little whilst you make the sauce.
- # Put the crème fraîche and broken chocolate into a small saucepan and heat gently, stirring, until the chocolate melts. Whisk gently until smooth but DON'T OVERHEAT or the sauce will separate.
- # Pour the hot sauce over the berries so they start to soften and the sauce sets on the fruit. Decorate with the chocolate curls and serve immediately.

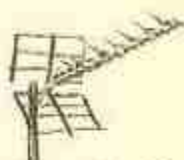
Tip: A tub of crème fraîche keeps for a week in the fridge, so use what is left over from this recipe by making it into a quick sauce, with some pesto, for pasta.

S.A. YEOMAN ROOFING

SLATE-TILE-FLAT
LEADWORK

REPAIRS-LEAKS-GUTTERING
VELUX WINDOWS

01548 561174/07525710453



Certification mark
digital 
Registered installer

South Hams Aerial Services

Keeping you in the picture

Dean Adams-your local qualified engineer

Registration no-18267391




freesat
sky

All installation/service work undertaken/free quotes

Tel-01548-562560/07849-324615

www.southhamsaerials.co.uk

Email-dean@southhamsaerials.co.uk

DANIEL KNIGHT **ELECTRICAL**

DOMESTIC AND COMMERCIAL
INSTALLATIONS

TESTING AND INSPECTION

SOLAR PV INSTALLATION

PAT TESTING



PROFESSIONAL AND FRIENDLY 24 HOUR SERVICE

07970809978



ELECSA

SOUTH HAMS **ELECTRICAL SUPPLIES**

**FOR A COMPLETE DIGITAL
SERVICE**

**Helpful advice, quotations, sales,
supply & installation of :-**

FreeSat HD, Aerials & Satellites

Relocation & Distribution

All Domestic Appliances-

- **Washing machines, cookers,
fridge freezers etc**

Top range & Budget brands

For service, call COLIN JARVIS

Tel: 01548 559001

07773 325316



**New Dwellings,
Extensions & Alterations, Loft conversions,
Barn conversions, Agricultural buildings, 3d Visuals.**

Stephen Guard Architects

**a complete architectural design solution
to fit your project needs.**

**Please contact us for a free
no obligation initial consultation.**

Tel 01548 521 540 or 07946663332

Email info@sg-architects.co.uk

www.sg-architects.co.uk



Bluewater Salcombe was established in 2005, and has provided a service to the local marine fraternity ever since.
We are now dealers for Mercury and Mariner outboards and for MacCracken inflatables. We also stock the full range of Calskuta parts.

Chandlery

Boating

Water sports equipment

Boat shop

Internal lifts

Exhaust pump hoses

Engine services

Boat storage

Boat mooring facilities

Why not pop in when visiting Salcombe for a coffee and look at your boating needs!!!!

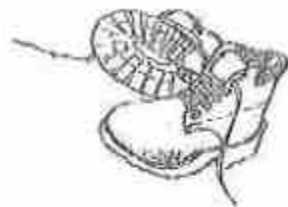
Telephone 01548 843383

E-mail sales@bluewatermarinesalcombe.com

Visit our web site at www.bluewatersalcombe.com



TRAMP



1 "Dry overhead and cold, but rather wet and muddy underfoot!" This was the description of the previous walk I led in December, and it applied equally to the circular walk of about 6¼ miles circumnavigating Loddiswell which I led on 17th January.

Five of us and a dog met to drive to Avon Mill near Loddiswell Old Station, from where we walked along the old railway line, which follows the river upstream, for about ¾ of a mile. Ben the dog took flight into the river when he encountered a group of five big dogs coming in the opposite direction, which caused some consternation when he at first couldn't find anywhere to get out on to dry land!

Crossing the river on the first of the old railway bridges, we made our way up quite a steep bridle path to the main road north of Loddiswell, continuing along a minor road to Allerton, whence we turned south along a footpath through Idston Wood to Idestone Farm. It was here that we encountered the muddiest and most waterlogged part of the walk, which turned the walk into somewhat of an assault course!

Then we trekked down the beautifully named Hoppy Green Lane back to the Avon Valley. We followed the road past Knapp Mill and Hatch Bridge, where the road was flooded but not impassable, then across fields to New Bridge and thence back to where we parked, followed by a welcome lunch at Avon Mill Restaurant. A walk with plenty of mud, but also plenty of variety and some fine scenery.... and good company!

Alastair Durden

2 Leaders please note; it pays to advertise. Bribery also helps - the promise of a pub lunch on this occasion, plus sunshine instead of rain, encouraged no fewer than 18 Tramps and two dogs to assemble at Lower Batson on the morning of 6 February for a 4.5 mile stroll around the perimeter of Salcombe. It is

quite some time since members turned out in such numbers (a few years back this was the norm) and we would respectfully suggest that this figure be used as a target for leaders to beat before the end of 2013, Christmas walk excepted? No prizes!

It was a cold start, but the climb to Batson Cross warmed us up! Then we encountered the bitter northerly gale as we crossed the Salcombe Road, and across fields towards Mary Knowle Farm. As we descended in the direction of Collaton our route became more sheltered and we were protected from the cold wind, but not the mud! - unavoidable after the wet weather of the past few months. Conversation tended to centre on holidays in warmer climes, especially the southern hemisphere, with some members just returned (from NZ) and others about to depart (to S Africa) - all right for some!

We turned at Collaton, and headed southeast along lanes to Collaton Wood, taking great care not to slip on the muddy footpaths. Downhill we then emerged onto the road at North Sands where there was an opportunity to clean boots on the beach and a chance for the dogs to romp in the water and on the sand.

The harbourside road took us past all the construction work and tall cranes building new apartments at the water's edge and the alterations to the old Marine Hotel. We wondered if the latter would be completed by mid-summer, as advertised. There seemed much work still to be done.

Once again, the Ferry Boat Inn was unable to supply refreshments. In spite of notices stating "Open All Day" etc., all doors were closed and locked, and the terraces empty. The Victoria's gain, once more - 13 walkers enjoyed drinks, soups and/or sandwiches (incredibly chunky, but tasty) served without any delay. After a convivial break we dispersed, some returning to their cars, others shopping in Salcombe.

Roger & Trisha Wilson

3

On Friday 22nd February it was bitterly cold with strong north-east winds. The likelihood of snow flurries and a wind-chill factor of -1°C had been forecast but, undeterred, eight walkers and a dog set off bravely.

The walk started at East Portlemouth. From the top of the village we could admire the stunning panoramic view overlooking Batson Creek, Snapes Point and South Pool creek. We then headed off down the footpath to the estuary road and shoreline below.

Low tide gave us the opportunity of a very pleasant stroll along the wide expanse of sandy beach from the ferry jetty, past Small's Cove, and on to Mill Bay. Here we were sheltered from the wind and enjoyed the views across the estuary to Salcombe. Ben, the dog, dashed around excitedly in and out of the water and had a great game of chase with another dog.

At Mill Bay we came off the beach and walked up the track leading up the valley. A canopy of mature trees lined the way. The track eventually opened out to Portlemouth Down and on to Gara Rock. We took in the wonderful views out to sea and inspected the pretty, thatched look-out hut that perches on the cliff edge.

The vibrant yellow of the gorse added much colour to the scene and sheep grazed freely on the grassy downs.

We carried on down the path to Rickham Sands and on to Deckler's Cliff. Here was evidence of the old field systems dating back to medieval times. Continuing along the cliff path and up and over the ridge, the Pig's Nose, Gammon Head and Prawle Point came into view. Prawle Point, with the Coast Watch station sitting on top, is the most southerly tip of Devon.

At this point we decided to make tracks back along the lower coastal path. Walking in this direction gave us a continuous view and ever-widening panorama of Bolt Head, Sharp Tor and the mouth of Salcombe estuary. Eventually, the path gradually turned into the entrance of the estuary and South Sands came into view on the other side, then North Sands with the ruins of Fort Charles.

The path continued behind Sunny Cove and then entered a copse. Glimpses of Salcombe could still be seen through the trees as we continued to follow the path back to Mill Bay. Here, three of the party who had brought packed lunches decided to picnic on the beach. The remaining five plus dog finished the walk back along the estuary road. A short drive took us to South Pool and a pleasant pub lunch at the Millbrook Inn.

Although a cold start, the day stayed dry and the walk (about 5/6 miles) was pleasantly sheltered from the chill winds.

Jenny Webb

4

On one of the few bright days in March (Monday 4th) eleven walkers and Ben set off from the Royal Oak at Meavy. We walked east through the village before reaching old woodland and climbed slowly towards Burrator Reservoir. Halfway through the wood we came across an old leat which in the early 1900's was used to supply water to Plymouth.

On reaching the reservoir we went a short way along the road before going over a stile which took us on to a permitted path along the shore of the reservoir. We stopped at a grassy area where the professional photographer, Al Parker, took a great picture of the group showing the beauty of the lake in the winter, which illustrated what a beautiful place it was to walk.

At the end of the reservoir we joined the road again and walked around the northerly end before heading left up on to the moor where we walked under the lee of Sheeps Tor with distant views to Sharpitor and Leather Tor.

After walking through the village of Sheepstor we turned right through farm fields and down through a wood which was showing the promise of bluebells in May. We then walked over an ancient bridge and joined the road which twisted back to the pub where all were welcomed with good pub grub - Ben just slept soundly on the floor as he must have run more than three times the distance of the walkers.

Liz & Peter Coates

**** SOUTH DEVON
OSTEOPATHS ****

PAUL HATTON

Registered Osteopath

Clinics at:-

Norton Brook Medical Centre
Cookworthy Road
Kingsbridge TQ7 1AE
Tel. 08444 778953

Dartmouth Medical Practice
35 Victoria Road
Dartmouth TQ6 9RT
Tel. 01803 832212

Appointments: 01803 500155

Enquiries: 07813 151560

**SOUTH WEST
UPHOLSTERY SERVICES**

Paul & Debbie Tucker

**RE-UPHOLSTERY
SPECIALISTS**

**Domestic furniture
Antique & Modern
Large selection of fabrics**

**Formerly in Wallingford Road
NOW at :**

**1 Bonwitco Buildings
Torr Quarry Ind Estate
Kingsbridge TQ9 7QQ
01 548 521866**


FIRE AND SECURITY
01548
559330

AG Fire and Security

Your Local Security Installer


FIRE AND SECURITY
01548
559330

- Intruder Alarm Systems, CTV, Fire Alarms and Access Control
- Installation, Servicing and Repairs, 24 Hour Callout
- Alarm System Monitoring, BT red care, Dual Com, Digital communicator
- CCTV with remote viewing home or business

SSAIB

Approved Installer



TEL: 01548 559330

M 07971 198108

www.agfireandsecurity.co.uk Email sales@agfireandsecurity.co.uk

THE SALON

*Hairdressing for
men and women*

**Theresa & Lauren
& the Salon**
team welcome clients
old and new

Pedicures & Manicures

*....we are always
pleased to see you !*

**43 Fore St
Kingsbridge 01 548 852 128**

GMJ

CHIMNEY SERVICES.

SUPPLY - SERVICE & INSTALLATION

OF

WOODBURNING & MULTIFUEL
STOVES

CHIMNEY SYSTEMS - FLUE LINERS
COWLS - RE-POINTING

ANTIQUE FIREPLACE RESTORATION
HETAS REGISTERED ENGINEER

Tel. - 0188 788 5158

GMJCHIMNEYSERVICES@GMAIL.COM

THURLESTONE PO & STORES

Your LOCAL Store

- Fresh Bread, Fruit & Vegetables
- Milk & Dairy, Cold Meat & Cheese
- Locally made Pasties, Pies & Cakes
- Sandwiches & Snacks
- Newspapers & Magazines
- Off Licence
- Stationery & Greeting Cards
- Gifts & Beach Goods

Plus other General Groceries and Provisions

Special Services include

- Johnsons Dry Cleaning & Laundry
- Colour Photocopier (A4 & A3)

- NATIONAL LOTTERY & SCRATCHCARDS
Also available at your Local Post Office

- Foreign Currency (24 hrs notice required)
- Car Tax & Bill Payments *
- Banking #, Savings & Investments
- Gift Cards
- E Top Up

* Fees may apply // restricted to certain banks

Grocery Delivery within the Village—£2 fee
Credit and Debit Cards accepted (min spend £5)
Opening times in back of Village Voice

Call in and browse, you'll be pleasantly surprised
PHONE 01548 561917

**A MORE PERMANENT
SOLUTION TO A FLAT
ROOF PROBLEM**

Firestone

BUILDING PRODUCTS

NOBODY COVERS YOU BETTER
Tough Single Ply EPDM
Rubber Roofing Membrane

20 YEAR GUARANTEE
WITH A 50 YEAR PROVEN PLUS LIFE

RESISTS WATER, SNOW & SUN LIGHT
CAN OVERLAY OLD ROOFS
FOR A NO OBLIGATION SURVEY & QUOTE
Yeoman & Fradley Roofing
Also Slate Tile and Leadwork

Tel 01548 561174
Mob 07581 120129

sudoku

www.sudoku.com

© Puzzles by Pappocom

(As featured in *The Times*, Monday to Saturday)

8	9	4			7			3
				4				1
			3		2			9
3		9				4		
	1			3			7	
		2				3		5
9			1		4			
6				9				
7			8			2	9	4

Tough

No. 81

3					2	6	9	
		7	5					3
	9							2
	7			6	3			4
			8		9			
5			7	4				6
7							4	
1					4	7		
	2	8	1					6

Tough

No. 82

	7					3	1	
4	6		7					2
		9	2			8		7
	8	3	6		2			
			9		3	1	7	
8		2			5	7		
6					7		3	1
	3	7					8	

Tougher

No. 81

			4	5				3
	8			9	6		2	
		4				8	7	
		7					6	8
6	4					9		
	2	8				1		
	7		6	8			3	
4				3	2			

Tougher

No. 82

A Mystery Prize for Men Only

Congratulations to George Delafield, Sue Dwyer, Pat Leare, Pauline Lonsdale, Jennifer McLay, Gill Proops, and Lisa White, who all submitted correct solutions to our battle for the bottle in the Feb-Mar issue. The ballot for the bottle this time went in favour of **Pat Leare**, so special congratulations to her. The gentlemen of Thurstone still seem reluctant to enter the fray, with only a single entry from them this time. Is the contest too tough for them, or too easy? To try and encourage more men to compete, we are providing a mystery prize for men only this time, in addition to the Chateau Sudoku prize. All will be revealed in our next issue! Entries to 25 Mead Lane, as usual, by 5th May 2013.

Bulbed Out

By Traveller

Before Christmas I planted several bowls of white hyacinths, which fortuitously came up just in time for the festivities, filling the house with their glorious scent. I received further bowls as Christmas presents, and then, when I was unwell, kind people sent me dozens more, for which I was indeed grateful, but I was now becoming bulbed out. Delightful as they are when the flowers are pure white above their spring green stems, as they begin to droop and die, rather like wind-blown beige paper bags, they begin to lose their charm, and now I have to think about where on earth I shall plant them outside.

Years ago, I did plant dozens of hyacinths below an old curved stone wall, and every Spring they create a delicate semi-circle of pink, white and blue, and have brought us much joy. Subsequently, I have done this every year, till now there are almost too many, making it impossible for early grass cutting in that particular area. Adding further bulbs to this pretty display just cannot be.

Living abroad on a farm, the things I missed most, apart from the sea, and Marmite, were our beautiful English spring flowers, which refused to grow in that dry, hot climate, however vigilant I was with the watering, and trying to get the soil right with little knowledge, and of course, the added disadvantage that I am no gardener, and never will be. Most of the daffodils, crocuses, snowdrops and primroses I smuggled into the country (the rules on bringing plants and bulbs from abroad, being far more relaxed in those days) on a request from my friend, who wanted to experiment with growing them in a shaded spot, sadly never came up at all. Those that did, when they occasionally opened very early in those cold African mornings, had by lunch time become sad, shrivelled sticks. Even in the shade, the rising temperature was to be their ultimate downfall.

In retrospect, I should have stuck to growing Proteas, or some other flower indigenous to that continent, but no, stubborn as ever, I was determined to bring a little bit of England with me, which sadly never came to be.

Now, it is the other way round, and I have to find a new spot where I can plant this latest stash, for surely before next Christmas I will not be able to resist planting or buying bowls of white hyacinths, and I am also confident that there will be further gifts of these lovely flowers. Though I must just make sure that I am never ill again!

Remembering this failure in Africa prompted me to write a poem, as we all hope that the weather will soon turn to those warm, sunny, rain-free days of Spring, so here it is.....

Into Springtime

And then from beyond the clouds the sun appears.
Fingers of jagged gold splinter the showers, and rainbows hover.
Small plants lift their heads from small beginnings,
later to flower with trees and all things tall.
Oak and Ash spar with each other to determine soak or splash.
Orange fox cubs roll on sun-warmed earth, and chase each other,
playing hide and seek in the long grass.
The painted pheasant, knowing that shooting time has passed,
struts his stuff to his dowdy hen bird, a spring in his step,
for Spring is in the air.



Burton Farmhouse & Garden Room Restaurant

Galmpton - Hope Cove - South Devon

Bed & Breakfast

*** October, November & December

Over 60's Lunch

Monday & Wednesday £7.50

Booking Essential ***

(Closed Dec 22nd to Jan 3rd)

Tel: Anne Rossiter on 01548 561210

Fax: 01548 562257

E Mail: anne@burtonfarm.co.uk

Website: www.burtonfarm.co.uk

Andrew Hurrell

PLUMBING & HEATING ENGINEER

On-Tap Bathrooms

Design

Supplies

Installation

Tiling

Disabled/Elderly facilities

*For a complete
Bathroom make-over service
Contact Andrew Hurrell*

19 Northville Park,
Kingsbridge TQ7 1AR
Phone: 01548 854411
Mobile: 07970 970387

Carpet Cleaning



Fine Shine

A COMPLETE CLEANING SERVICE

Car Wash & Valeting

- Upholstery & Rug Cleaning
- Carpet Cleaning
- Spot, Stain & Odour Removal
- All Types of Hard Floor Cleaned & Polished
- Pressure Washing

- Spring Cleans
- Builders Cleans
- Window Cleaning
- Car Wash & Valeting

Tel: 01548 854313

Mobile: 07989 300453 / 07971 247375

Email: info@fine-shine.com



www.fine-shine.com



Unit 10, Orchard Industrial Estate,
Poplar Drive, Kingsbridge, Devon TQ7 1SF

Graeme Martin

PLUMBING
& TILING

Bathroom Installations
& Renovations

Taps & Valves

Wall & Floor Tiling

No job too small

Tel: 01548 559112

Mob: 07774 033594

THE DOG LODGE



*** **Luxury Licensed** ***

*** **Boarding** ***

Viewing welcome by appointment

7.30 am—12.00 noon

5.00 pm—7.00 pm

Tel 01548 581159

www.dog-lodge.co.uk

YOUR LOCAL GARAGE AND M.O.T. TESTING STATION

**BLIGHT
ENGINEERING**

BANTHAM GARAGE, THURLESTONE
(Tel: Kingsbridge 540220)

Diagnostic Checks

SERVICING & MECHANICAL REPAIRS OF ALL MAKES

Engine Reconditioning and Transmission Overhauls

Wheel Balancing



M.O.T.

MOWERS & CULTIVATORS SERVICED

Petrol

Tyres

Oil

Grey Matter

A BOTTLE OF WINE to the first all correct entry (or the closest to correct!) drawn on 1st May 2013. Please submit entries to: 5 Mead Lane, Thurlstone, TQ7 3PB or email: cgwonthenet@thethread.co.uk

THE BIG NAME GAME

Below is a collection of famous people (past and present) from sport, literature, show business, etc. You will see only their real names and anagrams of the assumed names by which they are better known. Fill in as many of the names as you can. The prize goes to the entry with the most correct answers. Good luck!

Eg Ernest Evans CHECK BY CHERUB (singer) Chubby/Checker

1. Betty Joan Perske A NUCLEAR BALL (actress) -----/-----
2. Israel Baline BRING IN LIVER (composer) -----/-----
3. Priscilla White CLICK A BALI. (singer/presenter) -----/-----
4. Phyllis Primrose Pechey FROCK AND CANDY (TV chef) -----/-----
5. Richard Hearn TRY RAMPS (actor) -----/-----
6. Walker Smith YOUR SOARING BARNS (boxer) -----/-----
7. Elaine Bookbinder BE LIKE ROOKS (singer) -----/-----
8. Eric Arthur Blair OGLE ROWER LEG (author) -----/-----
9. Michael Shalhoub OH A FARM SIR (actor) -----/-----
10. Noah Kaminsky OIL AND DENIM (singer) -----/-----
11. Chris Collins FERN RAN KINKS (comedian) -----/-----
12. Samuel Langhorne Clemens MINK AT WAR (author) -----/-----
13. Florence Nightingale Graham BREATHED IN ZEAL (beautician) -----/-----
14. Jerome Van Aken MY SHRUB COHESION (artist) -----/-----
15. Cecilia Kalageropoulos AS A CALM LIAR (singer) -----/-----
16. Bernard Schwartz TRUSTY COIN (actor) -----/-----
17. Samuel Gelbfisz MY GOLD SWAN (film producer) -----/-----
18. Domenico Theotocopoulos COG REEL (artist) -----/-----
19. Norma Jean Baker MINOR ROYAL MEN (actress) -----/-----
20. Frederick Bulsara CURED MY RED FIRE (singer) -----/-----

Solutions to previous Grey Matter:

1. The fear of beautiful women
2. The fear of thunder and lightning
3. The fear of flowers
4. The fear of colours
5. The fear of confined spaces
6. The fear of precipices
7. The fear of glass or crystals
8. The fear of computers
9. The fear of insanity
10. The fear of objects on the right hand side of the body
11. The fear of accidents
12. The fear of termites
13. The fear of cats
14. The fear of loneliness
15. The fear of marriage
16. The fear of getting old
17. The fear of being infested by worms
18. The fear of mercurial medicines
19. The fear of movement/motion
20. The fear of lakes
21. The fear of punishment
22. The fear of losing one's erection
23. The fear of mushrooms
24. The fear of ants
25. The fear of sleep

Congratulations and the bottle of wine to Charlie Barker of Thurlstone

February

Five guests were welcomed to the meeting. A get well card was circulated for everyone to sign for sending off to Dorothy Candy who was in Torbay Hospital.

Jean Yeoman and Pat Macdonald were both given very nice gerbera plants - Jean's as a belated prize for winning the bloom of the month competition for 2012 and Pat's for doing the birthday posies each month and so having her own birthday in January unmarked. Both were delighted with their gifts!

A nice profit of £220 was raised from the January beetle drive, which had added a bit of fun to a cold January evening. The five members who went to the Exeter pamper day came back "refreshed and reinvigorated" so they tell us.

Linda Carew (newly retired as the WI county chairman) told us some of the background to Flora Thompson's life relative to her most popular book *Lark Rise to Candleford*. The author, born in 1876 and reared in a very rural Oxfordshire village, used experiences from her working life as a Post Office clerk in this semi-autobiographical trilogy.

March

Sally Jubb, MA, BSc, a textile conservator and needlewoman, told us about her work on treasured antique materials. Items come for specialist attention to her studio at Cockington or she journeys to attend to items *in situ*, doing a lot of work for the National Trust. Her first assignment on qualifying was for Cotehele on tapestries and carpets.

Good wishes were sent to Dorothy Candy, now in Dartmouth Hospital, and

to Chris Field who will shortly be undergoing further surgery.

Thurlestone's quiz team had come fourth of the 17 teams competing recently at Blackawton in the first round of this county event. They were thanked for representing our WI so well.

A last-minute change of venue from the pub lunch planned for the White Hart at Dartington proved a happy move as the lunch enjoyed instead at the Oyster Shack proved to be "absolutely delicious".

There was a special competition to decorate three biscuits in Easter style, which was won by Jo Odams. She was rewarded with a nice chocolate Easter egg.

Looking Forward

The speaker on 11th April will be Mary Cosley "Working as a midwife in Nepal".

Parties of members hope to attend the spring council meeting at Torquay on Wednesday 17th April, and the group meeting at South Milton on Thursday the 25th April.

On Wednesday 22nd May there is the wine and cheese tasting at Sharpham Vineyard.

Members will travel to Cardiff for the national annual general meeting taking place on Saturday 1st June.

A visit to RHS Rosemoor is planned for Thursday 25th July.

Forthcoming Elections

President Pat Clarke gave us a timely reminder that our annual meeting will be in May, when she will be retiring from office, and urged members to stand for election to the committee, assuring us that we would enjoy the experience.

Carers Direct (SW) Ltd

Do you, or anyone you know,
need some extra help?

We provide homecare in the South Hams area and we can visit for any length of time from 1 hour to 24 hours, live-in care, night time sleepers, sitters and wakers. Our carers are friendly, reliable and experienced and can help with shopping, personal care, companionship, outings and appointments and light housework.

Call the office for a chat on 01548 816195 and speak to Sally, Gill or Claire

www.carersdirect.org.uk

Accredited by Devon County Council and registered with the Commission for Social Care Inspection

Registered Office: Ferridale, Kingston,
Kingsbridge TQ7 4PU

Lyn Oggelsby

Alterations to Fine Clothes

Waist & length adjustment

Zip replacement & small sewing jobs

**NOW MAKING CURTAINS
& CUSHIONS!**

Call now on 01548 854242



18 Knowle House Close
Kingsbridge TQ7 1AN



Four Seasons Gardening

General Garden Maintenance

Lawn Mowing, Hedge trimming

Power Washing etc.

Richard Jackson

Tel: 01548 562039
Mobile: 07976 886946
rmjackson04@hotmail.com

WORDWISE

Christian Bookshop, Coffee Shop & Resource Centre

41 Fore Street, Kingsbridge

Christian books, cards for all
occasions, gifts, music CDs,
posters

Coffee shop serving delicious
home-made cakes

Over 75,000 Christian books
for all ages available from our
suppliers

Orders can arrive within 24 hours

Open Monday to Saturday
10.00 am to 4.00 pm

Volunteers always welcome
for the shop or coffee shop

Telephone 01548 856571

www.wordwise-bookshop.co.uk

SHIP SHAPE

**DROWNING IN PAPERWORK?
FEELING DISORGANISED?**



We can help you to create simple solutions to organise paperwork or declutter your home, giving you space and peace of mind. Professional and experienced, reliable and confidential service. 01548 852676 or 07970788665 iainhmorrison@googlemail.com



Claire

Louise Hill

**Professional Painter and
Decorator**

Home 01548 559247/ mobile
07976129162

*Award Winning – Fully Qualified –
Fully Insured*



Annie Quinton

**Dress Designer
& Bra Stockist**

*Styling for all shapes
and sizes*

For all your Pattern, Fitting, Sewing
& Alteration requirements

Tel (Kingsbridge): 01548 852761

Mob: 07952 772155

Email: fitforcurves@btinternet.com



Devon
HearingCare
Caring for your world

ENJOY HEARING AGAIN

**Local, independent family
run Company**

FREE hearing tests

30 DAY trial

LATEST technology

Call us today to book
your free hearing test

01548 852852

Home Visiting Service Available

97 Fore St., Kingsbridge TQ7 1AB



SOUTH HAMS SOCIETY EVENTS

April - May 2013

Why not join members of South Hams Society on **Saturday 6 April** for a **Beach clean at South Milton**? Meet at the Beach Café at 10.00am. This is a long beach with sand dunes and needs energetic volunteers. Hot drinks are served compliments of the café owners. LW 1200BST.

At 7pm on **Tuesday 9 April**, **Jonathan Dimbleby** will chair an **Any Questions?** on the South Hams AONB at the King's Arms Hotel, Kingsbridge. Society members have priority booking from Monday 25 March. From 1 April, booking is open to all. Contact Flo Stathers, 5 Derby Road, Kingsbridge, TQ7 1JJ, on 01548 857567 or at flostathers@hotmail.co.uk quoting your telephone number or e-mail address. On the day, tickets (£5) will be reserved until 6.30pm. After that, any remaining places will be allocated on a first-come-first-served basis. To book supper afterwards, contact Cathy Walker at the King's Arms on 01548 852071.

On **Friday 26 April**, there's visit to the **River Dart Country Club** to see a working Archimedes Screw, followed by a visit to Miles and Gall Furzedon at Ponsworthy for a tour of their farm and to see their cross thread hydro generator. Contact Pat Smith on 01548 531413 or at ming.smith@virgin.net, or visit www.waterleat.co.uk

On **Saturday 25 May**, join us at 10am at the Lookout Café for a **Beach clean on Gara Beach**. Mick Loates hopes to join us and will give us the benefit of his abundant knowledge of all things natural! LT 1300BST.

For more information contact Flo Stathers on 01548 857567 or at flostathers@hotmail.co.uk or visit the SHS website: <http://www.southhamsociety.org>

THURLESTONE PROBUS CLUB



The Club, for retired Professional and Businessmen, usually meets in on the second Friday of the month in the Thurlestone Hotel to hear a speaker and have lunch. February's speaker was **Philip Evans** whose talk was entitled 'The Great War – a Sideways Look', while the March speaker was **Paul Lobb**, a retired policeman, who spoke on 'Criminal Profiling'.

The March meeting also included the Annual General Meeting in which **Mike Sparrow** was elected as the new Chairman to succeed **Michael Reid**. The remaining Committee members – **Tom Trender** (Secretary), **Bill Clarke** (Treasurer) and **Richard Sherrington** (Speaker Finder) all volunteered to continue in office.

Our next meeting is on Friday April 12th where the speaker is **Mac McLaren** who will talk on the 'Penlee Lifeboat Disaster', while at the May meeting, on the 10th., the speaker is **Robin Blyth Lord** who will speak about the 'Radford House and Estate' – both meetings beginning at 11:45 am.

If any retired gentleman is interested in joining the Club, or attending as a guest, please contact the Secretary, Tom Trender, on 560893.

National Trust South Hams Centre

Programme for February and March 2013

**Wednesday
10 April**

Coach Trip to **Buckland Abbey** (NT) and The Garden House, Buckland Monachorum. Former home of Sir Francis Drake with its interesting history and recently opened Cider House Garden, then after lunch on to The Garden House, a favourite of Alan Titchmarsh and Carol Klein, where the spring flowers should be at their very best. Refreshments available.

**Tuesday
30 April**

Coach Trip to the **Duchy of Cornwall Nursery** near Lostwithiel, and Bodmin and Wenford Railway. Coffee at the Duchy Nursery then on to Bodmin for a leisurely round trip through the beautiful Cornish countryside by steam train. Refreshments available or bring a picnic lunch.

**Thursday
9 May**

A walk from East Soar. Meet at the NT car park at East Soar (GR 713375) then a four mile coast and country walk towards Overbecks. Return by lunchtime.

**Tuesday
21 May**

Midi-coach to **Lytes Cary Manor** (NT). Morning in the pretty Somerset town of Somerton, before spending the afternoon at the intimate medieval manor house at Lytes Cary, with its Arts & Crafts garden.

For more information about these events, or about joining the National Trust South Hams Centre, please contact Midge Elliott on 01548-562017 (9am to 5pm only)

PLYMOUTH GILBERT AND SULLIVAN FELLOWSHIP

After last year's departure from the G&S canon the Plymouth Gilbert and Sullivan Fellowship, winners of many awards from NODA and the Buxton International Gilbert and Sullivan Festival, are again presenting one of the so-called "Savoy" operas.

Their major 2013 production will be **"The Gondoliers"**, under the direction of Alan Spencer, with orchestra under the musical direction of Jane Warwick.

The show runs from 9-13 April at the Devonport Playhouse, Fore Street, Plymouth, PL1 4DW, evenings at 7.30pm plus a Saturday matinee at 2.30pm. Tickets at £14.00 (concessions £12.00 for over 60s and TRAC members on Tuesday and Wednesday evenings, £6.00 for under 16s on Tuesday and Wednesday evenings and Saturday matinee) can be obtained online at www.plymouthgilbertandsullivan.com or from the company box office on 01752 249988.

Discounts on group bookings are 50p per ticket on 10 or more, £1.00 per ticket on 20 or more.

For further information please contact Pauline Smith by e-mail as above or by phone 01566 775557 or 07977 731378.

Rest Assured

Property Management
Caring for your 2nd
Home is our 1st Priority

Rest Assured provides second home owners with a tailor made service to ensure homes are well cared for when unoccupied.

Services include:

- *weekly property checks
- *key holding
- *cleaning
- *organising tradesmen
- *laundry
- *holiday changeovers
- *and so much more.....



Call Patsy to see how we
can help you.

01752 830409

07722294060

restassured@hotmail.co.uk



South Face Garden Care

Maintaining Distinctive
Gardens with an Experienced,
Qualified and
Sensitive
Approach

to include:

- Regular Garden
Maintenance
- Planting Design
- Hedge & Tree Work
- Formal Pruning
- Fruit Tree Care

- Local business
- Fully insured
- References
available

Telephone
Jason on
01548

830910

or

07976 726753

jason@sflgardens.co.uk

TAX RETURNS!

If you are required to submit one to the Inland Revenue,

MALCOLM FRANKE BSc., FCA

invites you to discuss the benefits to you of using his

ACCOUNTANCY AND TAXATION SERVICES

The benefits include

- Competitive, fixed fee quotes.
- Personal service from a qualified chartered accountant.
- Over 20 years experience of dealing with individual taxpayers and small businesses.
- Home visits as required, at your convenience.
- Integrity and confidentiality guaranteed.
- Free initial consultation.

If you want your affairs dealt with to your benefit, at your convenience, by a local professional person you can trust, simply give me a call on

01548-562320

Malcolm Franke - Chartered Accountant
Campania, Links Road, South Milton, Kingsbridge, Devon, TQ7 3JR.

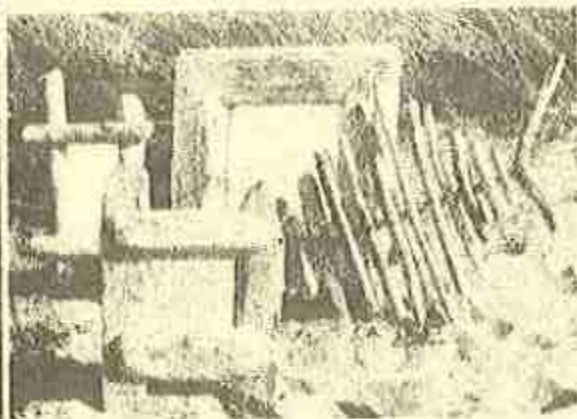
ALDERTON **GARDEN MAINTENANCE**

Year round garden maintenance

weeding, digging, planting,
care of flower
and
vegetable beds,
mowing, edging, strimming,
pruning and hedge cutting.

Experienced and fully insured.

Please call 01548 562250



Local Driftwood Art

Mirrors, tables, shelves, candles,
funky fish, desks and sculpture

Buy online at www.beach-life.biz
or ring 562121 for more
information or to arrange a
viewing at our workshop in
Bantham

**Stags is the only agent in the
South Hams to offer all of the following:**

- Regional offices in Exeter, Plymouth, Totnes and Dartmouth and a further 15 computer linked offices across the West Country
- International coverage for your property through the websites www.stags.co.uk, www.rightmove.com, www.primelocation.co.uk
- Prominent Fore Street Office
- Weekly colour adverts in the South Hams Gazette and Western Morning News
- Colour property particulars with digital photographs and floor plans
- Fortnightly written reports with detailed information of all enquiries
- London office situated in Pall Mall
- Accompanied viewings
- No sale, no fee



Call us now to find out
how Stags really do
reach the buyers that
other estate agents
just don't!

83 Fore Street
Kingsbridge
Devon, TQ7 1AB

Telephone: 01548 853131
Email: kingsbridge@stags.co.uk

SCHOOL REPORT

By Bett Rhymes

Pass it or Past it? There lies the question. I wouldn't be so rude as to suggest that any of my readers are past it but I can only presume that by failing in your attempt to dig deep into your grey matter you aren't as smart as our current 11 year olds.

Following my test, distributed in the last edition of Village Voice, disappointingly, not one test paper was handed in for "Miss" to mark. Alas, no prizes awarded, no gold stickers issued, no A star students.

I figured there not to be a need to issue the answers but more of a need for a little education!

The final two questions of the test were based around a *haiku*. First, what is a haiku? Secondly, write a haiku about your school days. Today's lesson will be to learn to write a *haiku*.

A *haiku* is a traditional Japanese poem that has a fixed pattern of seventeen syllables arranged in three lines: 5 - 7 - 5.

For example:

Pass it or past it?	(5 syllables)
No prizes or gold stickers	(7 syllables)
"Miss" disappointed!	(5 syllables)

A *haiku* is a simple form of poetry that aims to paint a picture using words as economically and effectively as possible. Are you getting the picture that "Miss" felt cheated out of marking and probably chuckling at your homework!

I asked the older children and their teachers to help in my education mission by writing a *haiku* about school. They came up with some great poems which I hope you will enjoy reading.

In amongst them is one from our parish council chairman. For those of you who know him, I don't think you'll have any problems spotting it!

School Fudge Pie - yummy!
Hockey-cold, rough, bruises - yuk!
Friends - lots, married one!

School days are happy
Its great to have loads of friends
School is really cool.

School days are joly
Sports, Sats, Mufti, lunch & more
Its wicked, bring on more!

Great education
Teachers help me every day
I love Thurstlestone school.

Science is so great
Learning maths and art is fun
Teachers OK too!

Respect everyone
Think, put yourself in their shoes
I respect my friends.

OUTSIDE THE OFFICE
SHOUTED AT BY MRS DAWE
WON'T DO IT AGAIN!

Always in trouble
Wrong place, wrong time, all the time
Sorry Miss - ouch, ouch!

In '72
Decimal money was new
Milk bottles at break

Custard is running
Outside we run and have fun
Friends make me happy.

School trips are awesome
Evacuee for a day
Buckland Abbey - yay!

Enjoyed story time
Guinea pigs on laps in maths
I still can't eat prunes!

Freezing cold classroom
Brrr! Boiler's broken again
Thank God it's Friday!

Christmas lunch is fun
Eating turkey and pudding
Wearing Santa hats

I love school ice cream
Strawberry or chocolate sauce
Yum, yum in my tum!

Thurstlestone school is cool
Although we don't have a pool
Trips to beach are fun.

And finally from "Miss".....
Village Voice readers
I hope you've learnt the lesson
You must try harder!!!!



29 Fore Street, Kingsbridge, Devon, TQ7 1AA
Tel: 01548 857000

2 Ensign House, Parkway Court, Longbridge Road, Plymouth, PL6 8LR
Tel: 01752 246000

E-mail: info@beersllp.com – www.beersllp.com

For over a century our clients have relied on us for advice and support they need to deal with a wide range of legal issues. We are pleased so many readers are already clients and are happy to welcome those of you who are not yet clients of the firm.

- Buying, selling and remortgaging property
- Wills and probate
- Lasting Powers of Attorney
- Inheritance Tax Advice and wealth management
- Divorce, relationship breakdown and children
- Employment disputes
- Landlord and tenant, commercial property
- Business Law

Your financial team, tailored to deliver your financial goals



Your Partner for Life

3 South Place, The Promenade, Kingsbridge, Devon TQ7 1JE

Tel: 01548 856444 www.sabrefinancial.co.uk

Sabre Financial Planning Ltd is Authorised and Regulated by the Financial Services Authority

Lucille Tomlinson, BSc(Hons), MScCh.

State Registered Chiropodist

Visits undertaken in the South Hams area
Including Thurlstone



*Have your feet treated at home by a State
Registered Chiropodist*

Or

Visit the modern, well equipped Surgery at

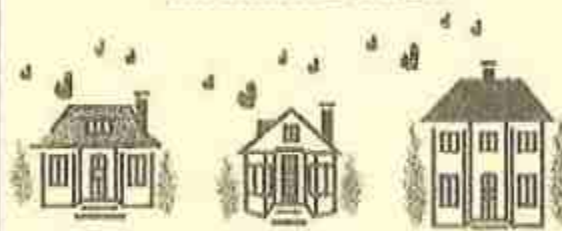
7 Victoria Place, The Promenade, Kingsbridge
Mon, Tues, Wed, Fri & Sat 9am-4.30pm
Thurs 9am-6pm

**For appointment or further details
Please telephone 01548 852042**

*Friendly, experienced, professional care and treatment
(ex NHS Podiatrist)

*Comprehensive range of treatments available for all
foot conditions as well as routine care

LIFE SMOOTHERS



TO HELP LIFE RUN MORE SMOOTHLY

Caretaking / key holding
Weekly property checks
Liaising with tradespeople/services

Spring cleaning
Pre / post move cleans

Small decorating work

Year round garden care service

We offer a full professional service-
throughout the year

Tel: 01548 550538 or 07588604387
Or e mail: lifesmoothers@aol.co.uk

TAXI ~ MIKE

0771 451 2516



Local and distance taxi service

All stations, airports and ports.

Local journeys: Kingsbridge, Salcombe,
Hope Cove, Galmpton, Thurlstone,
North Sands, South Sands, Bantham,
Bolberry, Soar Mill Cove, Malborough,
South Milton, Churchstow, Aveton Gifford,
Bigbury on Sea (Burgh Island), Loddiswell,
Plymouth, Exeter

E: taxi-mike@salcombcanddistricttaxico.co.uk

www.salcombcanddistricttaxico.co.uk

Theresa M. Gaunt M.C.S.P.

Physiotherapist

**Registered with the Health
Professions Council
"Bowen Technique"**

Home visits upon request

**Spring Dale,
South Milton,
Kingsbridge,
TQ7 3JQ**

TEL: 01548 560603
Mobile: 07548213633

Authorised by many Medical Insurers

Weather Wag

By Jan Turner

Today 11th March 2013 I am reminded of the Great Blizzard sweeping through the West Country in 1891. The snowstorm that raged here 122 yrs ago was so dramatic that a new word had to be appropriated into the English Language to describe it - **blizzard**. Thought to derive from a German expression, '*Der sturm kommt blitzartig*', which translates as 'The storm comes lightning-like', a blizzard is defined by the Met Office as '*a violent snow-storm with winds blowing at a minimum speed of 35mph and visibility of less than a quarter of a mile for three hours.*' (*The Wrong Kind of Snow*, Woodward and Penn).

Today, when I did my recording at 8.30am, the wind was blowing a sustained 35mph, the visibility was a bit more than a quarter of a mile, and there was snow, very fine, and driven along by a North Easterly gale. Not a lot, but still **snow**. A good job that it was short-lived here, as I had to travel to Plymouth with a poorly car! For the first time in several years I had to melt the snow in the rain gauge to get the equivalent in rainfall.

Back to the *Wrong Kind of Snow*, this 1891 storm sets a benchmark for fifty years, and ranks alongside the greats - 1881, 1927, 1947, 1963, and February 1978. Heavy, fine, powdery snow and strong easterlies tore across South-West England and Wales for five days. The average depth of snow was 2 feet, with drifts of up to 30 feet. Apart from innumerable incidents and private tragedies, over half a million trees fell, as well as many of the new 'telegraph poles': 220 people died, many on 65 ships which foundered in the English Channel. At least 6000 sheep died and 14 trains were stranded in Devon alone. The Great Western's Zulu Express left Paddington at 3pm on a Monday, ran into heavy drifts of snow on the southern side of Dartmoor and reached Plymouth four days late at 8.30pm on the Friday. There was even snow in the Scillies, the mildest part of the UK.

Just a few days ago the days were almost

spring-like, warm and balmy, sunny and calm. The spring flowers, daffodils, crocus, hyacinths, are beginning to flower, and even Forsythia is showing its yellow buds. Have you ever thought about how we define SPRING. When does it begin, what defines it?

The snow did cause some disruption, didn't it? Poor old Sussex saw some 5cms or so. The temperature here was -4°C last night and rose to 2.5°C yesterday. The wind chill, with a sustained speed of 35mph, was about -12°C. The daffodils in my garden have been decimated and snow is still lying in shady patches.

Compare this with an entry in 'the book' for 12th March 1957. The temperature reaches 23.3°C at Haydon Bridge, Northumberland and 23°C at Cape Wrath - record highs for the time of the year. The reason is the *Föhn*, a mountain wind that makes the lowlands in the lee of the land unseasonably warm. Moist southerly airstreams rise over the windward slopes of high ground - the Pennines and Western Highlands in this case - and descends the lee slopes, arriving back at low level, 3°C or more warmer than their original state. The phenomenon was first studied in the Alps - the term is German - but *föhn* winds occur in many parts of the world. In North America, the native Indians experienced it off the Rockies and it became known as the "Chinook" or snow-eater.

Now back to SPRING! What day does it officially start? *Wrong Kind of Snow* states:- Meteorologists may date the season from the beginning of the month (1 March), but most people traditionally agree the real time is the Vernal or Spring Equinox, mid March. While the Equinox usually falls between 21-23 March, day and night length seem to become equal a day early, i.e., 20th March, because the sun's rays 'refract', or bend, as they come through the atmosphere. After the Equinox, temperatures usually rise, as the input of the sun's heat becomes greater than the loss by cooling at night.

I suppose for the industrious housewife in

days gone by, or for the servants in the big houses, and even today in some households (particularly the National Trust), it does lead to some extra effort in the house. The tradition of Spring cleaning, which follows from these astronomical developments, is firmly rooted in the weather. The 20th March is, on average, the day that temperatures first rise to 15.5°C (60°F). The arrival of warmer temperatures signals that the home no longer requires heating, and as the traditional open fires or wood (or oil)

burning stoves and ranges deposit dust, ash and soot over everything, now's the time, with the heating off until the autumn, for curtains, carpets and other domestic surfaces to get their thorough annual 'spring clean'. Will you be doing this I wonder? I shall have to look to my laurels but there's so much else to do - my Village Voice article, The Rock, letters to stepson in Madagascar, the garden, you name it - and I'm afraid the housework gradually slips down the list! But it does get done eventually....

Here are the weather statistics for February, quite a dry month for a change but it is more often dry than we like to believe. July is often wetter!

Weather Synopsis Beach Cottage, South Milton, Kingsbridge TQ7 3JR February 2013

WIND

General Direction

Westerlies = 9 days
Easterlies = 17 days
Northerly = 1 day
Southerly = 1 day

Speed

Top gust = 42mph on 5th
Lowest daily mean = 4mph on 9th & 11th

TEMPERATURE

Highest daily = 11.3°C on 15th
Lowest daily = -2°C on 25th
Highest Daily Mean = 9°C on 1st
Lowest Daily Mean = 1.1°C on 24th
Monthly mean = 5.1°C
Monthly average = 7.4°C over 16 years

RAINFALL

Number of wet days = 7
Highest daily amount = 13.1mm on 9th
Monthly Total = 38mm
Monthly Average = 65.4mm over 16 years

BAROMETER

Highest = 1036mb on 27th
Lowest = 1003mb on 10th

SUNSHINE

Sunniest day = 10.1hrs on 18th
Total for the month = 83.1hrs.
No sun at all = 9 days
Less than 1 hour = 4 days
Monthly average = 71.76hrs

I Hope spring really does arrive soon, as I'm getting a bit fed up with the cold. Now that my lovely dog Ayla has died, I am not so weather-beaten from walking on the beach. All too lonely at the moment. Maybe a new one will appear in due course.

Keep safe and well, and enjoy the sunshine we will surely get during April and May. I think we will have deserved it, don't you?

Jan T



5th generation
family firm

If you can't find it
come to Donovans

Established in
Kingsbridge 1873



Our staff will be happy to show you our wide range of products including:

Kitchenware

Flasks

Cool Bags

Cleaning Accs.

Napkins

China

Gifts

Glassware

Carpets

Vinyl

Rugs

Doormats

Furniture

Tables

Chairs

Recliners

Beds

Z beds

Bedding

Headboards

Tracks

Poles

Blinds

Curtains

Tablemats

Tablecloths

Oil Cloth

Table Protector

Towels

Bathroom Acc.

Fablon

Rug anti creep

Net Curtains

Cushions

Fabrics

Curtain Accs.

Free measuring, free estimates and free local delivery

J. H. Donovan & Son
49 Fore St. Kingsbridge. Tel. 852342 *Ltd.*

Coast & Country Cottages

Thinking of letting your holiday home?

Discover the benefits of a truly local agency with over 400 properties in the South Hams.
Call now for a Free Brochure & Owners Guide

We are currently looking for more select properties in the Thurlestone area

Properties in and around Salcombe, Thurlestone and throughout the South Hams 01548 843773
Properties in and around Dartmouth 01803 839499

www.coastandcountry.co.uk



Judith Bentley

Hair Design

Manicure &

Pedicure

****Personal Mobile Hair Stylist****

****Experienced in all types of
Hairdressing****

Currently at Thurlstone Hotel
on Mondays
Available for rest of the week
IN YOUR OWN HOME

Tel: 01548 852243

Mob: 07971 027058

**-Curtains-
PELMETS
TIE-BACKS
CUSHION COVERS
BED COVERINGS
ALTERATIONS etc**

MANDY COLE

Telephone
01 548 531832

**TERRY REEVES
PRINTING**

20 Townsend Close
West Alvington
TQ7 3QA

****QUALITY
**SPEED
**SERVICE
**COMPETITIVE
PRICES**

Telephone
01 548 853517

**prestige
painting**

EXPERIENCED TEAM
OF LADY DECORATORS
Sarah Mimpriss

t: 01548 521301
m: 07747 772527

FULLY INSURED • TRUSTWORTHY
COMPETITIVE • RELIABLE

DIARY DATES

April		
Saturday	6 th	Beach Clean, South Milton, 10am
Monday	8 th	Parish Council Meeting, 7.30pm, Yeo Room
Wednesday	10 th	TRAMP, around Haytor (short)
Thursday	11 th	WI, Parish Hall, 2.30pm (Himalayan Motherhood)
Tuesday	16 th	TRAMP, Pym Valley with birds (long)
Tuesday	16 th	ACA AGM & Talk, Bigbury Memorial Hall, 7.00 pm
Wednesday	24 th	KDFAS, Kings Arms, 7.30pm (Huguenots of Spitalfields)
Thursday	25 th	KDFAS, Kings Arms, 10.30am (Huguenots of Spitalfields)
Thursday	25 th	TRAMP, Noss Mayo/Revelstoke (long)
Saturday	27 th	Tim Abel Concert, Parish Hall, (see advert)
Monday	29 th	Annual Parish Meeting, Yeo Room, 7.30 pm
May		
Tuesday	7 th	TRAMP, Wembury & coastal path (short)
Thursday	9 th	WI, Parish Hall, 2.30pm (annual meeting)
Saturday	11 th	Plant Sale, Parish Hall, 10.00am to noon
Monday	20 th	Annual Parish Council Meeting, Yeo Room, 7.30pm
Friday	24 th	TRAMP Slapton & Gara Mill (long)
Saturday	25 th	Arts & Crafts Show, Parish Hall, 2pm-5pm
Sunday	26 th	Arts & Crafts Show, Parish Hall, 10am-5pm
Monday	27 th	Arts & Crafts Show, Parish Hall, 10am-4pm
June		
Monday	3 rd	Parish Council Meeting, 7.30pm, Yeo Room
Tuesday	4 th	TRAMP, Bolt Head/South Sands (short)
Wednesday	12 th	TRAMP, Modbury battlefields (long)
Thursday	13 th	WI, Parish Hall, 2.30pm (Wolves of Yellowstone Park)
Friday	21 st	TRAMP, Ringmore/Aymmer Cove (short)
Wednesday	26 th	TRAMP Dittisham/Greenway (long)

VILLAGE VOICE

Your Cut Out and Keep

PARISH DIRECTORY and DIARY DATES

Village Voice is available free to permanent residents of the villages in the parish.

There is also a subscription service, which mails copies to readers at an annual cost of £12.00 for six issues. Please apply to:

Judith Reynolds, Pilgrim Cottage, Post Office Lane, Thurlestone,
Kingsbridge, Devon TQ7 3ND Telephone : 01548-560912

The magazine is entirely self-supporting and is not a charge on the parish rate. It was founded on behalf of Thurlestone Parish Council and is delighted to remain under the Council's sponsorship. This does not mean that the views and opinions expressed in these pages are the views and opinions of any member of the Parish Council, and they should only be ascribed to the authors concerned.

In Thurlestone, Village Voice is delivered by a team of volunteer helpers organised by Graham & Val Palmer. In Bantham and Buckland it is delivered by Peter Hurrell and Linda Chilcott.

DEADLINE FOR NEXT (June-July) ISSUE = 5th May 2013

Please drop any contributions marked "Village Voice" through the letterbox at 25 Mead Lane before that date (or e-mail to RbnMacd@aol.com or Vvoice@aol.com)

Advertising Rates for Village Voice - 12 months (six issues)
Whole Page - £70.00 Half Page - £50.00 Quarter Page - £30.00

PARISH

PARISH COUNCIL (Meetings take place on Mondays. See dates on Diary page overleaf)
 Chairman: Andrew Rhymis
 Parish Clerk: Philip Willard
 Parish Councilor: Ian Brindle
 Parish Councilor: Rufus Gilbert
 Members: Dale Carre
 Tony Goddard
 Nigel Hurst
 Peter Hurst
 Charles Mitchell
 Jill Hurst
 Charles Mitchell

Free Wi-Fi
 Chairman: Neil Brown
 Bookings: Judith Le Gance
 Parish Hall: Bookings in town

PARISH OF THURLESTONE SOCIETY (P.O.T.S.)
 Chairman: Chris White

ALL SAINTS CHURCH PRIEST IN CHARGE
 Rev Philip Oiler
 Office: Graham Wormald (562016) La Wode (562090)
 CHURCH WARDENS
 COFFEE TIME (Monday & Wednesday 10.30 - 11.30 am) LUNCH CLUB (Friday) 12.00 - 1.00 pm (Thursday)
 SEARCHLIGHT (Tuesday fortnightly) FILMS FOR ALL (Tuesday fortnightly) Contact Liz Webb 562090

FRIENDS OF THURLESTONE CHURCH
 Contact: Nick Marshall 562014

ALL SAINTS PRIMARY SCHOOL
 Headmaster: Philip Pridmore 562094

ADVICE CONSERVATION ASSOCIATION
 Chairman: Stuart Watts 510373

BAATHAM SAILING CLUB
 Contact: Marilyn Carter 562093

BAATHAM SURF LIFE SAVING CLUB
 Clubhouse 562447

BOWLS CLUB
 Contact: Eileen Daymont 562031

BRIDGE CLUBS 6.30 pm Wednesdays and Fridays
 Contact: Lisa Webb 562035

THURLESTONE GOLF CLUB
 General Manager: Steve Goshill 562405

TENNIS SECTION
 Chairman: Jane Smyth 561084

KEEP FIT
 Contact: Karen Lloyd 562031

TAI CHI
 Contact: Vida Alexander 561182

WOMAN'S FOOTBALL SHOW (entire)
 Contact: John Linsdale 562742

PROBUS
 Contact: Tom Trotter 562893

DIRECTORY

TRAMP (Thurstone Ramblers)
 Contact: Liz Coates 562285
 W.I. 2.30 pm Parish Hall
 Second Thursday monthly (except August)
 Contact: Pat Carre 561182

TEAMMAKERS (Computer Club)
 Contact: Michael Barnes 562112
 Wednesdays 2 - 3 pm (by phone appointment only)
 200th Macdonald 562436 Chris White 562035

TABLE TENNIS Wednesday 4.30 to 6.00 pm Parish Hall
 200th Macdonald 562436

BADMINTON Mondays 7.30 to 9.00 pm Parish Hall (Eqpt provided) Heather 562892 or Paul 562070

HEALTH CENTRES Kingsbridge 853551
 Slocroze 842284

MILK DELIVERY R. Buckner & Son 01803 632801

NEWSPAPER DELIVERY Dave & Sandra Edwards 01548 853132

VILLAGE SHOP Thurstone Village Shop
 N. T. Th. F. 8.00 am - 5.30 pm 561917
 Wednesday 8.00 am - 1.00 pm
 Saturday 8.00 am - 1.00 pm
 Sunday 8.30 am - 1.00 pm

(N.B. The 1.00 pm closing times may sometimes be extended during school holidays and at weekends)

THURLESTONE POST OFFICE
 Open: Mon, Tues, Thurs, Fri 9.00 am - 5.30 pm Wed, Sat 9.00 am - 1.00 pm
 Postal collections: 4.00 pm Monday - Friday, Noon on Saturday, No collection on Sunday 561917

NEIGHBOURHOOD WATCH Co-ordinator: Chrissie Macdonald 562892

POLICE Dave Gibson (Community Support Officer) 01803 632801
 Emergency 999 Non-emergency call 01803 632801
 Mithras users 01352 422035 Confidential information 0800 505 111

RUBBISH COLLECTION
 Monday (Blue Tins) in Bank Holiday Monday (waste) Grey wheelie bins - alternate Mondays from 8th April
 White & Blue Sack collections (recyclables) and Brown wheelie bins - alternate Mondays from 1st April

RECYCLING CENTRE (off Quarry Site, Tynes Road - Telephone 521609)
 Opening hours: Monday to Friday 8.00 am - 4.30 pm Saturday & Sunday 10.00 am - 4.30 pm

PUBLIC TRANSPORT INFORMATION LINE
 For all bus, rail, or National Express coach timetable information call TRAVELINE 0871 200 2223
 Open every day (except Christmas Day) 7.00 am to 9.00 pm
 Devonbus publications may be obtained by phoning 01352 382800 or by email to devonbus@devon.gov.uk

GARAGE (Bike Engineering) Maurice Blight / Kevin Fraile 562220

KINGSBRIDGE LIBRARY 853315
 (Modern Library from 10.30 am to 5.00 pm alternate Wednesdays from 10th April)
 South Point (Bicycle Club) 14.45 - 15.30 pm Thurstone (Parish Hall Car Park) 15.40 - 16.45 pm

Abbeyfield

Abbeyfield House Saffron Park Kingsbridge

where residents can live independent lives but with support and companionship.

A Bed-Sitting Room with Shower-Room ensuite
Waiting list applications accepted
Viewing invited

Prices on application include Central heating and Full Board provided by a Housekeeper/Cook.

Please apply for viewing to:-
Sec. Mrs E.J.Mills
01548 856976

A home, support and Companionship
for Elderly People.

GRASSHOPPER GARDEN SERVICES

FOR ALL YOUR
GARDEN MAINTENANCE
GRASS CUTTING, PRUNING,
HEDGE CUTTING, CLEARING etc

CREATIVE DESIGN AND PLANTING
OF
FLOWER BEDS, POTS AND CONTAINERS

A high standard of work guaranteed with a
personal, reliable, tidy and
knowledgeable service.



Fully Insured
17 Years
Horticultural
Experience

contact Elaine or Jeremy
01548 810235

KINGSBRIDGE EYE CARE GROUP

1, The Promenade, Kingsbridge

Tel: 01548 856854

Clinical Excellence

TIFFANY & CO. BVLGARI CHANEL

Full Eye Health Examinations

Contact Lens Specialists

Retinal Photography

OCT Screening packages

Eye Examination packages

Diabetic and Glaucoma Examinations

Luxury Designer brands

Visit: www.kingsbridgeeyecare.co.uk

Ray-Ban

Nigel Frost Optometrist
3, Chene Court,
Moulbury
Tel: 01548 830944



OAKLEY

Sallyanne Eye Care
81, Fore Street
Kingsbridge
Tel: 01548 843207

Nigel Frost (Safes) F.C. Optician
Kathryn Proctor (Safes) M.C. Optician

H. R. ADAMS

GARDEN SERVICES

HOLIDAY PROPERTY MAINTENANCE

Tree and Shrub Care
Grass Cutting
Hedge Trimming
Strimming, Pruning, Weeding

7 Parkfield
Thurlestone
Kingsbridge
Devon TQ7 3NW

Tel:
01 548
560 664

*Serving the community
for over 150 years*

Funerals can be arranged in
the comfort of your own home
or at our local office

15 Duncombe Street
KINGSBRIDGE



*because
we care*

For personal attention
Telephone

01548 852302

J & G Perrott Funeral Services

ROSSITER
Carpenter
& Joiner

1ST & 2ND FIX
BESPOKE JOINERY

ROOFING

ALL GENERAL CARPENTRY WORK

CONTACT ANDREW ON:

07811 461 053

DENTURE REPAIRS

Broken or Cracked Dentures Repaired

Teeth Refixed or Replaced

Staining Removed

Cleaning & Polishing

Local Laboratory

CDC Registered

Call

01548 561336

The Village Inn

Est. 1896

Situated in the heart of the Thurlestone Community, this 16th Century traditional pub has been in the Grose family for over 115 years.

Paul and the team always offer you a warm welcome, and we pride ourselves on using the very best of local produce to create a superb selection of freshly prepared meals daily.

Bar Open Daily

Monday – Friday

11.30am – 3.00pm

6.00pm – 11.00pm

Saturday & Sunday

11.30am – 11.00pm

(12.00pm – 10.30pm on Sunday)

Food Served Daily

Monday – Friday

12.00pm – 2.00pm

6.00pm – 9.00pm

Saturday & Sunday

12.00pm – 9.00pm

- Traditional Sunday Lunch
- Soup 'n' Sandwich - £6.95
(available Monday – Saturday Lunchtime only)
- Tea & Coffee
- Take Away Meals Available
- Local Produce
- West Country Real Ales
- Regular Entertainment
- Children Welcome
- Dogs Welcome
- Free Wi-Fi
- Ample Parking
- Minutes from the South West Coastal Path
- Summer Barbecue's
- Open All Day During School Holidays
- Special Events Catered For

Please contact Paul and the team for reservations and further information.

The Village Inn, Thurlestone, Kingsbridge, South Devon, TQ7 3NN

Telephone: 01548 563525

Email: thevillageinn@thurlestone.co.uk Website: www.thurlestone.co.uk