

VILLAGE VOICE

August - September 2022



The community magazine of Bantham, Buckland and Thurlestone



Everyone who organised events for the Jubilee weekend should be congratulated on a spectacular diary of activities which everyone thoroughly enjoyed; all your hard work was appreciated by the parish and will be talked about for a long time. The collage of photographs on the front cover will hopefully bring back happy memories for all. It was a difficult task to choose which ones to use but thank you to everyone who submitted them. We received a request to print the speech given by Martin Grose when he opened the 'street party' and are pleased to oblige.

Since our last edition we have gained four new Parish councillors; they have all kindly written an introduction to themselves to enable you to get to know them a little better.

You will also find a report on Open Gardens: thank goodness the heatwave happened after the event otherwise the article in the magazine would have been a completely different story!

We like a bit of history here at Village Voice especially articles about our lovely villages and there are two for you to enjoy in this edition; one about a shipwreck off our shores and the other about Bantham at the turn of the last century; these were sent in by new contributors, please keep them coming in.

Following the weather we've experienced recently it is difficult to imagine the autumn, but looking through the diary page there will be plenty to see and do once September arrives, with lots of old favourite events returning. After the last couple of years it is very welcome to see normality returning.

Enjoy the rest of the summer, stay safe and stay cool.

Point of Contact for Editorial:-

Graham & Barbara Smith Tel: 01548-561836

Email: grahamsmith2@btinternet.com

Post: 6, Meadcombe Road, Thurlestone, TQ7 3TB

Point of Contact for Advertising:-

Mike Bone Tel: 01548-288436

Email: mikecbone18@outlook.com

Front Cover

Photos supplied by:-

Sheila Fairley,

David Horne,

Mike Hodges,

Paul Martin &

Gillian Marshall

Deadline for articles for next issue - 16th Sept 2022

August - September 2022

41st Year of Publication

Issue No. 236

**Archived copies of Village Voice can be found on the
Parish website at www.thurlestoneparish.co.uk/village-voice**

Table of Contents

County Councillor Report
Thurlestone Village Street Party
Notes from Parish Council Mtgs
Neighbourhood Plan
Superfast Broadband
New Parish Councillors
Arts Society Poster
Bookshelf
The Marie Celeste of Bigbury Bay
Our Garden in July
Light Relief
Village News Round-Up
Parish Hall News
KATS Poster
Postbag
All Saints' Diary
All Saints' Editorial
All Saints' Calendar
Memories of Yesteryear
Thurlestone Golf/Tennis Club
School Report
Puzzle Page
Autumn Fair Poster
TRAMP Reports
Weather Wag
Thurlestone Bay Birds
Open Gardens Report
Thurlestone Moths / Th. Phone box
Tried and Tasted
Grey Matter
Extra Puzzles
Diary Dates
Contact Information
Parish Information

Editorial Team

Graham & Val Palmer
Mike & Vivien Stickland
Alison Daily

Compilers

Mike Bone
Alan Daily
Chris White

Accounts

Gavin Price

Distribution Organisers

Graham & Val Palmer
Tink Donald

Production Team

Chris White (Manager)
Maureen Baker
Karen Barker
Shirley Barnes
Ingrid French
Dave & Viv Gibby
Norma Kendall
Jo May
Wendy Neukirchen
Gareth & Linda Scott
Graham & Barbara Smith
Jane & Patrick Stanley
Maureen Stannard
Julia Thompson
Lisa White

Mail Order Copies

£18 a year, from:
Judith Reynolds
T: 01548 560912
E: judith-reynolds@tiscali.co.uk

Advertising Rates for Village Voice - 12 months (six issues)

Whole Page - £85.00 Half Page - £62.50 Quarter Page - £40.00

Delivered free to all Residents on the Electoral Roll, otherwise £1.50

YOUR COUNTY COUNCILLOR **RUFUS GILBERT'S REPORT**



As I write this article in early July in the middle of a heat wave the visitors are enjoying not just the weather and beaches but the many delights of South Hams and all it has to offer.

DCC Finances.

Not so good I'm afraid. On top of Dr Phil Norey our CEO having resigned we are having to address considerable financial strains in Children's and Adult services post the pandemic.

Devon's Economy.

Plymouth & South Devon Freeport is well underway and will bring £100 Million investment along with 3500 new jobs. Relations with SHDC and Plymouth are working well. The project involves 130 hectares of land at Langage, Oceansgate and Sherford. Why do I mention this ? Well, Thurlestone is not that far away and there could be some economic spill over such as perhaps people wishing to live in or near the parish.

Refugees & Ukrainians coming to UK.

Some of you may be sponsoring or in some way helping a Ukrainian guest. Many Ukrainians have found work locally and are proving hard working, willing and skilled. There are also approximately 400 Hong Kongers and 100 Afghans awaiting settlement.

Finally, as I write, the process has just begun of selecting a new Prime Minister. We can all only hope this has a positive outcome after recent times of uncertainty.

Roads.

Please note works have begun at Kitterford Cross North of Loddiswell on the B3196 which will be ongoing for sometime. Enjoy your summer.

Rufus

A Little Light Relief

Fred Gibbs was in his early 60's, retired and had started a second career in catering. However, he just couldn't seem to get to work on time. Every day he was 2, 3, or 5 minutes late. However, he was a good worker and really clever, so the owner was in a quandary about how to deal with it. Finally, one day he called Fred into the office for a talk.

"Fred, I have to tell you, I like your work ethic, you do a top-class job, but you're being late so often it is quite a worry."

"Yes, I realise that, sir, and I am working on it," replied Fred.

"I'm pleased to hear that; you are a team player. It's odd though, you're coming in late. I know you're retired from the Royal Navy. What did they say if you came in late there?"

They said, "Good morning, Admiral".

Thurlestone Village Street Party

Opening Words

Good afternoon everybody.

Jack Rhymes has invited me, for reasons which remain obscure, to say a few words at the start of today's "jubilations", as the Village Voice has so deftly described our celebrations.

There are few occasions when we have the opportunity, and good reason, for our three communities of Bantham, Buckland and Thurlestone to come together in this way. These events do not just happen, they require imagination, planning and some heavy lifting. I would like to thank on your behalf Jack, the Parish Council, various village institutions and the host of volunteer helpers who have put this weekend's festivities together, from the lighting of the Beacon on Thursday to this afternoon's activities and entertainments. A fine achievement.



We are gathered here today to celebrate not merely a date, the 70th Anniversary of our Queen's Accession to the Throne, but a lifetime of selfless service to our nation by a remarkable lady. She has been a beacon of stability in times of inordinate change, social, political and economic

Her commitment to duty has set an example reminding us of our shared values which provide the glue which holds our communities and nation together. Values amongst others, of trust, truth, loyalty and consideration for others. These values under her reign have spread through the Commonwealth of Nations to much of the world and are vital in facilitating communication, understanding and the avoidance of conflict.

Years ago, I had an example of this when I was working in a paper mill in Argentina. I was called unexpectedly to a meeting in Buenos Aires some 50 miles distant. I quickly jumped into my car and left the mill. About half way to BA I realized that I was short on fuel so stopped at a filling station and filled the tank. When I got to the till to pay, I found that I did not have any cash on me. I apologised to the cashier and said in my appalling Spanish "Senor I will be returning this way this afternoon and will pay on my way back. I will leave my wrist watch with you as surety." He replied " Senor, no es necesario. Usted es Ingles" (That is not necessary, you are English). That made me very proud of the reputation of my nation and I have remembered it all my life.

I would like to finish by quoting President Obama's Message to the Queen which I read yesterday.

"Your steadfast Stewardship of one of our most important democracies has made the world a safer and more prosperous place through war and peace, times of adversity and times of prosperity. Your life has been a gift not just to the United Kingdom but to the World".

That says it all, I think.

Please be upstanding and raise your glasses for the Loyal Toast to Her Majesty the Queen.

Now will everybody, including those without a glass and all children give Three Cheers for Her Majesty. (Hip Hip etc)

Martyn Grose

HLC HOLSWORTHY TRAVEL LTD

- Independently owned Devonian agency with over 35 years trading experience.
- Catering for all your travel requirements from UK breaks to Worldwide itineraries
- Offering a personal honest service

We are a mere phone call, e-mail or zoom meeting away.

Please feel free to contact us to discuss your next holiday.

Tel – 01409 253962

E-mail – sales@holsworthytravel.co.uk

Bank House, Holsworthy, EX22 6DY

Follow us on Facebook

SUP / AWAY

SOUTH DEVON PADDLEBOARD HIRE

**INFLATABLE PADDLE BOARD HIRE
BASED 1/2 MILE FROM BANTHAM
DELIVERY/COLLECTION AVAILABLE
HIRE, LESSONS AND TOURS
COMPETITIVELY PRICED**



07838 688038

WWW.SUP-AWAY.COM



KINGSBRIDGE HIRE

- Hire
- Sales
- Repairs

Telephone: 01548 853679

www.kingsbridgehire.com

KINGSBRIDGE
GARDEN MACHINERY

WE SELL, SERVICE & REPAIR
ALL TYPES OF GARDEN MACHINERY

Telephone: 01548 853679



**Hire, Sales & Repairs of Garden Machinery,
Power Tools and Construction Equipment**

Your local dealer for...

STIHL



COUNTAX
Britain's Best Selling Garden Tractors

ATCO



HAYTER
MAKERS OF POWER TOOLS

...plus many more

Units 4-7, Torr Quarry, Kingsbridge TQ9 7FA

Tel: 01548 853679

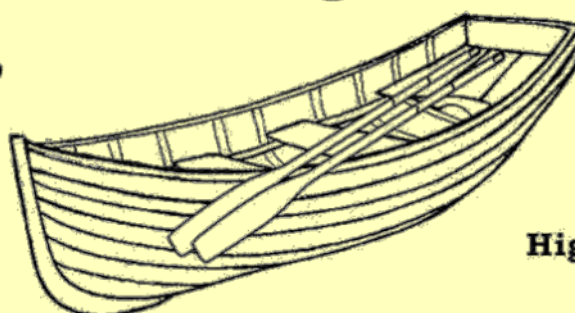
www.kingsbridgehire.com

C M DAWES

The Bantham Boatyard

**Boat Building
Restoration
Launch and Recovery
Storage**

**The Old Workshop
Parkfield
Thurlestone**



**The Quarry
Higher Aunemouth
Bantham**

01548 714347
bantham.harbour@yahoo.co.uk

YOGA

with Donna



MERRIFIELD HOUSE YOGA STUDIO

Just off Bantham Cross roundabout

Monday & Wednesday - 18:00 & 19:30pm

Tuesday & Friday - 09:30am

Livestream and On-Demand also available

BEACH YOGA & SUP YOGA

(Stand Up Paddle Board)

Weekly classes - Easter to September

Kingsbridge, Hope Cove, Bantham, Thurlestone

Subject to weather - See website for dates



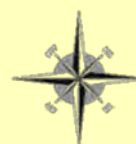
BOOKINGS ESSENTIAL

"Calming encouraging and inclusive"

CONTACT DONNA

TEL: 07941 508 004

WWW.SIMPLYSOULFUL.CO.UK



COMPASS QUAY COASTAL HOLIDAYS

Your trusted holiday agency

in the South Hams



**Holiday Makers - an exciting portfolio
of coastal properties for your escape away**



**Home Owners - Stress free rentals
with a personal service**

www.compassquaycoastalholidays.uk

NOTES FROM PARISH COUNCIL MEETINGS

The most recent Parish Council meetings are summarised below. The detailed minutes can be seen online at www.thurlestoneparish.co.uk

Meeting held on Monday 6th June 2022 at Thurlestone Parish Hall

Present: Cllrs Jill Munn (Chairman), Sue Crowther and Sian Williams.
In Attendance: Kathy Harrod (Parish Clerk), District Cllr Judy Pearce and 14 members of the public
Apologies: County Cllr Rufus Gilbert and District Cllr Mark Long

Open Forum

Residents raised the following matters: (a) Why has the Bantham Estate submitted one planning application as there are four large areas covered? (b) Pre-application drawings for Aunecliffe, Bantham, were shown to Councillors by the owners' planning consultant. (c) The situation regarding the brown bins needs to be resolved and the Council was asked to push for a resolution. (d) Jack Rhymes, the Jubilee Team and Parish Council were congratulated for the outstanding street party and entertainments over the Queen's Platinum Jubilee weekend. (e) The Council was asked to defer considering the Bantham Estate application until after the election, so there would be a full complement of Councillors. (f) Chris White, Parish Broadband Champion, read out his paper about Broadband provision in the Parish. (g) Concerns were raised about the need to run electricity up to the proposed electric car charging points in the latest Bantham Estate planning application.

Clerk's Report

The election in respect of the four Councillor vacancies would take place on 23rd June 2022 at a cost of around £2000 to be met by the Parish Council. An internal audit of the Council's accounts has been undertaken and the Council's pages on the parish website are in the course of being updated. Bantham Estate have advised there will be a shoot this year, but there are no further details at this time.

Planning Matters

Councillors supported the following applications:

1139/22/HHO, The Meadows, Court Park, Thurlestone. Conservatory roof replacement.
0192/22/HHO, The Pillars, Eddystone Road, Thurlestone. Ground & lower ground floor extension/alterations.
0942/22/HHO, Thurle House, Warren Road, Thurlestone. Demolition of existing porch and reconstruction to include porch, extended utility room and WC/shower room with bay window.
1633/22/FUL, 21 Eddystone Rd, Thurlestone. Demolition of existing house and garage and erection of replacement house & garage with associated landscaping works.
1689/22/VAR, Plot 29, Highfield, Eddystone Road, Thurlestone. Application for variation of condition 1 (approved drawings), 5 (PV panel installation) & 8 (stonework detail) of planning consent 3632/19/ARM (30/6).
Councillors objected to the following application:
1441/22/FUL, 29 Eddystone Road, Thurlestone. Temporary use of existing garage as accommodation for two years and associated extensions and alterations (retrospective).
1610/22/HHO, 31 Court Park, Thurlestone. Proposed extensions and general refurbishment.
Decisions: SHDC granted Conditional Approval for: 1116/22/HHO, 6 Meadfoot, Thurlestone; and 0257/22/VAR, Units 1 & 2 Whimbrels Edge, Thurlestone.

Parish Matters

Cllr Munn thanked Jack Rhymes and the team of volunteers for all the events organised for the Queen's Platinum Jubilee which had been a huge success.

County and District Councillors' Reports

County Cllr Rufus Gilbert provided detailed information about the Ukrainian guests who had already arrived and those expected. District Cllrs Pearce and Long reported SHDC are inspecting premises, processing monies out to hosts and visitors, and addressing any issues that arise. Council tax rebates continue but 25% of residents do not pay via direct debit and have not all been in contact to claim their refunds. On brown bin collection, the service has worsened over the month, FCC are sending out fewer brown bin rounds. All missed collections should be reported.

Meeting held on Tuesday 28th June 2022 at Thurlestone Parish Hall

Present: Cllrs Jill Munn (Chairman), Sue Crowther, Paul Gunning, Rosa Lewis, Adam Ryan-Carter, Gill Stone and Sian Williams.

In Attendance: Kathy Harrod (Parish Clerk), District Cllr Mark Long and 12 members of the public

Apologies: County Cllr Rufus Gilbert and District Cllr Judy Pearce

Open Forum

Residents raised the following matters: (a) The previous Council was thanked for the Jubilee celebrations. (b) Concerns were raised about the state of the road outside the Old Chapel in West Buckland. It has been reported to DCC Highways but will be raised again and with Cllr Gilbert. (c) The lane in front of 2 Woodlands in West Buckland is very narrow with a tight corner by the outhouse; the outhouse and patio wall are often hit by vehicles. This too will be reported to Highways. (d) The public footpath (FP8) leading to North Upton from West Buckland is overgrown and needs to be cut. The Clerk will contact the landowner.

The meeting convened and the Chairman welcomed the four new Councillors elected on 23rd June who signed their Acceptance of Office forms.

Clerks Report

The website continues to be updated with new documentation to ensure the Council is compliant with new legislation. A copy of the internal audit document will be posted to the website. Cllrs Pearce and Long were thanked for their recent support helping to fund the Jubilee celebrations.

Planning and Licensing Matters

Councillors supported the following applications:

1657/22/VAR, Buckland Park Farmhouse, Bantham. Application for variation of condition 2 (ancillary accommodation) of planning consent 55/0702/07/F.

1520/22/TPO, Buckland Park, Bantham, Tree Works. Split response.

Councillors objected to the following applications:

0915/22/FUL, Land off Bantham Beach Road. Erection of replacement beach shower/toilet block, replacement village

sewage treatment plant, new residents/mooring holders car park and new parking, ANPR system and associated signage on the beach road and car park.

1420/22/FUL, Upton Grange, Bantham. Side & rear extensions to existing dwelling and extension of residential curtilage (part retrospective)

Decisions: SHDC granted Conditional Approval for: 1139/22/HHO, The Meadows, Court Park, Thurlestone; 0942/22/HHO, Thurle House, Warren Road, Thurlestone; 1100/22/HHO, Byeways, Warren Road, Thurlestone; and 1338/22/HHO & 1339/22/LBC, Worthy, Bantham.

Parish Matters

The gritter and salt will be stored at the Golf Club in the short term. The gritter will be assessed for safety/roadworthiness and a long-term plan will be agreed. The costs of the public toilets are paid by council tax payers and expected to increase. The Golf Club has increased use of the toilets through offering additional beach parking on the land opposite and Rockbox are renting land to operate a food/drink business with a number of music events. The current annual cost for the facility is budgeted at £6,000 but will probably be exceeded 2022/23. Councillors resolved to request a contribution from the Golf Club. The previous Council had considered taking over ownership of the Artisan Hut from the Golf Club but due to strong concerns regarding the condition of the building it was resolved this would not proceed.

County and District Councillors' Reports

DCC Chief Executive Phil Norrey has retired and will shortly be replaced. Bantham Vineyard applications 3026/21/FUL & 3027/21/FUL will be considered at Development Management Committee on Wednesday 27th July. There are currently 120 Ukrainian guests residing in 51 properties across the South Hams and 209 are expected – 120 adults and 89 children. The four new Parish Councillors were welcomed and the electorate was congratulated on the 40% turnout.

The next meeting of the Parish Council will be on Monday 5th September 2022 in the Parish Hall.

Thurlestone Parish Council

Neighbourhood Plan Update

by Judy Pearce

This month, July, as I write, sees the fourth anniversary of the Thurlestone Parish Neighbourhood Plan. As Lead Member for Planning at South Hams I see a number of neighbourhood plans coming forward for referendum. I can honestly say that very few others achieved the turn out at referendum and the approval rating ours did, and what's far more to the point, very few, if any, are as effective as ours is. The Parish Council is to be congratulated on its forensic use of the plan and its policies when formulating responses to planning applications in the parish. They are right not to spend too much time on the Plymouth and South Devon Local Plan policies because the council officers are well acquainted with these, but always welcome a steer on neighbourhood plan policies because there are now so many different neighbourhood plans in the District – sixteen by my reckoning.

Not long after the Neighbourhood Plan was 'made' by referendum, the Plymouth and South West Devon Local Plan was adopted in March 2019. The combination of the two has made planning outcomes more positive and secure in the parish. Where there is an occasional upset is when there is no obvious policy or reason for refusal but where the 'planning balance' comes into play. This is often described as the 'black art' side of planning, but it is where differences of opinion can arise and probably where approval or refusal could both be valid options. Thus, occasionally, there are slight differences of opinion between the parish and the council, but on the whole the system is working really well.

I thought therefore it could be opportune to outline a few aspects of the Local Plan which are working well for Thurlestone too.

Undoubtedly the 'Undeveloped Coast' policy DEV24 is used often. This prevents development which can be located elsewhere from happening in the immediate surroundings of the built up areas of the parish, or along the coast. There are obvious exceptions, such as affordable housing and the expansion of local businesses.

Policy DEV23, which deals with landscape character, seeks to protect scenic and visual quality, especially the erosion of relative tranquility and intrinsically dark landscapes. This is why you may see excessive glazing as a reason for refusal, as it is impossible to condition blinds being used at night.

Probably the most far-reaching policy will be DEV32 'Plus'. When the Plan was put together, the council had not declared a Climate Change and Biodiversity Emergency, though equally, at the time, this policy, which deals with delivering low carbon development, was regarded as one of the most forward looking of its kind. Things, however, have moved on apace since then. What is extremely wasteful on resources is knocking down a house which is only several decades old to build a new one just because you want to or you can afford to. There have been some really good updates and remodels of properties in the parish that disprove this and show that a refurb is a much more proportionate response. The three local authorities which partner in the Joint Local Plan, propose therefore to tighten up on this policy considerably and make it much harder to demolish and rebuild. We shall be considering the consultation responses to our proposals very soon, and also a proposal for an Article 4 Direction in

the area, which would mean that planning permission would be required to demolish a property – not that this would necessarily be prevented, but that a proven need must be demonstrated. It is hoped that the DEV32 'Plus' more stringent carbon use proposals will be adopted by the three councils in the early Autumn.

In the towns, we are achieving at least 30% affordable housing on larger sites, as this was a condition of acceptance for allocations in the Local Plan. We are therefore meeting and even well overstepping our promise of at least one hundred new affordable houses every year. ('Affordable' here being the government's definition rather than local reality). At South Hams, we shall continue to do whatever it takes to make housing a more affordable reality for local people.

Superfast Broadband

Your Parish Needs You!



The article in the last Edition, was written in the light of the best information available at the time. But the Superfast Broadband situation is changing as fast as, well, Superfast broadband ! It is now clear that Airband are still looking into the possibility of a large Commercial project in the Parish (i.e. at their own expense, and in addition to the project paid for by CDS). This is very good news for those that would like to join the Fibre revolution, but were left out of the CDS contract. However, it is not yet certain whether this Commercial project will proceed, and this is where you come in.

In the last Edition there was a link to a page on the Parish website, where you could find a list of all the properties that were included in the CDS contract. This time, you will find below, a link to another page on the Parish website, where you will find a list of all the properties that are included in the potential Commercial project. If you are interested in the potential of Fibre To The Premises (FTTP) Broadband then it is important that you register that interest on Airband's website - the more people that register an interest, the more likely it is that the project will proceed.

Remember, this isn't about "well I get a fast enough service for my needs already". It's about the fact that if your property isn't connected by FTTP, then it's connected by an ancient BT copper cable, which is well past its sell by date, and frankly, life expired. The BT copper cable will have to be replaced at some point, but who knows when that will be. A top class Internet connection is already one of the major selling points for a house, so we mustn't be left behind in the Rural desert. We have a chance to rectify that, by acting now.

To see if you're on the list of properties for the Commercial project, go to www.thurlestoneparish.co.uk/superfast-broadband

To register your interest in FTTP, go to <https://www.airband.co.uk/>, enter your Postcode into the Check Availability box, and follow the instructions.

Chris White Thurlestone Parish Broadband Champion



For Your Eyes Only

- Clinical Excellence-
- Retinal Photography-
- OCT Screenings-
- Fabulous Specs-
- Gorgeous Sunglasses-
- Contact Lenses-

Fore Street, Kingsbridge TQ7 1AB

NHS & Private Patients welcome
Tel: 01548 852636

www.devoneyes.co.uk

info@devoneyes.co.uk

High quality ethical eye care for the whole family

Luke Cumberlandidge Bespoke

spaces • joinery • furniture



- kitchens
- cabinetry
- joinery
- bespoke storage

e: info@lukecumberlandidge.co.uk

m: 07966 504 438

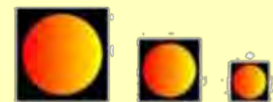
w: www.lukecumberlandidge.co.uk

[@lukecumberlandidgebespokejoinery](https://www.linkedin.com/company/lukecumberlandidgebespokejoinery)

Welcome to Woodleigh Wood

QUALITY FIREWOOD – Dry seasoned & Part seasoned

We are a local established family business, situated right here near Woodleigh in the heart of the South Hams.



Kingsbridge, Totnes
& Ivybridge



With oil prices up 400% in 12 months, more people are moving away from harmful fossil fuels and using a Woodburner instead.

Air Quality Regulations 2020: From 1st May 2022 only certified 'Ready to burn' firewood can legally be sold in 1m3 quantities and below.

Please visit our Website: Woodleighwood.co.uk

Please contact us:

Kingsbridge 01548 550 000

Totnes 01803 640 444

Ivybridge 01752 477 002

Mobile / Text 07808 882 623

Email: wood@woodleighwood.co.uk



Free delivery only while stocks last:

1 m3	'READY TO BURN'	£ 140
2 m3	DRY SEASONED	£ 240
3 m3	DRY SEASONED	£ 350
4 m3	DRY SEASONED	£ 450

A.J.HURRELL

Plumbing & Heating

Installations, Maintenance & Repairs

The Bathroom Specialists

Bathrooms - Wetrooms - Showers - Kitchens - Tiling

*“serving the local community
for 30 years”*

Email: hurrell19@btinternet.com

Tel: 01548 854411

Mob: 07970 970387



Abbeyfield House, Kingsbridge

Offers supported Housing for independent living for people aged over 55. Located close to the town centre, Abbeyfield House has 11 ensuite flats providing a friendly family atmosphere.

Charges are from £300 per week to include breakfast provisions along with home cooked, nutritious, lunches and evening meals served in the communal dining room, 7 days a week. The House also benefits from a 24 hour emergency alarm system.

We also have a vacancy for a House Manager and a cook.

For further information or to arrange a viewing please contact the Manager at:

**Abbeyfield House
Saffron Park, Kingsbridge,
Devon, TQ7 1RL**

Tel: 01548 854090

email: kingsbridge@abbeyfieldsws.org

Registered Society No.23413R

Avon products online here!

www.avon-book.com

Direct delivery to your door

Free & next day delivery options

Hand sanitiser £2 & £3.50

Hand wash from £1

Anew Vitamin C Radiance Serum

Vegan Distillery Range

Skin so Soft Original Dry Oil Spray

Hand creams £2

**Text 'BOOK' to 07887 851 508
to receive the latest digital brochure**

Introducing Our New Parish Councillors

Paul Gunning

I have lived in the Parish since 1979, having been born and brought up in the area. I am a third-generation resident, with both my grandparents and parents having lived in Bantham. I work locally for a busy Architectural Practice in Kingsbridge, whilst my wife teaches at Ivybridge CC and is a local artist. My three children all go to school in the South Hams, with two of them attending Thurlestone All Saints Primary, and the oldest having just completed her GCSE exams at Kingsbridge CC.



Previously I have volunteered and worked many years for the RNLI. I was involved in the training of and overseeing of the day-to-day operations of the Beach Lifeguard service in the South Hams & Southeast Cornwall. A very rewarding role, which allowed me to work in some very beautiful and sometimes challenging environments.

I have always had a great love of the sea and coastline, with a passion for water sports. Growing up and living in the Parish meant there was always the opportunity to enjoy and explore our coastal community. You will often see myself and the family on the Parish footpaths walking (or hanging on to!) our 7-month-old Dalmation puppy. Hope to see you all out and about this summer, all the best.

Rosa Lewis

I was born and brought up in London until the early death of my father when I was sent to boarding school. I left school early at 16 years old and went into the fashion industry in London as a trainee for Peter Robinson, which was owned then by one Raymond Burton. Yes, *the* Burton of Burton Menswear. Phillip Green took over this business many years later!



They established a Graduate trainee scheme and I was invited to join this even though the fashion industry didn't expect or indeed have university courses at the time.

I loved my work and after 8 years at Peter Robinson's I joined another iconic fashion brand, Miss Selfridge, in Duke Street, London as their Buying and Merchandise Director. It was a job that involved me travelling all over the world.

I finally left the fashion industry to work with my husband in his property company in the Cotswolds. My role was to work with architects/designers both externally and internally on mostly Grade 2 developments.

In 1990 I started my own fashion business and opened 17 shops in the affluent market towns mostly along the M4 corridor. This was taken over in 2002 and is now owned and run by my step daughter.

Now fully retired I moved to Devon and lived in Salcombe and West Buckland before settling in my cottage in the heart of Thurlestone. I care deeply about the area I live in and all it represents to those of us who live here and visit. When I was younger, I was a keen horsewoman and now greatly enjoy walking, The Book Club, theatre and spending time with friends.

Adam Ryan-Carter

I have been a musician and music producer since I was 18 and have been lucky to spend my working life doing something I love. I lived in Manchester until 8 years ago when we finally realised our dream and moved to West Buckland. We would spend every summer at Links Court and High Corner in Thurlestone hoping to find a way out of the city and that became a reality when I was able to turn the ruins of 'the Piggery' in the front garden of our current home into a small studio where I continue to work.



My wife and two teenagers were keen to accommodate my mid-life surfing crisis and they enjoyed their time at KCC whilst my wife taught at Thurlestone Primary School. She devised the business survey and heritage trail for the Neighbourhood Plan whilst acting and directing in various productions at Kingsbridge Amateur Dramatics Society. I am a member of the Bantham Sailing committee and I'm often found sailing in the estuary. I'd like to think that in our short time here we have immersed ourselves in the community.

Gill Stone

Born in Wiltshire I moved to London in my early twenties to work as a buyer for Marks and Spencer during which time I was lucky enough to travel the world. After 10 years I left to start my own retail outlet returning to Wiltshire to open a kitchen shop with demonstration theatre – as I loved cooking. I managed to encourage some of the top chefs of the day to come and demonstrate at my shop, and during this time met two very important people. David Stone who was to change the direction of my life completely by marrying me! And Lesley Waters one of the chefs who demonstrated for me and who taught me how to really love food. Now good friends we joined forces and created our Event Company which we ran together for several years.



David grew up in Devon and through him I came to know and love it as he did. We decided to move back. We finally found Thurlestone Parish which we fell in love with and were lucky enough to find 'Quayle' an old cedar house in Bantham. It had to be rebuilt...which we literally did ourselves with occasional help from two local carpenters, now our friends. Thankfully as a keen sailor David had built wooden dinghies and knew a bit about wood. I learnt so much being hands-on. It was so interesting and I gained a really good knowledge of the planning process, as well as how to build a house. That was 18 years ago.

I love the theatre, gardening, walking the dogs, sailing, riding my electric bike which has rekindled my love of cycling and you may see me peddling around on it, or driving my old 1964 Fiat 500 (probably the smallest car in the world) which helps me navigate the lanes in summer. I care deeply about retaining the natural beauty of this place. Once it's gone it's gone.

I am grateful to those who voted for me to be a Parish Councillor. We have a great community here and I will do my best to represent the Parish. If there is anything you want to discuss you can contact me at cllrstone@icloud.com.

Martin Pears Engineering Ltd
Agricultural Supplies

**South Devon's Complete
Countryside Supplier**

Not just for farmers, our country store is open to all!
We have everything you need, from clothing and footwear,
to bedding, feed and supplies for pets, poultry and equine.

Farm Animal Feed
Equestrian Feed, Bedding & Supplies
Pet Supplies
New & Used Agricultural Machinery
ATVs & UTVs
Compact Tractors
Large Trailer Range
Garden Machinery
Repairs, Servicing & Parts
3,500+ Products Available in Store

Opening Times	
Monday-Friday	08:00-17:00
Saturday	08:00-13:00

☎ 01548 521429 ✉ info@mpearsengineering.co.uk

www.mpearsengineering.co.uk

Three Corners, Halwell, Totnes, Devon, TQ9 7JE



START POINT
— LAW LIMITED —

**Professional, friendly &
affordable legal advice**



Solicitor Beccy Bristow specialises in:

Lifetime Planning
(including Wills & Powers of Attorney)

Estate Administration

T: 01548 288008 E: info@startpointlaw.co.uk
57 Fore Street, Kingsbridge, TQ7 1PG
www.startpointlaw.co.uk



Your free time is precious! We allow you to make the most of it!

We are a family run team here to take the hassle out of running a second property or your holiday
in the South West with a bespoke, personalised service to attend to your every need.

Property Management

- Key holding
- Holiday Let Changeovers
- Home checks
- Manage home improvements
- Home moves
- Gardening
- Boat and car maintenance
- Cleaning
- Home ready for return and closed down when left.

www.swcoastalconcierge.com

Holiday Concierge

- Restaurant booking
- Private chefs
- Event and party planning
- Babysitters
- Boat hire
- Transportation
- Days out
- 24/7 chalet style host experience!

T: 07526 430051
E: jolly@swcoastalconcierge.com



A.J. Gibbons

COAL MERCHANT & CHIMNEY SWEEPS

A CLEAN CHIMNEY IS A SAFE CHIMNEY

**Solid Fuel, Bottled Gas, Kiln Dried Logs, Fire Sticks, Etc
Chimney Sweeping Now Available**



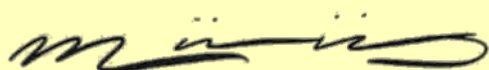
**House coal still available
from approved Coal
Merchants only. Call us
for a delivery on:**

Tel: 01626 834449

Open 6 Days a Week



***A.J. Gibbons, Unit 2, Blue Waters Ind Est,
Off Pottery Road, Bovey Tracey***



**ORIGINAL ART
FOR ORIGINAL INTERIORS**

- Online Gallery
- Personal Art Advisory
- On Site / At Home Consultations
- Sourcing & Commissioning Original Works
- Full Delivery & Installation Service

We understand design and how to compliment unique interiors with original art. Call us for a personal consultation or visit our online gallery for inspiration from some of the artists and makers we work with. Help your space tell its story...

07791 697 477

www.studiomuus.uk



Including -

- Stone Walling
- Driveways
- Retaining Walls
- Patios & Paths
- Groundworks
- Gates
- Drainage & Irrigation
- Fencing & Decking etc

Family Business Since 1976
Company No.3942610

Competitive Quotes Given, Full Insurance

Gatcombe Mill - Littlehempston - Totnes - TQ9 6LW

Office: Tel- 01803 864 871

Email: enquiries@afbrown-sons.co.uk

Web: www.afbrown-sons.co.uk



Architecture + photography = Art



**A talk by Brian Statar
September 28th
2 for 2.30pm**



**Venue:
Methodist Church
100, Fore Street, Kingsbridge, TQ7 1AW**

Visitors welcome - for a £10 donation or become a member for £50 per year which includes 10 lectures, a magazine, self funding outings and a Christmas special.

Zoom link call 01548 532850 for a connection (£8 donation)

Charity number 1158965

BOOKSHELF

Under An English Heaven by Robert Radcliffe

This novel had me under its spell from the beginning, and proved a welcome distraction from caring for a sick husband. It tells the story of a village in Suffolk and an American bomber crew stationed there in 1943. The stories interwoven into the tale – Billy, the evacuee who loves everything about the base, Heather, the schoolteacher and the wife of a soldier missing in Burma, the couple who took Billy in – are all part of this lovely book. Bicycles play a bit part too! Without thinking, I was immersed in that period, so cleverly is it evoked by the author.

These crews were flying daylight raids over Germany with not much air cover and plenty of enemy resistance. The descriptions of the flights themselves are terrific, but terrifying, and the author brilliantly conveys the urgency of the airbase preparing for action. These were such young men, far from home and when they do get a pass, they go into London not really knowing what they want to do or see – although they do 'do and see'.

The author weaves the stories of the other characters in between the actions of the crew very skilfully, so you are never bored, or skipping bits. I loved it all!

Some years ago, my husband and I visited an airbase in Bardney, Lincolnshire, from where his uncle flew bombers during the war and although that particular one was still intact with all its memories (it was being used by a model aeroplane club), I thought it a shame that more control towers were not saved as a memorial to all those young brave men.

Carolyn Taylor

The Marie Celeste of Bigbury Bay

By Henry Wainwright

When the residents of Thurlestone awoke on the morning of Friday 7 May 1908 they were surprised to see a brigantine, the Crossowen, in full sail aground on Yarmer Sands. They were even more surprised when they managed to get aboard the ship that appeared to be fully functional, and yet the lifeboat was missing and the boat was deserted. Was this a local re-run of the earlier mystery of the Mary Celeste.



The arrival of the deserted Crossowen on Thurlestone beach in 1908



The American brigantine Mary Celeste

In 1872 the Mary Celeste, an American brigantine was found adrift and deserted in the Atlantic Ocean off the Azores Islands. Her lifeboat was also missing along with the crew. The mystery of the Mary Celeste has never been solved though there are countless theories. The story of the Mary Celeste would have probably been confined to the history books if it was not for Arthur Conan Doyle and his short story "J. Habakuk Jephson's Statement" published in 1884.

The short story is about a survivor of the Marie Celeste, a fictionalised version of the Mary Celeste, who writes a testimony in the first person. No one did survive the Mary Celeste. In addition, Conan Doyle changed the name and so the name the Marie Celeste has moved into popular culture and probably better known than the Mary Celeste.

For the Crossowen there was also an unsolved mystery. On the previous night there had been a thick fog despite a strong south-westerly gale. Villagers had heard gunfire, which could have been distress signals but no guns or canon were found on board the Crossowen. Eventually when the coastguards managed to board the Crossowen there were signs that the crew had left in a hurry. Over the next few days, the bodies of the crew were recovered from Bantham beach and the captain's body found at Cockleridge in the river Avon. In his pocket were all the ship's papers. The Crossowen was badly holed and was a total wreck within two weeks of first hitting the beach. At the coroner's enquiry, held in the Village Inn at Bantham (now the Sloop Inn), the coroner found it inexplicable that the captain had not used his foghorn that was still in his cabin. The coroner returned a verdict of accidental drowning.



The Crossowen after boarding with her sails taken down



The gravestone of Captain Hitchens which lies next to the gravestone of his crew in Thurlestone churchyard

As for the cause of the tragedy, the popular theory was that the Crossowen hit rocks on the edge of Burgh Island. Thinking the ship was doomed, the captain and crew took to the lifeboat and rowed towards the sound of breakers to find a beach on which to land. Unfortunately, the dangerous breakers at the mouth of the Avon estuary were their demise when the lifeboat overturned. With the rising tide, a crewless Crossowen became free of the rocks and sailed onto Thurlestone beach. Today the only sign of this tragedy are the gravestones of the captain and his crew in Thurlestone churchyard.



South Devon's Lawn Treatment Specialists

**PROVIDING TREATMENT PROGRAMMES
FOR FERTILISER, WEED & MOSS CONTROL**

SPECIAL OFFER

**20% DISCOUNT ON ANY SINGLE
TREATMENT PRICE OR 2 TREATMENTS
FOR THE PRICE OF 1 WHEN TAKING
UP ANY ANNUAL PROGRAMME.**

**Call now for our no-obligation
FREE Lawn Health Check &
treatment recommendations**

**CALL Jim on 07702 244 134 or visit
www.greenheartlawncare.co.uk**

Mounts Quarry Supplies

The Mounts · East Allington



Peat Free Compost

Improves the fertility of the soil,
drainage and soil structure.

Timber Products

Sleepers, Posts, Rails,
Stakes, Feather Edge, Kindling

Available for delivery or collection.

07734694967

www.mountsquarrysupplies.co.uk

KINGSBRIDGE FUNERAL DIRECTORS LTD.

**"The Only Independent Family Funeral Directors in Kingsbridge
Providing a 24 hour personal and professional caring
funeral service for the families of The South Hams"**

with ADRIAN MUNDY MONUMENTAL MASON
'For all your memorial requirements'

**DEVON SQUARE VIEW, LOWER UNION ROAD,
KINGSBRIDGE, SOUTH DEVON TQ7 1EF.
01548 856340 (24 hours)**

**"A local independent family business,
serving the local community for over 20 years"**



Winter **Fuel**Store

CALOR GAS STOCKIST
Kiln Dried Birch Logs
Smokeless Fuels
Eco Briquettes

Kindling & Firelighters

**Also stocking camping and
caravanning supplies including
Charcoal for BBQ's**

Collection Only

01548 852723 / 07968 222008

Parkland, Kingsbridge, TQ7 4AF

info@winterfuelstore.co.uk

www.winterfuelstore.co.uk



CALOR

Our Garden in July

by Sue Dwyer

After Open Gardens we went away for a short break to North Devon visiting several NT gardens as well as the RHS garden Rosemoor. I must say that I was shocked at how the wonderful walled kitchen gardens at Knightshayes and Arlington Court, that had always taken my breath away have deteriorated due to the fact volunteers have not come back following Covid. The gardens have been left and are full of weeds. Some beds are growing green manure and the whole area looked unkempt. Several people at Open Gardens had mentioned how National Trust Gardens were not as well-kept and I saw how true this was. Rosemoor however was wonderfully well maintained and at this time of year the displays of roses are breath taking.

Visiting gardens gives me ideas. I grew Monarda several years ago and dismissed this



Monarda

as not worth growing as it made no impact in the borders. However, in the hot garden at Rosemoor there was an orangey red version, much taller than the variety I had grown. This was link-staked into a clump which looked spectacular. So having

dismissed this plant, seeing Monarda again in a different format means I can just see it at the back of our main border in the garden.

Visiting Castle Drogo (well worthwhile) I photographed a plant in one of the borders as I was intrigued by the foliage. There were no flowers, but the ovate leaf was mid-green and the back deep purple. I showed this to one of the gardeners as there was no label. She did not know but suggested I send the photo to Askthecastledrogogardener@nationaltrust.org.uk and sure enough a few days later I received a reply. He said this was an Impatiens but did not know the name so recommended another very similar which I could obtain. Another service from the National Trust. Whether they have this at every venue I have yet to find out but taking a photo and immediately sending it to the RHS, National Trust or other organisation to identify is an exciting facility and once there is a computer identification programme set up then it could be instant.

Every morning, rain or shine when I return from dog walking, I walk around the garden in a precise order - back of each long border, across the bottom and then front of each

finishing across the top plus patio area. By doing this I can see if anything has changed, or more importantly anything requires immediate action. Some areas need much more attention than others and this morning routine allows me to always be on top of events such as plants that need staking. This should have been done but perhaps an easterly wind has damaged a plant and walking the garden helps me to plan my work for the day.

We have a very small patio in-front of my craft room where there is a narrow flower bed around the rim. There is very little soil and I do try and keep this looking colourful especially as Declan looks out onto the area from the desk in his study. In the spring miniature daffodils are fine and at this time of year Aubretias have finished flowering. Small annual begonias survive in the dry conditions but what else? Last year I bought an Erodium "Bishops Form" which has thrived. This is a storksbill. There are many species of which about 25 are commonly available. They require well drained soil and full sun. They also thrive in terracotta pots, troughs and rock gardens. The small 5 cm diameter plant I bought last year is now about 25 cm in diameter and has formed a dense tidy dome of green leaves covered in little pink flowers. They flower for most of the spring/summer and bees love them. They survive hard winters as long as they do not get waterlogged. I bought a couple earlier this year and cuttings taken in the early spring are supposed to be easy so I will have a go. I also purchased a couple of Lewisia's which have produced several crops of lovely raspberry-coloured flowers about 15cms high. These are perennials but are not evergreen. Along with miniature geraniums, small saxifrages and pinks. It is the only alpine area I have and it looks colourful most of the year. All these plants need regular dead heading to continue flower production.

I described buying a Hydrangea petiolaris "Silver Lining" a few months ago. It is a climbing hydrangea with a variegated leaf for a north facing wall. Well, this plant had put on no growth. Jeff my gardener had listened to a pod cast from a hydrangea expert who said the best way to plant climbing hydrangeas was to lie the plant horizontal on the soil and cover the stem with soil but leaving the leaves uncovered. Apparently, nothing will happen for 2 years but then the plant will send up shoots that will cover the north facing wall from a wide base, so we have done this. I have to

remember to water the plant regularly as it grows in a rain shadow and I look forward to two years hence when, hopefully, I will see some activity. As I always say, one has to be patient when gardening.

This time of year, it is very busy due to dead heading and cutting plants down to produce a second flush of flowers into the autumn. Weeds are not growing due to the drought and the autumn mulch which suppresses any annual weed. We cover all the beds every year with a 5cms layer of our own compost or compost or soil improver we buy. I have written about this before but I cannot emphasise enough this saves hours of time in the long run as only the perennial weeds need removing and certainly over the last 6yrs they have become less and less. Also, at this time of year the perennial geraniums, catmint and, delphiniums need cutting back to the ground to encourage new growth and another crop of flowers. Likewise, aquilegia although not flowering will re-grow into a tidy mound of neat foliage. Alstroemerias need to have their dead heads removed, please pull the stems to remove them as this stops self-seeding and also reduces the ability of the plant to become too invasive locally. These plants will then continue flowering until November or any early frost. Rather than cutting the whole plant down, salvias benefit from removing any branch on which the flowers are spent down to the next pair of leaves. This encourages another to develop and allows the plant to bulk up and so prolong the flowering period.

As well as the perennial plants in the borders I have several varieties of lilies, some I've had for about 25 years which have naturalised into large clumps that reliably flower and produce wonderful displays each year. At this time, I bought the tall Trumpet Lily Regale which has the most wonderful perfume. The stalks need no staking even though the multiple trumpets are quite heavy, they withstand the wind here. About 4 years ago I bought lily 'Pink Perfection' in the same group but although this has a lovely perfume it has not grown so well needing staking and rather than 10-15 trumpets on each stem only manages about 4-5. These trumpet lilies start to flower about now for about 6 weeks. I bought various shorter varieties of lily, some have thrived but most have gradually disappeared, these flower earlier and are now finished.

During Lockdown in 2020 I watched a virtual Chelsea Flower Show and saw a feature on lilies by Hart's Lilies from Essex. This company always win the gold medal at

Chelsea so "Hart" being my maiden name I decided to buy some lilies from them. I have not been disappointed. I bought 5 varieties of Oriental Lilies, one of which is called Roselily Anouska. These 10 bulbs were planted as 2 groups of 5 in different borders and they have multiplied. This year they are taller, about 1.2m, but have strong stems which do not need staking. The flowers are pale pink with a darker border on each petal and the back of the petal is dark brown/ purple. The foliage is very dark making for a dramatic contrast. This year some bulbs have three flower stems developing, each with up to 10 individual flowering heads, so the display will be even more spectacular. I bought a collection of 3 bulbs of 4 different Oriental lilies last year. I grew these in pots using ericaceous compost as directed. All are perfumed. The varieties were, Extravaganza, Firebolt, Casa Blanca and Companion. They all did well and grew to about 60cms with lovely perfumed flowers. Last Autumn these were dug into the narrow border on the east side of the garden in a relatively sheltered position and have grown well. They are all over 1m tall with multiple flower heads which are about to burst open, I really cannot wait to see the flowers.



Roselily Anouska

Growing lilies is really easy in borders. The soil needs to be slightly acid, mine is PH 6.5 and well drained. They need sun or partial shade and the bulbs need to be planted 10-15 cm deep. These plants will give you years of pleasure. My lilies, especially these Asiatic and Trumpet ones are a highlight of the year to me.

The garden is full of summer perennials most of which are in flower, and the dahlias are all now producing colour. I am still waiting for some including; *Alcalthaea suffrutescens* 'Parkfrieden'. The *Cobaea* has just had its first flower today as well as a *Tigridia*, I took pictures of both and sent them to a few friends as this gave me a lift. I have been struggling with Covid for the last week and have only just managed to get back into the garden. Today is the first day I have managed an almost normal day. There is just so much work to do as this has been neglected for about 10 days due to our North Devon visit and Covid on my homecoming. Hopefully I will get on top of things in the next few days.

Bantham Village Stores & Coffee Terrace



Amazing estuary views, Selection of Coffee & Tea, Covered outdoor seating area, Full Breakfast & Lunch menu, Take away food available, Ice Cream, Newspapers, Everyday Groceries, Beach Goods, Gifts and much more..!

For more information on our products and services please call 01548 560645



DOG & SOAP

**SHOP : GROOM : TREAT
KINGSBRIDGE**

Our fabulous dog friendly store has everything you need for your four-legged friend, from food & treats to coats, collars, beds & so much more!

We have a superb salon for you to DIY wash & groom your own dog.

Or why not book your pooch in for the full works with our in-house professional groomer.

Following us on Facebook or Instagram
@dogandsoap

Tel: 01548 288276
Email: ruth@dogandsoap.com

Unit 3, Old Station Yard TQ7 1ES (Just past
Tally-Ho & Three Sheets)

**KINGSBRIDGE
EYE CARE GROUP**

Clinical Excellence

Full eye health examinations
Contact lens specialists
Retinal photography
Optomap, Ultra-wide digital retinal screening
Glaucoma diagnosis & assessments
OCT Eye scanning examination
Tailor-made lenses and spectacles
Frame and Lens packages
Free hearing assessments

Luxury Designer Brands

Call us to book your appointment today

Kingsbridge Eye Care
01548 856854

Nigel Frost Optometrist
01548 830944

www.kingsbridgeeyecare.co.uk



Based just outside East Allington with plenty of parking or delivered to you.

- Timber – fencing, sleepers and more.
- Compost, seeds and garden essentials.
- Power and hand tools.
- Ironmongery – hangings, latches etc.
- Fixings – screws, nuts and bolts.
- Post fix cement, creosote, hypochlorite.
- Farm, Poultry, Pet and Equine feed.
- Bedding, hay and haylage.
- Electric Fencing.
- Animal health products.
- Oils, Grease, WD-40 etc.
- Waterpipe, fittings and water pumps.
- Wooden and metal gates.
- Engineer on site.

www.haddys.co.uk

Fields & Furrows
Coles Cross
East Allington
TQ9 7RH

01548 521 885
fields.furrows@gmail.com

Rose Paterson Soft Furnishings

Quality Handsewn Curtains
Poles and tracks
Loose Covers
Fabrics

Free Quote
A Complete Service

Tel: 01548 856324
Email: rosepaterson@gmail.com
www.patersoninteriors.com

Thinking of letting your holiday home in Thurlestone?

.....

With over 20 years' experience, our locally-based team are proud to offer an award-winning property management service for holiday homes in and around Thurlestone.

This, combined with our consistent year-round bookings and national marketing reach, makes us the first choice for holiday home owners.

Contact us today to find out about the support we could offer you.



Coast & Country Cottages



01548 802179 | coastandcountry.co.uk

Visit us on Island Street, Salcombe

A LITTLE LIGHT RELIEF

Jane walked past her local pet shop every day on her way to work. And every day a parrot, placed in a cage out front, said to her, "Lady, you're ugly!" Well, Jane let this pass for a while but it began to irritate her, so she spoke to the shop owner. He was extremely embarrassed and apologised to her and reprimanded the parrot promising Jane it would not happen again. However, the very next day once again the parrot said to her, "Lady, you're ugly!" Well, Jane was very upset by this and immediately threatened to sue the pet shop owner if it happened again. Naturally, this was the last thing he needed, so now he wasn't happy either. He took the parrot into the alley at the back of the shop where there's a bin and he said, "Now you listen to me! You tell that lady she's ugly one more time and I will break your neck and throw your body into that bin. Do you hear me?" The parrot nodded. The following day as Jane walked past the front of the store she stared at the parrot and she heard nothing. Jane smiled and walked on, but as she was disappearing into the distance, she heard the parrot behind her say, "Lady, you know what I'm thinking!"

One of my wife's pupils was wearing a Fitbit watch, which prompted my wife to ask, "Are you tracking your steps?" "No," said the little girl. "I wear this for Mummy so she can show Daddy when he gets home."

Last week Ronnie Walsh went to the movies at the Rialto Cinema in Bristol to see "Slumdog Millionaire" but because of two women sitting together in the row in front of him chatting loudly, Ronnie was unable to hear the dialogue clearly. Ronnie leaned forward and said in a stage whisper, "Excuse me ladies but I can't hear."

"I should hope not," stormed the woman, "this is a private conversation."

A police officer found a perfect hiding place to watch for speeding motorists. One day, the officer was amazed when everyone was under the speed limit, so he investigated and found the problem. 10-year-old Dennis was standing on the side of the road with a huge hand painted sign which said 'Radar Trap Ahead.' A little more investigative work led the officer to the boy's accomplice, another boy about 100 yards beyond the radar trap with a sign reading 'Tips' and a bucket at his feet, full of change.

My sister, Paula, and her husband, Chris, had just finished tucking their young ones into bed one evening when they heard crying coming from the children's room. Rushing in, they found Tommy crying hysterically. He had accidentally swallowed a 5p piece and was sure he was going to die. No amount of talking could change his mind. Trying to calm him, Chris palmed a 5p coin that he happened to have in his pocket and pretended to remove it from Tommy's ear. Tommy, naturally, was delighted. In a flash, he snatched it from his father's hand, swallowed it and demanded cheerfully – "Do it again, Dad!"

Village News Round-Up

Jubilee Celebrations

Our thanks and appreciation have to go to everyone who helped to provide 4 days of fun and entertainment for the parish during the Jubilee weekend. Each day provided something different for all ages and was a joy to see. Could this be the start of an annual event for the parish bringing everyone together? All that's required is a venue, music and food and drink, what do you think?

Jubilee Celebration Video

If you would like to rekindle the memories of the great time you had at the various events, then go onto the parish website (www.thurlestoneparish.co.uk), (you will find the link on the front page) and have a look at the excellent footage taken by Julian Ware, you'll probably recognise a few people.

Court Lane/Post Office

The residents of Court Lane (known locally as Post Office Lane) would like to remind everyone that this is a private lane and not a cut through down to the shop/pub/golf club etc. For those people visiting residents of the lane there is a 10mph speed limit as children walk up and down the lane to and from school and it is also a public right of way for walkers. So, if you are going to the shop/pub/golf club etc please go round via Court Park where the visibility on to the main road is actually much clearer.

Kingsbridge Estuary U3A

The Kingsbridge Estuary U3A is holding an Open Meeting in Malborough Village Hall on Friday September 30th at 10am until noon to welcome anyone wishing to learn about the interests and activities on offer. More information can be found on the website: www.u3asites.org.uk/kingsbridgeestuary/welcome

Milk Delivery

If you are missing your milk being delivered to your doorstep, then you are in luck as an organic farm in Ugborough has started delivering to Thurlestone on a Monday and Thursday early in the evening. All packaging(which they will collect from you) is fully compostable. If you would like to join the Honeysuckle delivery round and find out what other products they supply then take a look at their website: www.hownowdairy.co.uk or call them on 01752 466870.

Movies on the Square, Kingsbridge

Once again you can watch family favourite films on a giant outdoor screen, which is free with no booking necessary. Seating is limited so bring your own just in case. No glass is allowed on the square. Films being shown are:

Friday 5th August, 9pm: Grease (PG)

Friday 12th August 8.45pm: Mary Poppins Returns (U)

Vintage Bus Day

This popular event is also making a welcome return on Saturday 17th September, vintage buses from the 1920s & 1930s will be providing free services to and from villages in the area. Further details can be found on: www.tvagwot.org.uk

Simon Hurrell

Peter Hurrell building contractor

In house design
Stone walling
Plastering
Guttering
Fencing
Roofing
Patos

Painting & Decorating
Landscape design
Pressure washing
Extensions
Alterations
Drainage
Decking

All building work undertaken

Call Simon: 07703322519/01548560521

Care visits at home

A local company that cares

For many people the questions about care don't arise until suddenly, there is a need.

Home care with Bluebird Care can be anything from a 30 minute care visit to 24 hours live in care, supporting you to remain as independent as possible, living the lifestyle you choose.



Call and talk to one of our friendly team today:



01548 800097
bluebirdcare.co.uk/plymouth-south-hams
kingsbridge@bluebirdcare.co.uk

We are independently regulated

Churchstow Garage Ltd

Rob Franklin

Over 40 years in the motor trade and offering a friendly, honest and reliable service

- MOT/Repairs
- Services
- Brakes
- Clutches
- Tyres
- Air Con

Unit 4D, South Hams Business Park
Churchstow, Kingsbridge TQ7 3QH



Tel: 01548 464001



Lauren's Mobile Hairdressing



Covering all aspects of hairdressing

21 years in-salon experience

Appointments Mon - Sat, 9am - 5pm

All colouring services require a
patch test with consultation

Mob: 07791 650595

Feet First

Professional Foot Care

Phone Samantha for details

07761 930917

**Providing foot care in the
comfort of your own home**

**Wearing PPE and providing individually
sterilised instruments**

Cutting Toe Nails
Treatment of Hard Skin, Corns and Callus
Ingrowing Toe Nails
Fungal nail and skin conditions
Verrucae

Email: feet.first3@outlook.com

Looking to let your property?

We are an award-winning agency specialising in coastal, waterside and rural holiday cottages throughout the South West.

As the leading agent in Thurlestone we have thousands of guests looking to holiday in this specific area each year.

For more information and a copy of our owner pack call or find us online.

Toad Hall®

COTTAGES



BEST UK SELF CATERING
HOLIDAY BOOKING COMPANY
★ MEDIUM ★

01548 202020
toadhallcottages.co.uk

Parish Hall News

by Alison Daily

What a fabulous weekend of Jubilee celebrations, starting with the lighting of the beacon and finishing with dancing in the street. The hall was proud to play a part in the festivities by providing the 2 events sandwiched between those mentioned, kicking off with:



Family Fun on Friday 3rd June

The weather was dry and fine (which is always a bonus) for a very lively and busy evening with all generations coming along to enjoy the games provided, some they may have played before but others encountered for the first time, such as kurling and archery. Thank you to all the lovely people who helped steward the games and those who turned up to make this a fun filled evening for everyone, hopefully you all enjoyed yourselves as much as we did, although I think the Human Fruit Machine may have traumatised some! We've already had a debrief and are thinking of how it can be made even better next time.



The following day, on **Saturday 4th June**, we returned to the hall to prepare the tables for the **evening concert**. What a difference a few hours make, the heavens had opened and we were greeted with heavy rain and a group of Duke of Edinburgh Award participants who were sheltering under what cover there was whilst waiting for their coach before they went off for hiking and camping out overnight. The hall looked magnificent as can be seen in the photograph, with its bunting and tables decorated in red, white and blue along with

flowers and flags. All enjoyed the atmosphere and the chance to join together with friends and family, while watching the concert and singing along and waving flags. That was day three over with. (By the way the DofE students all arrived back safely the following morning after a successful expedition.)

I would like to thank all the committee, new and old, for their hard work in bringing these two events together, especially as it's been a while since we've staged anything like this. It was a true baptism of fire for the newbies who were really thrown in the deep end with back-to-back events, but everyone worked well together as a team. Well done one and all.

We had a couple of weeks off before the hall played host to **Open Gardens on Sunday 26th June** - you will find a report elsewhere in the magazine.

Congratulations to Sue Dwyer for organising it and thank you to the owner of the gardens without which there would have been no open day and all the helpers and bakers of cakes who played their part in making it such a successful occasion.

There will be a summer break before classes resume again in September, and work begins on organising the next event we hope to bring you which is an **Autumn Fair on 1st October**. The format will be a change from previous ones as we would like to make it more craft and produce orientated. There are so many talented artisans in the local area and it will be our pleasure to invite them to come along to showcase their wares.. Refreshments will also be provided, so please come along and see what is on offer. The poster elsewhere in the magazine gives more details and also keep an eye on the Thurlestone Parish Hall Facebook page for further updates.



KATS presents Calendar Girls by Tim Firth



KATS' September play is Calendar Girls by Tim Firth.

Set in Yorkshire, Calendar Girls charts the friendship of Annie and Chris, members of the local Women's Institute. Following the death of Annie's husband from Leukaemia, Chris persuades fellow WI members to raise money in his honour with their yearly calendar. This calendar usually features "spectacular views" of local landscapes, but Chris and Annie propose a different type of spectacular view: They'll pose nude for photographs. Overcoming their initial reserve, the ladies drop their dressing gowns, modesty spared only by artfully placed cakes, knitting and flower arrangements much to the chagrin of their WI Chairman, Marie. The calendar sparks a global phenomenon. But as media interest snowballs, the Calendar Girls find themselves exposed in ways they'd never expected, revealing more about themselves than they'd ever planned.

Adapted from the film of the same name, Calendar Girls is based on the inspiring true story of eleven WI members who, to date, have raised over £5million for blood cancer research since their calendar was conceived in 1999.

Telling the story of a community coming together to make something positive out of a tragedy, Calendar Girls is quirky, poignant, and hilarious – guaranteed to make you laugh, cry, and maybe even leave the theatre humming Jerusalem!

Calendar Girls will be staged at Malborough Village Hall from

21st – 24th September 2022 at 7.30pm. Tickets £12 available from 1st August.

Visit kats-kingsbridge.co.uk or call 07584 905810.

POSTBAG

THANK YOU!

A huge thank you and congratulations must be made to Jack Rhymes and team, plus many others for all their hard work, long hours and thoughts which they put into the Platinum Jubilee weekend.

What a success the combined celebrations between Bantham, Buckland and Thurstlestone have been as the street picnic and party showed. Happy, relaxed and enjoyed by all ages with both 2 legs and 4!

WELL DONE EVERYONE and THANK YOU!

Juliette Atkin

Dear Editor



I would like to publicly thank all those involved in making the Parish Platinum Jubilee celebrations such a success, especially Jack Rhymes, and also the generous sponsors who contributed to the events.

The bonfire got the celebrations off to a great start and the all-day event on Sunday was a very special day, which, I am sure, will be remembered by those who attended for many years to come.

Yours sincerely
Anna Martin



Curtis Whiteford Crocker have built a reputation for being a leading practice with a friendly face. Keeping our clients informed and in control.

STRONGER TOGETHER

We have specialists in all fields of both private and commercial law, our experienced team serve Plymouth and surrounding areas; they will help you to understand any legal process that arises. Working with a friendly, approachable and experienced attitude. We are able to build a relationship with you and understand exactly the outcome you expect and require.

Kingsbridge | 01548 800704 | southhams@cwcsolicitors.co.uk

CWCSOLICITORS.CO.UK | @CWCSOLICITORS



PRIVATE CLIENTS

CONVEYANCING

WILLS & PROBATE

LASTING POWERS OF ATTORNEY

LANDLORD & TENANT

LITIGATION & PROFESSIONAL NEGLIGENCE

MATRIMONIAL & FAMILY MATTERS

RESIDENTIAL PROPERTY SALES, PURCHASES & REMORTGAGES

BANKRUPTCY & DEBT RECOVERY

DEVELOPMENT / PLANNING SERVICES

COMMERCIAL CLIENTS

AGRICULTURAL MATTERS

BUSINESS ACQUISITIONS, MERGERS & COMPANY LAW

COMMERCIAL LANDLORD & TENANT

COMMERCIAL LITIGATION & PROFESSIONAL NEGLIGENCE

COMMERCIAL PROPERTY

CONSTRUCTION & DISPUTE RESOLUTION

CORPORATE OFFENSES

DEBT RECOVERY

EMPLOYMENT MATTERS

INSOLVENCY & LIQUIDATION



Creative Event Catering

Claire J Wallace

Private and Corporate Outside Caterer

The Cordon Bleu Diploma
Business Management Level 4

Mobile: 07811 422612

Tel: Kingsbridge (01548) 560 191

E Mail: info@claires-kitchen.co.uk

Web: www.claires-kitchen.co.uk

Facebook : ClairesKit

Google : Claires kitchen devon

DEVONSHIRE FINE ART

Picture Framing
&
Restoration

Family business established 1988

We frame everything.
Friendly, helpful advice.

9 Church Street · Modbury · PL21 0QW

Call Karen on 01548 830872

devonframing.co.uk

healthhub

**It Is NOT Normal To Leak
When You Cough, Sneeze,
Run or Jump, At Any Age!**

Incontinence is a common problem we deal with
in the clinic..... but it's not normal!

No matter how long you've suffered
there is STILL something that can be done. We
are here to help.

Find out how we can help you with our **FREE**
TASTER SESSION.

or **FREE** PHONE CALL WITH A PHYSIO
Call us and quote "Thurlestone Summer 2022" to
book.

www.healthhub-kingsbridge.co.uk 01548852355

Physio Massage Pilates Wellbeing Fitness

Thurlestone Garden Services

All year round garden
maintenance

- Hedges
- Lawn Care
- Scarification
- Pruning
- Weeding
- Power Washing



Free consultation, no obligation

For more information

CALL DAVE

07542556649

THE GRATE REVIVAL LTD



Stoves Lighting Fireplaces Fireside Accessories Logs

www.thegraterevival.com

info@thegraterevival.com

01548 853918



All Saints' Diary

CHURCHWARDENS: Liz Webb 560090 & Mike Hodges (561124)

Everyone is welcome at all services.

Church Services at Thurlestone Church,
unless indicated otherwise

Sundays

2ND & 4TH SUNDAYS

AUG. 7TH, 21ST, SEPT. 4TH, 18TH

AUG. 14TH & 28TH, SEPT. 25TH

SEPTEMBER 11TH

OCTOBER 2ND

8.00am Holy Communion (BCP: 2nd; CW: 4th)

11.10am Parish Eucharist (CW)

11.10am Morning Worship

11.00am Benefice Sea Sunday Service at Bantham

11.10am Harvest Thanksgiving + Harvest Lunch (?)

Weekdays

THURS SEPT. 8TH (No service in August) **10.00am** Holy Communion (BCP) at White Horses, Bantham

EVERY WEDNESDAY **10.00am** Holy Communion (BCP) (said)

BCP = Book of Common Prayer (Traditional language) CW = Common Worship (modern language)

*Variations and more information is on Church Notice Boards, The Rock and
www.thurlestoneparish.co.uk/welcome-to-all-saints-church*



YouTube

Sunday Services led by the Revd. Daniel Hartley

www.thurlestoneparish.co.uk/recorded-services.html

You would be welcome to join us for **Activities in the Church Meeting Room**



Coffee-Time

WEDNESDAYS 10.30 - 11.30 a.m.

Donations in aid of Charity/Church Funds



Aune Valley Toddlers

for children under 4 years with parents or carers
A chance for parents/carers to chat, while the children socialise

THURSDAYS (from Mid-September)

9.30 - 11.00 a.m.

More information from Siân Hodges (561124/07784893405/sian2.hodges@btinternet.com)

Disabled access - Wheelchair available

More information on <https://www.thurlestoneparish.co.uk/church-events-diary.html>



Thank you to everyone who contributed during this year's

Christian Aid Week, whether by envelope or online.

The total donated was **£1755**, of which 57% was Gift Aided, adding a
further **£261.25** and giving the truly magnificent

GRAND TOTAL OF £2016.25. THANK YOU.

Please use **CHURCH CAR PARK** when attending Church or Meeting Room



RECTOR: Revd. Daniel Hartley
01548 562727
danielhartley.aunevalley@gmail.com

READER: Peter Gornall

BECOMING (Part One)



As human beings we are always in the process of becoming. We grow, we develop, we learn. Through these developments and experiences we become more than we were. What is true for us individually is also true for us collectively. We grow as communities, societies and nations. We grow also as a species, as the collective experience of being human.

It would be wonderful if this growth were linear. If we could chart our improvements and achievements over years, decades and centuries. Of course there is much that has been achieved as humans have grown and developed, but alongside these achievements there has also been failure, death, destruction, oppression, greed and misery. In our world today we witness the terrible atrocities in Ukraine. For every media-covered Ukraine there are other examples of non-media covered atrocities. The Ethiopian army has been blockading and shelling Tigray for over a year with an estimated 50,000–100,000 deaths from direct killings, plus 150,000–200,000 more from starvation. (*New Left Review* 133/134, p. 5).

In the UK, whilst we are thankfully spared the violence and destruction of a Ukraine or a Tigray, we face a cost of living crisis that is requiring many of the poorest in our society to choose between food and utilities. This is not a result of some natural disaster, but the result of structural inequalities in our economic system that are, in turn, the result of human choices and decisions.

Due to the experiences of our world, it is tempting to conclude that we are not, after all, becoming. It is tempting to conclude that the process of becoming is eternally deferred by our actions and choices, individually and collectively. We can look at our broken world and say "it was ever thus". Our deep rooted failure to realise our becoming is because the malpractice of human existence leaves the world with an immovable inertia.

So is there a hope? Could things be different? In answer to this I would suggest that we might look for a hope rooted in an unexpected place. A hope rooted in the Christian Faith. Perhaps Christianity has something to say to our unrepairable brokenness and to our desire to restore the process of becoming.

At the heart of the Christian way of life is the practice of repentance. Repentance does not simply mean "saying sorry". It means a "turning around", a reorientation, a structural transformation. It means the achievement of something, in response to divine offer, that we could not achieve according to the received (and broken) practice of human living.

So what is this and how does it affect our way of life, our understanding of becoming and the progression of the human condition? Well, in this issue of the *Village Voice*, I've run out of room. But take a look at the next issue and you'll find the conclusion to this article.

David Hartley

2023 Local Calendar

featuring the winning photographs of the Thurlestone, Buckland and Bantham Area in the recent competition

£8 *in aid of Church Funds*

available from

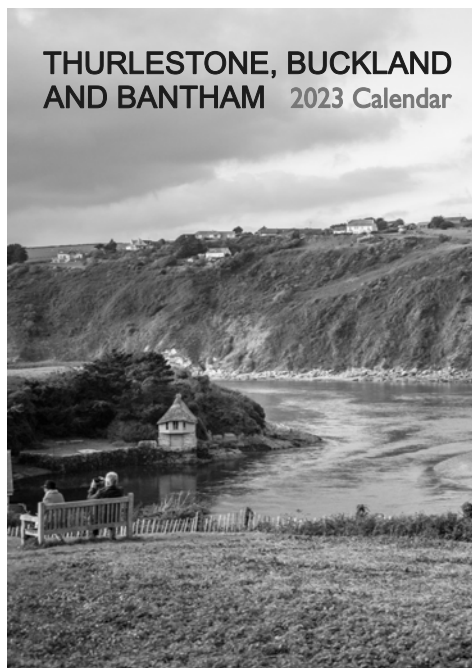
**Thurlestone & Bantham Shops,
Church & Meeting Room
or Liz Webb (560090)**

**Postal Order Form from
thurlallsaints@btinternet.com
or 01548 560090**

Winning photos on
www.thurlestoneparish.co.uk/2023-calendar.html

**Why not enter a photo next year?
Entry forms from sale points or**
www.thurlestoneparish.co.uk/photo-comp-form

THURLESTONE, BUCKLAND
AND BANTHAM 2023 Calendar



Everyone is Welcome to
Cream Teas

3.00 - 5.00 P.M.

EVERY THURSDAY

UNTIL SEPTEMBER 1ST

in or outside the

CHURCH MEETING ROOM

ONLY £5

in aid of church funds

Parking in Church Car Park (GF available)



Memories of Yesteryear A Devonshire Fishing Village

This piece was brought to our attention by Tink Donald who came across it in an old issue of the magazine from 1983 and we thought it worth reproducing for you now.

Can you remember the "Daily Graphic"? Around the turn of the century one of the correspondents wrote the following:

"Our undiscovered country is in South Devon. It is reached by the Great Western Railway: but we are not by any means there when we have finished the train journey, for Bantham is our destination, and Bantham is five miles beyond Kingsbridge, at which sleepy little town the train stops.

The road to the fishing village is one to make the flesh of a nervous Londoner creep: it is all up and down hills like the side of a house, and we go ahead at a brisk trot, the South Devon horses seem to grow claws like cats and think nothing of climbing precipices. In due time we arrive, safe and sound, at Avon-Town-on-the-Ham, corrupted in the lapse of the centuries to Bantham.

The Village consists of one short row of thatched white-washed cottages, dominated by the Coastguard Station, a picturesque group of low buildings clustering round 'th big 'ous', which is a pretty weather-board erection belonging to a London barrister. Some eight feet below the River Avon flows placidly, to and from the sea as the changing tide dictates. It is a salmon river, and one of our favourite amusements is to watch the drawing of the pools.

The seine is thrown twice daily, and great is our excitement when the net comes in, and we count from six to twenty of the shining beauties struggling in its toils. Sometimes a big bass or two come in with the salmon, and then the competition among the thrifty housewives waxes keen, for that succulent fish is sold here at two-pence the pound, so that sixpence will buy dinner enough for three people. We can always buy salmon when caught, the demand for it being limited though the price ranges as low as tenpence to a shilling the pound; but comparatively few bass are taken in the pool, and they are sold in strict order of application.

Every morning, somewhere in the small hours, the salmon are taken up river to Aveton Gifford, thence to be conveyed to Plymouth Market.

They are a frugal lot at Bantham and live cheaply. The farthing dough cake is as large as a London penny roll, home cured bacon is sixpence a pound, and apples are to be had at ten a penny. Rents are proportionately low, the only drawback that lodgers are almost non-existent. Half a dozen visitors may find accommodation by engaging theirs rooms from year to year in advance; but if a stranger came unexpectedly he would have to sleep on Bantham Ham unless a kindly hearted villager let him make a bed on the kitchen settle, high backed and wide seated, drawn up to the hearthstone, beneath which stone the most delicious bread is baked, after a fashion long gone out of use everywhere but in Bantham.

Down below the salmon pool the river takes a bend on its way into the Atlantic, and here stream and sea between them have constructed what local yachtsmen call "the most dangerous place in the world" that is to say, a treacherous bar of shifting sand where breakers rise up suddenly, even in calm weather, for the destruction of the unwary.

The sun is setting over the sea and by that setting sun we know that it is time to lay down the pen and join our friends on the wall. The wall is the 'esplanade' of Bantham. There are rendezvous morning noon and night; there the fisherman resort to debate whether the bar is safe for going out; there the coastguard stands to sweep the horizon with his spyglass; and there, yes there, we dry our bathing gowns and towels!"



THURLESTONE HOTEL

SUNDAY LUNCH 28TH AUGUST

Come and indulge in a delicious three course Sunday lunch in our award winning restaurant and enjoy stunning views of Thurlestone Bay.

£30 per person

Advance booking is essential please call 01548 560382



The Voyage Spa open for beauty treatments everyday

Opening hours

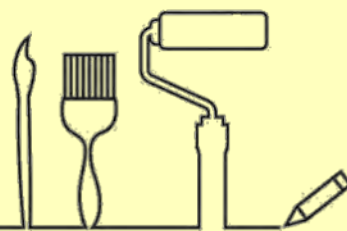
10.00am—7.00pm

To view our full list of treatments please visit
www.thurlestone.co.uk

WWW.THURLESTONE.CO.UK 01548 560382

Decor

by Annie



- Painting & Decorating
- Qualified Designer
- High Specification
- Furniture Re-Styling
- Soft Furnishings

Annie Quinton

07952 772155

info@decorbyannie.co.uk

www.decorbyannie.co.uk



07827816203

15 FORE STREET, YEALMPTON

.....

- ROUTINE FOOT CARE
- DIABETIC FOOT CARE
- CORNS & CALLUS
- VERRUCA
- INGROWING TOE NAILS
- NAIL SURGERY

www.southdevonfootclinic.co.uk

.....

PODIATRY / CHIROPODY SERVICES FOR
ALL THE FAMILY



THURLESTONE PO & STORES

Your LOCAL Store

- ❖ Fresh Bread & Cakes
- ❖ Fresh Fruit & Vegetables
- ❖ Milk & Dairy, Cold Meats & Cheese
- ❖ Pasties, Pies, Sandwiches & Snacks
- ❖ Hot Drinks & Off Licence
- ❖ Newspapers & Magazines
- ❖ Stationery & Greeting Cards
- ❖ Gifts & Beach Goods

Plus other General Groceries and Provisions

Special Services include

- ❖ Photocopier

Also available at your Local Post Office

- ❖ Foreign Currency (24hrs notice required)
- ❖ Car Tax & Bill Payments*
- ❖ Banking#, Savings & Investments
- ❖ Gift Cards
- ❖ E Top Up

#restricted to certain banks

*fees may apply

Grocery Delivery within the Village ~ £2 fee

Amex, Credit and Debit Cards accepted (min spend £1)

Opening times in back of Village Voice

Call in and browse, you'll be pleasantly surprised

PHONE 01548 561917





TENNIS AT THURLESTONE GOLF CLUB



IN THE BEGINNING

Right from the start *tennis courts* were included within the 50 acres of land known as The Warren. The first court was laid in 1900 and 4 more courts soon followed. This included a court in front of the small club house alongside the road as a 1905 picture clearly shows. In those days the *tennis courts* were hand weeded and workers were paid a penny a square yard for their labours!

WARTIME

During the First World War *tennis* continued to be played by a few members but in most respects the club was inactive; those members who did play *tennis* (and croquet) paid a subscription of £1.10.00 per annum!

THE GOLDEN YEARS

The *tennis courts* were an integral part of the Thurlestone scene. Without them many families would have spent their holidays elsewhere at a loss of much income to the Club and village. There were at least 10 *tennis courts* in 1920 and they were very congested at the height of the season, so more courts were added bringing the total to 16 in 1930. By then several players of WIMBLEDON standard came down on holiday, considerably enhancing the quality of the regular tournaments!

The successful combination of the beach, golf and *tennis*, coupled with somewhere to stay attracted many visitors, particularly families who returned year after year (and still do) and usually stayed for a month.

POST WAR YEARS

After the Second World War it was noted by the secretary that THURLESTONE had survived the war years in reasonable condition but would wait for the return of the Hotel visitors before recovering fully. In 1945 membership of the club stood at 120. By 1950 it had doubled, by the end of the sixties the number had increased to 1,000 including golf, *tennis*, social and junior. THURLESTONE had been a favourite for family *tennis* and golf holidays for over 60 years!

Tennis continued to flourish at the Club mainly in July and August when holiday visitors would organise their very successful junior and adult tournaments with Saturday afternoon mixed doubles being one of the most popular. During this time one hard court was lost to make way for the enlarged green keepers' sheds and the grass court known as WEMBLEY gave way to the golf practice ground so retaining 2 hard and 10 grass courts. The new *tennis* pavilion and changing rooms were built in 1967

MILLENNIUM ONWARDS

Several prominent members had given cups so that the holiday tournaments would continue and now many more have been added which has enhanced the summer holiday events and activities. A year round coaching and tournament programme was introduced which encouraged more local people to join, it was then possible to arrange year round fun tournaments, club championships and even some excellent charity



events! With its own refurbished facilities the *tennis section* was able to provide a small kitchen, table tennis and a pool table.

PRESENT DAY

Thurlestone tennis is now booming with local membership increased by 20% this year. There is now established a full coaching programme which caters for the primary school children both during term time and the holidays as well as adult classes several times a week. Local themed tournaments continue throughout the year and the summer holiday programme is extremely busy and popular.

TO THE FUTURE : The aim is always to encourage more participation and to provide a good social and welcoming atmosphere for all *tennis players*. New court surfaces will come in the future so that we can provide more variety for play throughout the year.

The future looks bright for **TENNIS AT THURLESTONE!**

School Report

Sweltering End To The Summer Term!

With all the gorgeous July weather, All Saints' Thurlestone was a hive of activity throughout the summer term. Everyone did their best to keep cool, but it didn't put a dampener on all of the goings-on around school.



Miss Cose's budding photographers put on a fantastic exhibition and invited parents to view their amazing work, whilst the Usborne sponsored readers raised enough to buy £600 worth of brand-new books for the library! Great job! The books have already arrived and the children have had a wonderful time exploring the shelves and choosing new reads.

But it's been outdoors that the real activity has been happening. While the younger children really boosted their Science learning by discovering underwater habitats at the National Marine Aquarium in Plymouth, the older ones have been taking weekly swimming lessons and enjoying a Year 4 residential which included a night time bat walk!

Some of the classes opted to spend their hard-earned cake-sale money on the exhilarating experiences of Adrenalin Quarry and paddleboarding in Kingsbridge estuary.

The school also funded a golf session for every child from Year 1 to Year 6. A big thank you to Steve White and his team for running these sessions at Thurlestone Golf Club – the children had a great time and there was even a hole in one!!

It was amazing to welcome all our families back to share in the enjoyment of Sports Day with a sports filled morning, followed by a family picnic lunch.

Finally, the Summer Fair, organised by our wonderful parents association, at last made a reappearance, much to the delight of all! As well as bouncy castles, tombolas, icecream, food and drink and much more, there was also a recycle/reuse theme with a preloved uniform and book stall. Luckily the water slip'n'slide was perfect for the children to cool off on one of the hottest afternoons of the summer!

Phew! We've all earned a good long rest through the summer holidays, getting ready for learning to begin again in the Autumn term.

Emma Richards



Tel: 01548 852243
Mob: 07971 027058

Hair Design

Manicure &

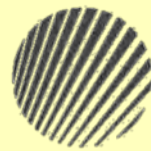
Pedicure

Judith Bentley
HAIR DESIGN

****Personal Mobile Hair Stylist****

****Experienced in all types
of Hairdressing****

Available most days & evenings
IN YOUR OWN HOME



EMMA MOGRIDGE

jewellery designer-maker

Beautiful jewellery for special occasions

Handmade in the South Hams



Commissions - Re-modelling - Repairs

Contact me for a free estimate

emma@emmamogridge.com

www.emmamogridge.com 07854 383 406

Your Local Funeral Professionals

DEVON

JOHN D ANDREWS AND SAVILL

119 Fore Street, Kingsbridge, Devon TQ7 1AL

Tel: 01548 852997 or 01548 857701

www.dignityfunerals.co.uk/local



Part of Dignity plc. A British company


Dignity
WITH DISTINCTION

RGC mobility

KITCHENS & BATHROOMS FOR INDEPENDENT LIVING

- Wet Rooms • Walk-in Baths • Wash & Dry Toilets**
- Seated Showering • Level Access • Grab Rails**
- Raised Toilets • Adapted Taps • Accessible Ovens**
- Rise & Fall Hobs Worktops & Cupboards**

**Clever Kitchen and Bathroom Solutions for when you need
a little help with mobility at home**

Collingwood Road Dartmouth TQ6 9JY 01803 834622 inspirationsatrgc.co.uk/mobility

✿ ✿ ✿ ✿  ✿ ✿ ✿ ✿

✿ **SCRUFFY PUPS DOG GROOMING** ✿

✿ Pittaford Farm, near Slapton TQ7 2QG ✿

✿ Clipping ✿ Handstripping ✿ Scissoring ✿

✿ Bath ✿ Blow-dry ✿ Tidy up ✿

✿ Nail care ✿ Ear care ✿

✿ Prices from £20 ✿

✿ Any breed and any ✿

✿ temperament undertaken ✿

✿ Contact Justine ✿

✿ 07967 965073 / 01548 581789 ✿

✿ scruffy.pupsdg@gmail.com ✿

✿ www.scruffypups.net ✿

✿ ✿ ✿ ✿ ✿ ✿ ✿ ✿ ✿ ✿ ✿ ✿ ✿ ✿

Theresa M. Gaunt
M.C.S.P.

Physiotherapist

**Chartered and
State Registered**

Bowen Technique Specialist

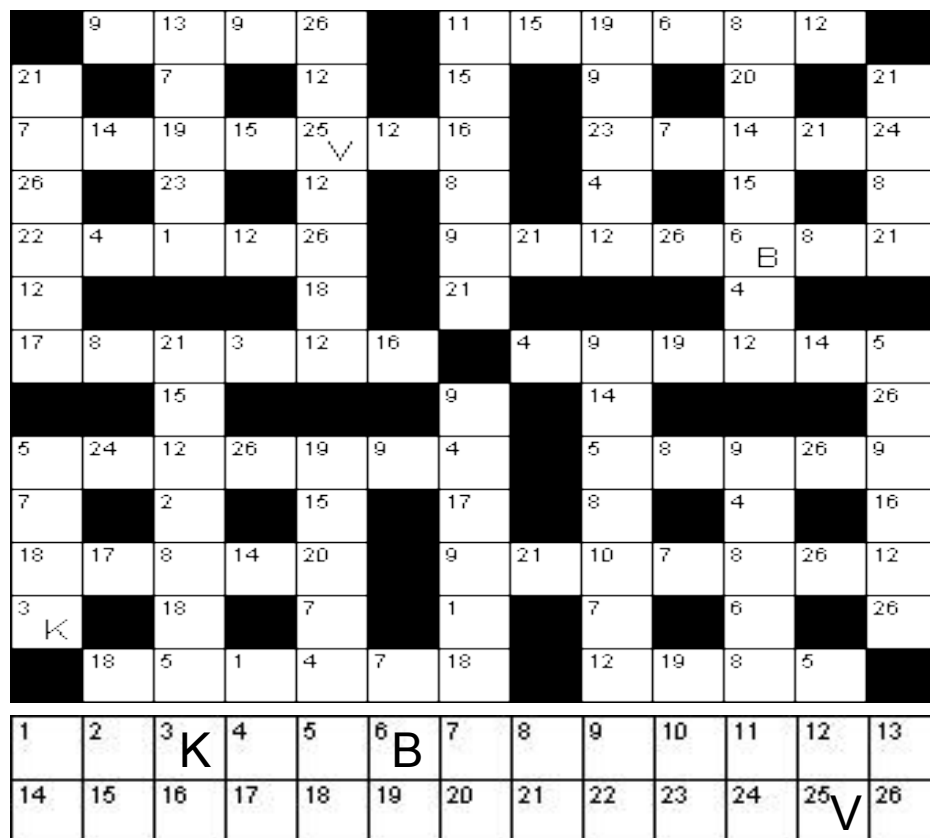
Home visits upon request

Spring Dale,
South Milton,
Kingsbridge TQ7 3JQ

Tel: 01548 560603
Mobile: 07548 213633
Email: theresa.gaunt@sky.com

Puzzle Page

A BOTTLE OF WINE to the first all correct entry drawn on 1st September 2022. Please submit entries to: 5 Mead Lane, Thurlestone, TQ7 3PB or email: cgwonthenet@thamead.co.uk



CODEWORD

Each letter in this puzzle is represented by a number 1-26.

Can you crack the code and solve the crossword?

Every letter of the alphabet is used at least once. Three letters are already in place to get you started.

Sudoku - medium

3	4			6		2		9
2		8	4	9				6
	2		3	1				
		4				1		
				2	5		4	
9				5	1	4		3
4		3		7			6	8

Sudoku - hard

		1	3		2			
		3			7		4	5
		7						9
		6	5				7	
2								1
	9				1	4		
5						9		
6	1		2			8		
			9		8	5		

There were 7 correct entries last month. First out of the hat to win the coveted bottle of wine was Dave Hayward. Commiserations to Dave Gibby, David & Mary Horne, Neill Irwin, Pauline Lonsdale, Susan Penwell, and Lindy Price.



Thurlestone Parish Hall Autumn Fair Saturday 1st October

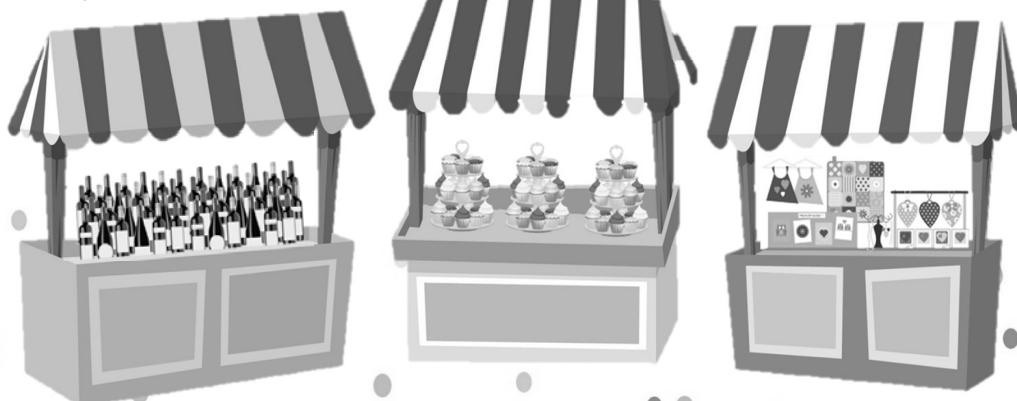
10am – 4pm

Join us as we celebrate our 17th year

Come along to meet and support local artisans
showcasing their Arts, Crafts and produce

Refreshments available all day

Free entry



**SOUTH WEST
UPHOLSTERY SERVICES**

Paul & Debbie Tucker

**RE-UPHOLSTERY
SPECIALISTS**

Domestic furniture
Antique & Modern
Marine upholstery

Unit 4
Torr Quarry Ind Estate
East Allington
Nr. Totnes TQ9 7QQ

email: debbie@swus.co.uk

Tel: 01548 521866



Island Street Salcombe

www.gallery5salcombe.co.uk

01548 288162

Gallery

original paintings, driftwood art,
trompe l'oeil, murals, cards,
prints, hand painted furniture,
beautiful & unusual giftware

Open every day



THE VILLAGE INN
NOW OPEN ALL DAY FOR DRINKS

12pm—11pm

Food Served Daily: Lunch 12.00pm – 2.00pm Dinner 6.00pm – 9.00pm

01548 563525 THEVILLAGEINN@THURLESTONE.CO.UK
WWW.THURLESTONE.CO.UK

holidaysplease



Anywhere YOU want to go

*Hawaii ~ Borneo ~ Mauritius
Thailand ~ South Africa
Peru ~ India ~ New Zealand
New York ~ Barbados*

to name a few!



I can help with short breaks, long haul luxury holidays, honeymoons, tailor-made multi-stop itineraries, cruises, city breaks, ski holidays, and even weddings abroad!

Give me a call to see how!

Gretchen Kibbler

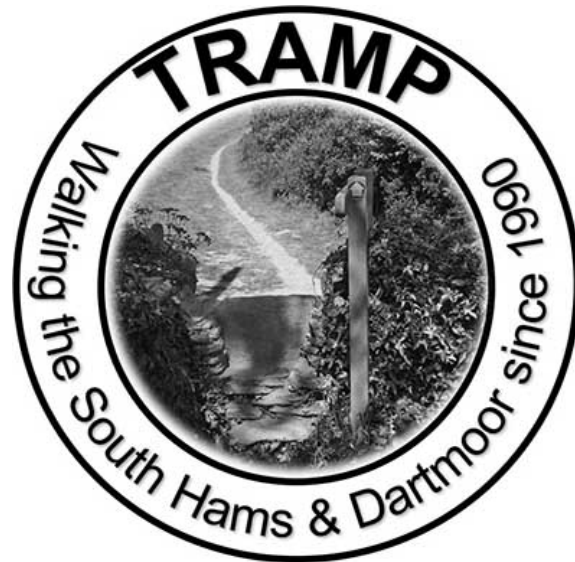
gretchen@holidaysplease.com

01548 562 045

<https://www.facebook.com/GretchenHolidaysplease/>

With over 15 years of experience I would love to help put together your perfect holiday!

Reports for walks during May, June and July



MAY 16th. A Tramp May Special – Avon Estuary Paddle & Trail Walk. Mike Hodges.

I last walked the Avon Estuary at low tide when our children were young in the 1990s. At that time a Hope Cove walking group regularly walked the Avon Estuary on a very low tide each summer.

Despite a rather overcast and windy start seven Tramp walkers set out from Aveton Gifford car park 1 hour before low tide on 16th May in shorts and foot wear suitable for paddling. After a dry walk down the tidal road we headed out across the mud to paddle across the channel to the mid sand bank. We were to cross the channel a total of seven times between the various sand banks before reaching the quay at Bantham. Although crossing points had been carefully researched on a low tide a month earlier, sand banks move around, so much fun and competition was had in optimizing ones crossing to minimize how far up the water came! Walking poles proved a great accessory as depth gauges in addition to their normal support role. It's a beautiful estuary and walking the estuary bed gave great views of the many water birds.

By the time we reached Bantham the sun was breaking through the clouds and we had an enjoyable lunch break at the village stores café, looking back over the route we had just walked.

Refreshed, dried off, and changed into walking boots we headed off out of the

café and onto the eastern portion of the way marked Avon Estuary Walk. The walk which passes through open fields, Stiddicombe Wood, across the top of Stiddicombe creek, past Stadbury Farm, and down the old green road to South Efford Marsh Nature reserve, gave many varied views of the estuary bed we had walked earlier. As we reached the car park at Aveton Gifford the tide was flowing back in quickly, to cover the sand banks we had walked earlier.

Safety Note: This walk should only be attempted on low spring tides (<0.8metre). Once the tide starts to come in the Estuary fills fast so it is important to complete any walk down or up the Estuary bed before the tide starts flowing up the Estuary.

May 31st. From South Pool. Claudette Uff.

The Magnificent Seven & two dogs. Taking the high road out off South Pool the intrepid seven ascended the parapet, looking at spectacular views along the way.

Eventually getting to the torrential riverbed, negotiating the stepping stones, all made it, with two muddy dogs. We carried along the Collapit Creek, taking care of the threatening clouds,

managing to have our tucker in a sheltered area.

Travelling along a natural valley we arrived at bluebell woods; unfortunately they had been and gone.

We took the old quarry lanes back into South Pool, to enjoy our cowhide and whisky lunch, beside the pleasant estuary. We had a great time.



June 6th.
Norsworthy Bridge
to Down Tor.
Alasdair & Gill
Durden

The day after the weekend of celebrations for Her Majesty's Platinum Jubilee, a small group of us set off to Dartmoor for a new walk. This walk of 4 and a bit miles offered breath-taking views and plenty of historical features on the way. We drove to Burrator Reservoir and parked up by Norsworthy Bridge, from where we followed a track which took us past three abandoned farms. These farms - Middleworth Farm, Deancombe Farm, and Combeshead Farm - all originate from the early 1300s, but were rebuilt in the late 19th century. They were abandoned around 1920 when moorland farming became less economic and finally when the water in Burrator Reservoir was raised. As we followed the track, we passed a barn belonging to Middleworth Farm which had been rebuilt in 1885, with its walls still intact today. Further along we saw evidence of more farm buildings, but in a ruinous state.

At this point, we made a diversion to cross the Narrator Brook, which flows along the Deancombe Valley, to search for the remains of a medieval blowing house. We eventually discovered it and were intrigued to learn that the remains of over 40 blowing houses on Dartmoor have been identified, all associated with

the extensive tin mining which took place. A blowing house was a building used for smelting tin, and contained a furnace and a pair of bellows that were powered by an adjacent water wheel. They were in use from the early 14th century until they were gradually replaced in the 18th century by 'reverberatory' furnaces, which did not need the forced draught of air which bellows provided, and therefore the water wheel. Incidentally, by the Narrator Brook, we came across a group of five girls who were all filtering water from the brook and filling their water bottles for drinking. We never found out how far they were travelling!

Further along the track, at Combeshead Farm we came across a potato cave, which is quite roomy inside (!) and which was presumably used by the farmer to keep his crop of potatoes dry and at an even temperature. From here, we skirted Combeshead Tor, crossing the open moor to arrive at the Down Tor stone row, which is one of Dartmoor's finest stone rows, with a stone circle at its west end. These stone rows date from the Bronze Age and were built for religious or ceremonial purposes - the stone circle possibly being a burial site. From here, we made our way downhill through ancient enclosures, with fine views down to Burrator Reservoir and up to Sheeps Tor, arriving back at Deancombe Lane, whence we retraced our steps to the car park.

14th June. ASPRINGTON to TOTNES
and back. Linda Chilcott. 5.4 miles. 3
hours.

It was a cracking morning with wall-to-wall sunshine and a light breeze.

Some of us met at Court Park as usual, to car share before setting off to park near St. David's church at Asprington.

There were 9 of us altogether plus 3 well behaved Labradors.

Our walk started on a narrow path through allotments full of veg and flowers, then on to the well-kept recreational ground. At the exit there is a large area for the locals to take their garden waste, which I thought was a great idea.

We headed down toward the estuary, entering Sharpham ground, over the first of several stiles, where, we were hit with stunning views, a cloudless sky, the river Dart at low tide showing off her mud flats, the tall marsh grasses swaying in the breeze, meadow grasses yet to be mowed and an array of beautiful trees with their various shades of green. Everything looked so lush that we stopped to take photos.

Over another stile on to a lane. Right for Sharpham House, and left for us. On through meadows and shaded woodland then on to the boat yards at Totnes.

Much of it is turned into housing, with their roof top gardens and tiny garages, but there was a time when this place was alive with visitors. Over 1 million people came to see the development of the largest carbon fibre catamaran, when finished she was the size of Wimbledon centre court, a dream of one sailor Pete Goss. Local support, as well as the rest of the country was so enthusiastic, donating almost 4 million pounds.

The cat was called the Ocean Spirit and I remember her sailing up the Thames to be officially named by the Queen. Sadly, during her trials, in rough seas off the Isles of Scilly one of her bows broke in half, so she was brought back to Totnes. She was eventually patched up

While in the Atlantic making preparations for the around the world race she began to break up, and the crew had to abandon ship, their hopes dashed.

There are however still parts of this yard dedicated to boat building, and repairs.

On to the Plains, we ventured down to the river to enjoy our refreshments, still

bathed in glorious sunshine. After a good break and lots of chatter, we headed back on the bicycle track, much of it up hill but in the shade, stopping from time to time to catch our breath and enjoy such stunning views.

It was such a relaxed walk, in great conditions, and lovely to meet 2 new members to Tramp plus a new paw.

June 22nd. Walk along Plymouth Sound at Jennycliff. Christine Wilson.

5 friends from Tramp joined me and a friend I had staying on 22nd June at Jennycliff car park

It was a lovely sunny warm day.

We stopped at the Bovisand cafe for a drink and ice cream and finished with a welcome panini at the Jennycliff café.

July 14th. Widdecombe Round. Vanessa Barton. 7 miles.

Wall-to-wall sunshine! There were 9 of us and no dogs in case it was too hot. It turned out to be the most glorious Dartmoor day with a northerly breeze keeping us cool. Nonetheless we set off from Widecombe prepared for the stiff climb up onto Hamel Down. The route took us past Grimspound which looked very sunny and too hot for a refreshment stop so we walked on and found a convenient log to sit on for our lunch. Our walk back to the start via Honeybag Tor and Bonehill was very pleasant. The real high was the drink at the end in the Rugglestone Inn sitting outside in the sun retracing our seven and a half mile walk on the OS sheet.



Weather Wag

August-September 2022

Right now -13th July, the weather is fantastic for some, a disaster for others. For all those at work, whether indoors or outdoors, it is very, very hot. There is almost no breeze to cool it down, even here on the coast. I am used to the wind at almost all times, but NOT today. The little there is, is very light and gives no escape from the high temperatures. The school year ends next week and that is often the cue for a change in the weather for the worse. Let's hope it is not so this year, pupils and staff need a good sunny, calm break for a week or two before beginning preparations for next year.

The farmers and gardeners are looking towards a sharp shower or two to freshen up the crops due for harvesting in the coming weeks. Most of the grain harvest is gathered in but there is still the veg. and other food crops to be harvested. The grass fields are beginning to look bare of new growth and sadly, farmers are having to dip into their winter feed, eg, silage and hay. Mother nature (or human interference) is having a hard time getting it right!

However, looking at the rainfall stats for this year and last year:- June 2021 40mm fell on 6 days, June 2022 33mm fell on 6 days. This means that if 2021 was dry, 2022 is even drier. Despite all this lack of rainfall it seems that our reservoirs are reasonably full. The moorland peat is doing its job, soaking up the rain and then releasing it slowly and replenishing the lakes of water for human usage. As long as we don't abuse this system bestowed upon us, we will be all right. The temperatures recorded last June were, on the whole below those of this year, it was a rather indifferent summer altogether. However, this year will be hotter and drier and will suit those who want to enjoy a good holiday and those whose income depends on the holiday-makers who come this way.

When there is a spell of very hot weather it is very often brought to a close with a thunderstorm. For a thunderstorm to occur, three things have to be present - warm air, moisture and an unstable air mass. We all know about warm air rising etc and then the formation of cotton-wool-like cumulus clouds. The more the air rises, the more condensation happens, latent heat is produced, warming the air further and feeding the process. So large thunder clouds are formed, the air continues to rise taking the clouds with it, until precipitation occurs and a downpour ensues. I, as a child, always counted the seconds from a flash until I heard the thunder and that was the distance away the storm was. Now I know that that is not far from the fact. The reason for the lag in time is that light travels through the air at a FAR greater speed than sound so the light arrives at the place where you are much earlier than the sound. Allow approx. 1 mile for every 5 secs interval. If the flash and thunderclap arrive at the same time, then the storm is directly overhead. Just as a concluding statement:- "Lightning strikes somewhere on the surface of the Earth about 100 times every second and at any moment 1,800 thunderstorms occur somewhere on the planet." These events help to fix nitrogen from the atmosphere into a form absorbed by the rain and form nitrates, a vital food source for plants.

Plenty of cloud cover today but not the towering cumulus clouds for a thunderstorm. So we still swelter and take cover from the extreme heat (take a leaf out of the Mediterranean coast dwellers and have a siesta mid afternoon!) Must go out into the garden and see if I can rescue some young veg plants.

Jan Turner

MALCOLM FRANKE BSc., FCA

invites you to discuss the **benefits** to you of using his

ACCOUNTANCY AND TAXATION SERVICES

The **benefits** include

- **Competitive, fixed fee quotes.**
- **Personal service from a qualified chartered accountant.**
- **Over 25 years experience of dealing with individual taxpayers and small businesses.**
- **Home visits as required, at your convenience.**
- **Integrity and confidentiality guaranteed.**
- **Free initial consultation.**

If you would like your affairs to be dealt with to your benefit, at your convenience, by a local professional person you can trust, simply give me a call on

01548-562320

Malcolm Franke & Co Ltd – Chartered Accountants

Campania, Links Road, South Milton, Kingsbridge, Devon, TQ7 3JR.

prestige painting

EXPERIENCED TEAM
OF DECORATORS

Sarah Mimpriss

m: 07747 772527

FULLY INSURED • TRUSTWORTHY
COMPETITIVE • RELIABLE



Relaxing Reflexology

A wonderfully relaxing
holistic therapy treatment

Fertility • Maternity • Menopause • PMT
Lymph drainage • Insomnia • Anxiety & Stress



Book to see me at
The Hen House, Kingsbridge
on **Wednesday 10am - 4pm**
and **Thursday 10am - 4pm**

Call 07912 044330
www.relaxingreflexology.com

South Hams Traditional Mole Catcher



Have you got a mole problem?

I am a traditional mole catcher

I only use humane traps

I do not use any form of poisons or gas and
therefore do not harm either the
environment or other animals

I also now deal with Rats, Mice and Wasps

Please contact me on either
01548 714142 or 07749 650220
or see my website
www.southhamsmolecatcher.co.uk

TAXI - MIKE

0771 451 2516

Six
Seater



Friendly
and
Reliable

Local and distance taxi service

All stations, airports and ports.

Local journeys: Kingsbridge, Salcombe,
Hope Cove, Galmpton, Thurlestone,
North Sands, South Sands, Bantham,
Bolberry, Soar Mill Cove, Malborough,
South Milton, Churchstow, Aveton Gifford,
Bigbury on Sea (Burgh Island), Loddiswell,
Plymouth, Exeter

E: taximike@salcombeanddistricttaxico.co.uk

www.salcombeanddistricttaxico.co.uk

LOCAL MEAT • FRESH FISH
SHELLFISH • PIES & PASTIES

**SALCOMBE MEAT CO
BUTCHERY & FARM SHOP**

FRUIT & VEG • HOMEWARES
ARTISANAL PRODUCE

PROUD TO BE LOCAL

Visit our brand new Salcombe shop for award-winning
home grown and locally sourced seasonal produce

Find us at Main Road, Salcombe TQ8 8NA,
online at salcombemeatcompany.co.uk or call [01548 843807](tel:01548843807).

THURLESTONE BAY BIRDS

10TH MAY TO 11TH JULY

This period of the year is always the quietest in terms of numbers of birds and species to be found around the area.

I was very fortunate to be sat overlooking the Bay on 11th May when a SPOONBILL flew towards Burgh Island. It's still a scarce bird here although there are several breeding sites in England; most of our records usually relate to migrant birds from France or Holland.



On 18th May *ARCTIC SKUA* flew south east towards Bolt Head - only the second record this year when normally I would expect at least 25. Similarly just one Spring record of a *GREAT SKUA* on 26th June again making its way towards Bolt Head - gone are the days when I have watched over 30 birds sit on the sea waiting for mist and fog to clear before continuing their migration to Northern Scotland and Scandinavia to breed.

The last week of June also produced the highest Spring passage of *MANX SHEARWATER* with 126 logged on 20th June flying across the Bay towards Burgh Island. However the highlight of the year so far occurred on 15th June when I watched a *CORY'S SHEARWATER* flying towards Burgh Island only 400 yards offshore. This is the earliest summer record and also the first for at least 5 years. These graceful birds skim low over the water. Their main breeding area is Madeira and the Azores from February with a migratory route after breeding taking them into the North Atlantic before returning later in the year.

A walk along the Buckland Valley on 30th May produced 32 species of birds with a mixture of both adult and the first juveniles of both *GREEN* and *GREAT SPOTTED WOODPECKER*, *CHIFFCHAFF*, *BLACKCAP*, *ROBIN*, *BLACKBIRD*, *SONG THRUSH*, *CHAFFINCH* and *BULLFINCH*. There were at least 2 nests of *HOUSE MARTIN* in the eaves of the old School - couldn't locate any at Clanacombe Lodge.

Breeding raptors appear to have had a good season with at least 2 pairs of *KESTREL*, several *BUZZARD* and at least 1 pair of *SPARROWHAWK*. Judging by the night time calling of *TAWNY OWL* they have also bred well. *BARN OWL* were also heard calling.

On South Huish Marsh breeding records for *MALLARD* (at least 5 pairs): 3 pairs of *CANADA GOOSE*, several *MOORHEN* and 1 pair of *COOT*. *SHELDUCK* are breeding along the cliffs in rabbit holes and at least 1 pair raised young on the Marsh.

The pair of *MUTE SWAN* were too young to contemplate breeding this year, however, as they mate for life, barring any accidents, they will stay to breed next year.

A small number of *SWIFTS* have bred at Thurlestone and Bantham. Returning migrants have already started to build up their strength for the long flight back to Southern Africa with up to 65 birds feeding over the cereal fields on the main road out of Thurlestone in early July.

Along the coast path there have been up to 3 pairs of breeding *WHITETHROAT*, 4 pairs of *STONECHAT* and many *LINNET* and *ROCK PIPIT*.

The largest *HOUSE MARTIN* breeding colony in our area still remains in the flats and houses alongside *SOUTH HUISH MARSH* although this year the maximum number of occupied nests is around 10 (previously up to 25). A pair of *SWALLOW* is breeding by the Golf Club and others are hidden away in the barns of local farms.

Finally, there is evidence of birds starting their return migration with 2 *TUFTED DUCK* on South Huish Marsh on 19th June. They were only there because of the blocked overflow pipe which resulted in an unseasonal high level of water.

Young birds will now be starting to move along the hedgerows and gardens - mine is already seeing ROBIN, BLUE and GREAT TIT, LONG TAILED TIT (1 family of 14) CHIFFCHAFF, BLACKCAP, BLACKBIRD, JACKDAW, CARRION CROW and MAGPIE.

With this very enjoyable spell of summer weather, the birds will be encouraged to attempt second broods with an abundance of insect life for them to feed on.

Mike Passman
thurlestonebaybirds.co.uk

Open Gardens

Two days before Open Gardens took place on June 26th the weather forecast was dismal, rain and strong winds all day. After weeks of preparation this was the last thing I and the other garden owners wanted. It brought back memories of the first time I organised this event on the 16th June 2016 and could not see the bottom of my garden for thick mist and rain. However, the forecast changed and on the 26th I woke up to blue skies with a strong westerly breeze.

The afternoon flew by with lots of locals plus 2nd home owners and holiday makers coming, all taking an interest in the very different gardens on show. Two new gardens owned by Hal & Vivien Plews and Paul & Lesley Ferguson were much admired. People were so impressed by how many plants could be grown in small spaces. The Old Rectory, Lower Kerse and mine at Yarmer have taken part each time. Diana and Stephen Parker-Swift are grateful to Tina and Rodney Stidston for cutting the hedge along the narrow road to their property as well as allowing a field to be used for parking.

The new owners taking part both said how enjoyable the experience was and how respectful and appreciative all the visitors were.

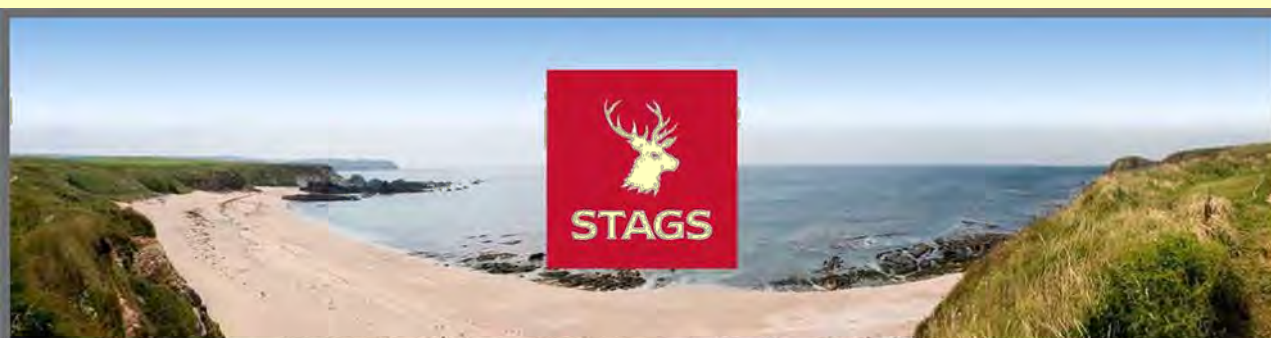
As well as a big thank you to all the garden owners I would like to thank the Village Hall committee members and others for making a wonderful supply of cakes for the teas. A special mention to Howard Coffell who has made a cake for the event each time and which each time is even better. Alison Daily, Jennifer Mackie and Jean Yeoman did splendid work serving the teas and they had a very busy afternoon. Also, thanks to all the others who helped with stewarding some of the gardens as well as selling plants at mine, Karen Barker, Mary Stanbury and Sarah Swift come to mind and were super plant sellers.

Overall, £866 was taken for Village Hall funds on the afternoon (the tickets were £2).

The atmosphere during the afternoon was friendly and uplifting, especially meeting people whom I had not seen for over two years since Covid struck.

Hopefully the event will happen again in two years-time and I hope a few more people will allow access to their gardens. Having visited gardens this year hopefully this will give people the confidence to open theirs. I already have two new possible gardens for 2024. As I always tell people this is NOT a competition but if you are proud of your garden just share your enthusiasm with others and the more different types of gardens the better. I never judge a garden. The only criterion is that the owner wishes to share theirs.

SUE DWYER



The West Country is Stags Country

- Network of 21 West Country offices and supporting London Office
- Dedicated specialist departments covering all property sectors
- Professional and enthusiastic staff providing a quality service
- Experienced teams with extensive knowledge of their local areas
- Support at every step of the way, from valuation through to completion

Whether you are selling a waterfront home or a rural property further inland, we'll provide you with exceptional customer service and local knowledge that comes with over 145 years of experience.

01548 853131 | kingsbridge@stags.co.uk | stags.co.uk



CORNWALL | DEVON | SOMERSET | DORSET | LONDON

WORDWISE

**Christian Bookshop,
Resource Centre
& Coffee Shop**

41 Fore Street, Kingsbridge

**a selection of Christian
books, cards and music**

**speciality teas, coffees
and delicious home-made
cakes**

**Open Monday to Friday
10.00 am to 4.00 pm**

Volunteers always welcome

01548 856571

email: wordwisekingsbridge@outlook.com

www.wordwisekingsbridge.co.uk

Charity No. 1098305



Kingsbridge
Chiropody and Podiatry

Lucille Tomlinson BSc (Hons), MChS

Sallie Broadgate DPodM, MChS

Karen Murphy, BSc (Hons), MChS

HCPC registered Podiatrists

Our team of friendly, well experienced and very qualified podiatrists are able to offer you a full range of footcare treatments, from basic nail and skin care (corns, callus etc), through to nail surgery and biomechanics.

Treatments can be carried out at both our central Kingsbridge surgery and in your own home.

To book please call us on

01548 852042

www.kingsbridgechiropodyandpodiatry.co.uk

7 Victoria Place, The Promenade,
Kingsbridge, Devon TQ7 1JG



SAVAGE SCAFFOLDING

PROVIDING PROFESSIONAL AND
RELIABLE SCAFFOLDING SERVICES
OUR FAMILY BUSINESS TAILORS
EACH PROJECT TO OUR CLIENTS
SPECIFIC REQUIREMENTS.

SAVAGESCAFFOLDING.CO.UK
INFO@SAVAGESCAFFOLDING.CO.UK

01548 560519
07512 645337



South Face Garden Care

Maintaining Distinctive
Gardens with an Experienced,
Qualified and
Sensitive
Approach

to include:
Regular Garden
Maintenance
Planting Design
Hedge & Tree Work
Formal Pruning
Fruit Tree Care

- Local business
- Fully insured
- References available

Telephone
Jason on
**01548
830910**
or
07976 726753
jason@sflgardens.co.uk



www.let-it-out.co.uk

*The flexible approach
to letting your holiday home*

Gail Critchlow
07889 628514

Liz Baker-James
07388 673228

NOCTURNAL FLYERS VISITING A THURLESTONE GARDEN

The number of moths and the wide range of species recorded continues to amaze. Until lockdown when I purchased my first moth trap, I was unaware of the flights of moths occurring after sunset. Late nights are now regular with the following mornings spent identifying and recording moths caught.

To give you an idea of the level of activity - in May I logged 1100 moths of 122 species, June produced 2700 moths of 170 species and the first 11 days of July 791 moths of 118 species - and I was away visiting family from 2nd to 6th July. The total number of different species for this year is 245.



I was also unaware of some migrant species which arrive from France, Spain and even North Africa. Around the third week of May there was a spell of warm air drifting on light southerly winds from Africa - evidenced by "Saharan" dust covering my car, this also produced some outstanding records - *STRIPED HAWK MOTH* - A very scarce visitor to Devon this year I was fortunate to have 2 - one on the 19th May and another on 21st May.

A similar weather system around 16th June resulted in several immigrant species - *SMALL MOTTLED WILLOW* - a resident of the Channel Islands, *BORDERED STRAW* - another north Europe species with singles occurring on 17th and 22nd June, also a few *L ALBUM*, *WAINSCOT* and *RUSTY DOT PEARL*.



Some of the more striking and large moths are those of the Hawk family since the first *POPLAR HAWK* was recorded on 5th May another 7 have arrived, the largest of this family is the *PRIVET HAWK*, females can reach 55mm in size - so far 14 have been recorded although the highest total in a night is only 2. *LIME HAWK* are scarce visitors to my garden - this year just 2 have been noted. *EYE HAWK* (part of their wings when disturbed show large "eyes" to deter predators), first recorded on 6th June so far 5 have been seen. By far the most numerous is the *ELEPHANT HAWK* with 104 recorded so far - can arrive in large numbers the highest total for a night is 17. Finally, a first garden sighting of a *HUMMING BIRD HAWK* on Sunday 10th July - yes it hovers over plants like a Humming Bird.

Some of the more unusual species new to me this year have been *GHOST MOTH* - the male is white whilst the female has yellowish orange wings.

Another family group is *TIGERS* - some of these are day time flyers so can be found resting on walls of houses - this year so far there have been - *CREAM SPOT TIGER*, *GARDEN TIGER* (both of these have black and white wing patterns) and *CINNABAR* (wings of black and red) - very soon should be *JERSEY TIGER* and *RUBY TIGER*.

With the remnants of Thurlestone Marsh being adjacent to my garden one of the family of moths resident in marsh type habitat is the leaf eating *WAINSCOTS* -

although they number 24 different species some are restricted to the East Anglian fens. So far this year I have recorded - *COMMON WAINSCOT*, *STRIPED WAINSCOT*, *SHORE WAINSCOT*, *SOUTHERN WAINSCOT*, *SMOKY WAINSCOT*, *SHOULDER STRIPED WAINSCOT*. During the remainder of July and August I hope to add *LARGE WAINSCOT*, *DEVONSHIRE WAINSCOT*, *BULRUSH WAINSCOT*, *TWIN SPOTTED WAINSCOT* and *SMALL WAINSCOT*.



The best weather conditions for attracting moths are warm calm nights with cloud to minimise the impact of the moon, an overnight shower of rain can be most productive. In the past two weeks (prior to 11th July) I have been recording in excess of 150 moths on several nights. Opening up the traps early the following morning is just like Christmas - you never know what is inside the trap.

Many of the moths I have referred to can be seen in full colour detail on my website thurlestonebaybirds.co.uk - look for the headings - Moth Photos

Mike Passman

Thurlestone Phone Box

We thoroughly enjoyed the wonderful celebrations and tributes in Thurlestone for the Queen's Platinum Jubilee. It was an event that brought the whole community together.

I would like to thank everyone for their help in decorating the Phone Box for this occasion. It really was a team effort involving all our committee members. Kit and Gillian Marshall, Margaret Houghton, Diane and Paul Martin, Lesley Kalisher and David Horne.

Also, a very big thank you to the children and staff of All Saints Academy for their lovely bunting, so many people commented on their original designs and talent!



Finally, a very special thanks to the local gardeners who generously donated beautiful flower arrangements, they really added a splash of colour to our display and were admired by many.

What comes next?

Halloween probably! Unless you can think of another event which warrants a display? Most of the committee will enjoy a rest throughout the summer, apart from Diane who is very busy organising wedding greetings for couples getting married in the Church!

Mary Horne



Timber-Jack

4 Island View Thurlestone Kingsbridge TQ7 3NH

07866 696 307

01548 560564

WWW.TIMBERJACK.CO.UK

E mail:
info@timber-jack.co.uk

As well as our existing business of landscaping services, tree surgery and log supplies, we are pleased to announce that we also offer comprehensive Chimney Sweeping services.

Chimney Sweeping

We are committed to providing a thoroughly professional service towards all aspects of chimney care. Our qualified staff will treat your home like their own and ensure that you are totally satisfied with all aspects of our visit.

Rayburn & Multifuel burners

Inglenook fire places

Traditional chimneys

Advice on getting the best from your burner

AGA flues

Twin & flexi lined systems

Smoke draw test

Chimney Certificates Issued



Pol No:5500 26209



Reg No: 0784



STUDIO Flowers

Independent Family Business

For All your Floristry Designs

Weddings & Parties

Anniversaries & Engagements

Birthdays & Thank yous

Funerals & Sympathy

Deliveries throughout the South Hams
Look out for the red van!

Contact Lisa
T - 01548 854546
M - 07855 321759

Unit 2N
South Hams Business Park
Churchstow
Nr Kingsbridge
TQ7 3QH



www.devon-florist-delivery.co.uk

Carers Direct (SW) Ltd

Do you, or anyone you know, need some extra help to remain independent at home?

We provide Homecare in the South Hams area and we can visit for any length of time from 1 hour to 24 hours. Night time sleeping, sitting or waking nights are available.

Our Carers are friendly, local, reliable and experienced and can help with personal care, shopping, companionship, outings and appointments etc.

Call the office for a chat 01548 854358 and speak to Sally, Lynda or Rachael.

Email us: sally.richardson@outlook.com

Website: www.carersdirect-sw.co.uk

Registered with the Care Quality Commission
(101719924)

Member of Co-Operatives UK

Registered Office:

Unit 2N First Floor, South Hams Business Park,
Churchstow, Kingsbridge, TQ7 3QH

ALL ROOFING PROBLEMS

Nobody covers you better!!

**SLATE - TILE - FLAT
LEADWORK**

**LEAKS - REPAIRS
GUTTERING**

VELUX WINDOWS



*** S.A.YEOMAN ***

Quality Work at Realistic Prices



Tel: 01548 561174

Mob: 07525 710453

CHINESE CHICKEN

Ingredients

3 to 4 cups of diced chopped chicken
1 cup chopped celery
1 cup chopped onion
½ cup almond flakes
1 cup sliced water chestnuts
1 cup good mayonnaise
1 can of condensed chicken soup
2 tablespoons pimentos (or season with fresh ground pepper)
2 tablespoons lemon juice
Salt to taste
2 bags plain crisps (crushed)

Method

Combine the ingredients and spoon into a flat ovenproof dish.
Cover with the crushed crisps.
Bake at Gas Mk 5 or 170 C for ¾ to 1 hour until golden brown.

BBQ CHICKEN KEBABS

675g/1.5lb boned and skinned chicken breasts, cut into 2.5cm/1" pieces
1 tsp salt
2 tbl lemon juice
1 tbl fresh ginger, peeled and very finely grated
2 cloves garlic, peeled and crushed
1 tsp ground cumin
1 tsp bright red paprika
¾ tsp cayenne
6 tbl tomato ketchup
freshly ground black pepper
¼ tsp turmeric
3 tbl corn/peanut oil

Method

Put chicken in a bowl. Add the salt and lemon juice and rub them in. Prod the chicken lightly with the tip of a knife and rub the seasonings in again. Leave for 20 mins. Add the next 8 ingredients, mix well, cover and refrigerate for 6-8 hrs or longer. Thread the meat on to skewers, brush with oil and cook on BBQ or under a heated grill for approx 6 mins each side or until lightly browned and cooked through.



RASPBERRY AND ALMOND TRIFLE

Ingredients

6 bought sponge fingers
3 tbl raspberry jam
125ml medium dry sherry/raspberry liqueur
350g raspberries
10 macaroons/ ratafia biscuits, crushed
600 ml bought custard (Madagascan Vanilla is excellent for this)
150ml cream, whipped (optional)
flaked almonds, toasted

Method

Split the sponge fingers and sandwich together with the jam. Arrange in the base of a deep serving dish. Pour over the sherry and cover with the raspberries. Sprinkle over the crushed macaroons and level gently. Pour over the thick custard. Decorate with cream, if using, sprinkle with flaked almonds and serve chilled.



Grey Matter

A BOTTLE OF WINE to the first all correct entry (or the closest to correct – if you don't have all the answers, send in your entry anyway – you never know!) drawn on 1st September 2022. Please submit entries to: 5 Mead Lane, Thurlestone, TQ7 3PB or email:

cgwonthenet@themed.co.uk

UNDERGROUND STATIONS

There are 2 types of clue to help you find the names of stations on the London Underground. Enjoy your journey.....

CRYPTIC

Eg Red rose entrance (9,4) (answer) Lancaster Gate

1. Do Abba get on here? (8)
2. Lager for roosters? (11)
3. Alpine dwelling (5,7)
4. Sardine packing centre perhaps (7,4)
5. Green space where people wait in line (3,7)
6. Beeping horns on New York thoroughfare (7,8)
7. Female septuplets? (5,7)
8. Celestial body seen here (5)
9. Where blackboard writers are grown? (5,4)
10. Oriental pig meat (4,3)
11. Where clowns train for their degree (6,6)

ANAGRAMS

Eg Nodding tap (10) (answer) Paddington

1. Risk car flab (11)
2. Bank rout (5,3)
3. Tough seat (9)
4. He rang Neal (6,4)
5. Blow denim (9)
6. White roll (5,4)
7. Pert toilet lovers (9,6)
8. Un moment (8)
9. Ginger hall (6,4)
10. Our scarlet (5,5)
11. Len's mine (4,4)

Solutions to the previous Grey Matter:

1. Living Doll, Cliff Richard 2. All Shook Up, Elvis Presley 3. Sloop John B, Beach Boys 4. Here Comes The Sun, The Beatles 5. Breaking Up Is Hard To Do, Neil Sedaka 6. Homeward Bound, Simon and Garfunkel 7. Holding Back The Years, Simply Red 8. Heart Of Glass, Blondie 9. The Night Watch, Rembrandt 10. The Kiss, Gustav Klimt 11. The Last Supper, Leonardo Da Vinci 12. The Birth Of Venus, Sandro Botticelli 13. The Hay Wain, John Constable 14. The Sleeping Woman, Pablo Picasso 15. Going To The Match, LS Lowry 16. Tea In The Garden, Beryl Cook 17. East Of Eden, John Steinbeck 18. Bleak House, Charles Dickens 19. War And Peace, Leo Tolstoy 20. The Magic Finger, Roald Dahl 21. Tom Jones, Henry Fielding 22. Sons And Lovers, DH Lawrence 23. The Shining, Stephen King 24. Brave New World, Aldous Huxley.

There were 3 all correct answers last month. First out of the hat and winner of the coveted bottle of wine is Howard Dingley and Marian Bushell. Commiserations to David and Mary Horne, and Viv Gibby.

canec

custom home electrical

With over 30 years experience, working closely with our clients,
we find efficient solutions for your home

Design • Installation • Testing

- Intelligent Lighting
- Home Data Networks
- Green Energy

Tel: 07731 689571 / 01548 821500

Email: simon@canec Ltd.com
www.canec Ltd.com

Insured
Compliant
Experienced



FLEAR HOUSE INTERIORS LTD

Old Station Yard,
Kingsbridge TQ7 1ES
tel: 01548 856660

email: flearhouse Ltd@btinternet.com

- Curtain and Upholstery Fabrics
- Made to Measure Curtains, Roman Blinds, etc
- Curtain Poles, Tracks and Wallpapers
- Roller, Vertical, Venetian and Velux Blinds



South Hams
Wills & Probate

Your local
cost-effective
alternative to
solicitors

Wills

Probate

Lasting Power of Attorney

Inheritance Tax Planning

Trusts

Call Vanessa (Chartered Accountant)
on **01548 858806**

mail@southhamswills.co.uk
www.southhamswills.co.uk

Your Local Community Insurance Broker



SABRE
INSURANCE SERVICES

Contact Robert Came Tel: 01548 852853

13 Church Street, Kingsbridge, Devon TQ7 1BT

Tel: 01548 852853 www.sabreinsuranceservices.co.uk

Sabre Insurance Services is a trading title of Sabre Hind Ltd.
Registered In England no: 4325743 Sabre Hind Ltd. is Authorised and Regulated by the Financial Conduct Authority



***Claire
Louise Hill***

***Professional Painter and
Decorator***

***Home 01548 714211/ mobile
07976129162***

***Award Winning – Fully Qualified –
Fully Insured***



**PLYMPTON & SOUTH HAMS
GARAGE DOORS,
GATES AND AWNINGS**

www.plymptonandsouthhamsgaragedoors.co.uk

Call: 01752 348 488



markilux

ALUROLL



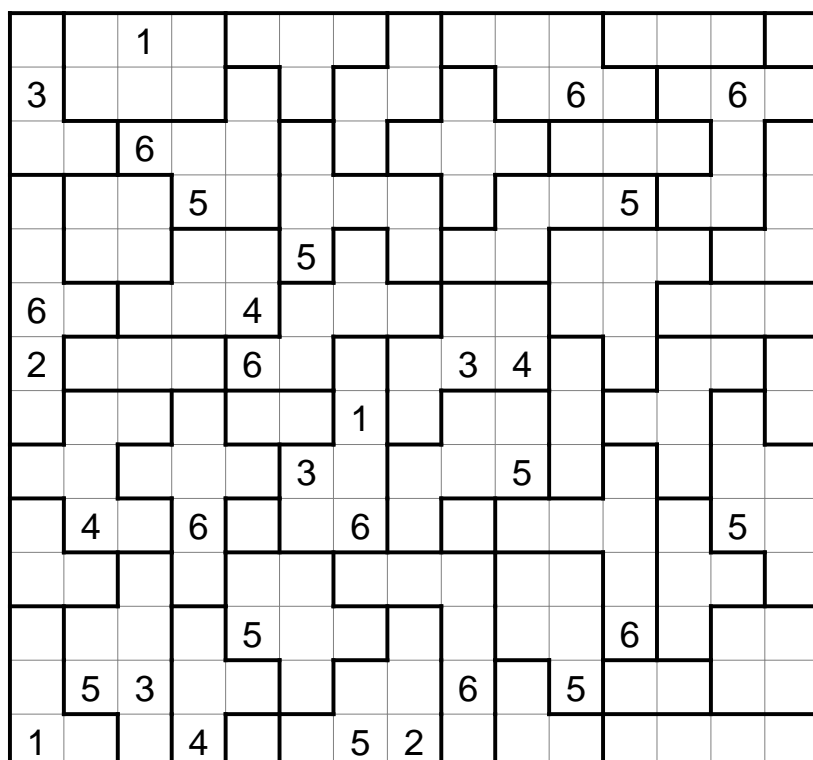
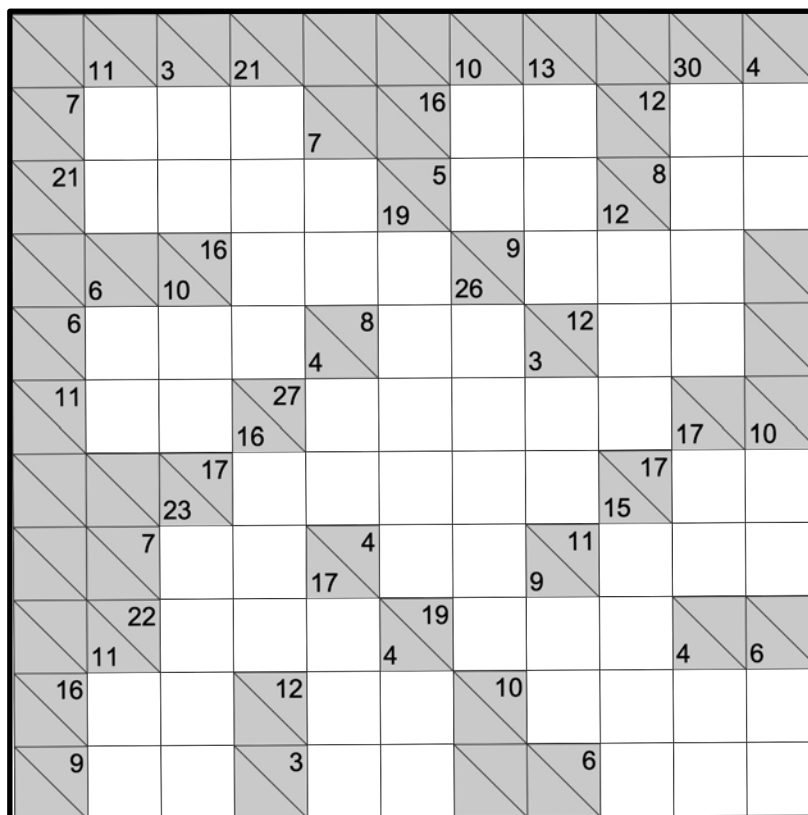
**SUPPLY AND FITTING OF A
RANGE OF GARAGE DOORS,
AWNINGS, AND ELECTRIC GATES**

PUZZLE EXTRA

Here are some extra puzzles for you to do while sitting in or out of the sun. There will not be a prize for these.

Kakuro

This is a mixture of logic and number skills. Fill the grid so that each block adds up to the total in the box above or to the left of it. You can only use the digits 1-9 and you must not use the same number twice in a block.



Suguru

The grid comprises outlined shapes of between 1 and 6 squares. A single-square shape contains the digit 1, a shape of two squares contains the numbers 1 and 2, and so on. No number may be repeated in a neighbouring square (including diagonally).

DIARY DATES

August

Monday	1-6	Salcombe Town Regatta
Saturday	6	Kingsbridge Farmer's Market 9am to 1pm
Saturday	6-12	COLOUR CRIME 2 - Exhibition of Paintings by Paul Kane at the Thurlestone Hotel. In aid of Medecins Sans Frontiers - Doctors without Borders
Sun	7,14,21,28	A walk on the wild side – Sundays guided nature walks for families with Ken Neal at Dittiscombe Estate near Slapton 10am. Adults £10 Children Free
Thursday	11	TRAMP - Loddiswell Circumnavigation and Avon Valley 6.25 miles - Alastair and Gill Durden
Saturday	13-14	Two Day Vintage Working Rally at Sorley Cross
Monday	15	TRAMP - Soar - Harry Forrester
Monday	15-23	Totnes and Bridgetown Festival of Arts and Culture in the Civic Square
Wed	17-18	The British Fireworks Championship in Plymouth - Fireworks at approximately 9.30pm
Saturday	20	Kingsbridge Farmer's Market 9am to 1pm
Sunday	21	LOVE YOUR PARK 2022 - A celebration of Kingsbridge Recreation Ground 11am to 4pm
Sunday	21	Celebrate Start Bay from 11am to 5pm at FSC Slapton Ley Field Centre
Wednesday	24	TRAMP - Dartmeet and Brimpts Woods - Tricia Wilson and Jenny Webb
Wed	24-27	Dartmouth Royal Regatta
Friday	26-29	Hope Cove Weekend
Monday	29	August Bank Holiday
Wednesday	31	TRAMP - Ivybridge and Erme Valley - Linda and Gareth Scott

September

Saturday	3	Kingsbridge Show, Borough Farm, Kingsbridge. Gates open at 9am
Saturday	3	Kingsbridge Farmer's Market 9am to 1pm
Sunday	4	Bowringsleigh Open Gardens, West Alvington 2pm to 5pm - in aid of St Luke's Hospice
Monday	5	Parish Council Meeting Thurlestone Parish Hall 7.30pm
Tuesday	13	TRAMP - Noss Mayo and 9 mile drive in a clockwise direction - Eric and Liz Candy
Saturday	17	Kingsbridge Farmer's Market 9am to 1pm
Saturday	17	Vintage Bus Running Day
Monday	19	TRAMP - Wistmans Wood, Dartmoor 6.5 miles - Neil Mackay
Wed	21-24	KATS (Kingsbridge Amateur Theatrical Society) presents Calendar Girls (play version) by Tim Firth, Malborough Village Hall 7.30pm Tickets £12
Monday	26	TRAMP - Plymbridge and Boringdon 4.5 miles - Gareth and Linda Scott
Wednesday	28	Kingsbridge Arts Society, Methodist Hall and on Zoom 2 for 2.30pm - "Architecture + Photography = Art". A talk by Brian Slater
Friday	30	Kingsbridge Estuary U3A - Open meeting at Malborough Village Hall 10am until noon

October

Saturday	1	Thurlestone Parish Hall Autumn Fair
Monday	3	Parish Council Meeting Thurlestone Parish Hall 7.30pm

Car Boot Sales every Sunday from 19 May to 29 September (excluding 21 and 28 July)
Kingsbridge Quay Car Park 9am - 12noon - in aid of various local charities

Bolberry Down Parkrun. A free, weekly, timed 5k walk/jog/run at 9:00am every Saturday.
Details at www.parkrun.org.uk/bolberrydown/ or on Facebook.

Using Kinesiology & Vibrational Healing, I help to deal with issues such as:



- ✦ *Emotional stress & anxiety*
- ✦ *Physical pain & tension*
- ✦ *Lack of energy & concentration*

Via one-to-one & online sessions, workshops and retreats, I work to improve your physical, emotional & spiritual wellbeing.

Your session will leave you feeling grounded & balanced and able to enjoy:

- ✦ *Less stress & better sleep*
- ✦ *Increased energy & focus*
- ✦ *More confidence & feeling empowered*

Please feel free to get in touch and see how I can help you towards better wellbeing.

Marilu Wren - Energy Practitioner
07974 718067 - West Buckland
www.heraholistic.co.uk

THE DOG LODGE



***** Luxury Licensed *****

***** Boarding *****

Viewing welcome by appointment

7.30 am - 10.00 am

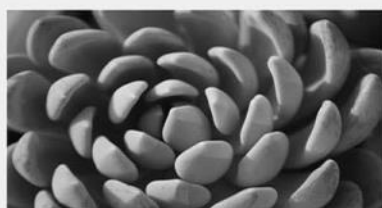
5.00 pm - 7.00 pm

Tel: 01548 581159

www.dog-lodge.co.uk

Avon Mill

Café & Deli • Garden Centre
Art & Craft • Boutique • B&B • Gift Shop



- Riverside setting
- Local art & crafts
- Dogs welcome
- Plenty of parking
- Breakfasts & lunches
- 'Devon Cream Teas'

Loddiswell • Kingsbridge • Devon • TQ7 4DD Tel. 01548 550338

www.avonmill.com

Carpets & Vinyl

Bathroom Acc.

Table Mats

Blankets

Aprons

Chairs

Trays

Beds

Mugs

Blinds

Pillows

Furniture

Net Curtains

Rugs & Matting

Est. 1873

www.jhdonovan.co.uk

Donovans

d e p a r t m e n t s t o r e

49 Fore Street, Kingsbridge

Tel (01548) 852342

Soft Furnishings

Kitchenware

Hardware

Bedding

Duvets

China

Pans

Gifts

Glass

Towels

Curtains

Recliners

Picnic Ware

Curtain Tracks

Free measuring and estimates with professional fitting

Devon
H E A R I N G 

ENJOY HEARING AGAIN

Award winning, independent hearing care
in Devon.

- Free hearing tests
- Latest hearing technology
- Ear Wax removal
- Lifelong aftercare

Call to book your free hearing assessment
01548 852852

Book online
www.imperialhearing.com/devon

22 Fore Street, Kingsbridge TQ7 1NY

GMJ CHIMNEY SERVICES

SERVICE & INSTALLATION
OF WOODBURNING &
MULTIFUEL STOVES

CHIMNEY SYSTEMS – FLUE LINERS
COWLS - CHIMNEY SWEEPING
CCTV FLUE INSPECTIONS

ICS & HETAS REGISTERED

TEL 01548 858710

GMJCHIMNEYSERVICES@GMAIL.COM

GMJCHIMNEYSERVICES.COM

CONTACT INFORMATION

CLUBS & GROUPS

ALVINGTON SINGERS (Wed 7pm - 9pm)	Contact	Liz Coates	562295
ART CLASS (Tues 11am - 1pm)	Contact	Marianne Smith	531413
AUNE CONSERVATION ASSOCIATION	Chairman	Stuart Watts	810373
BADMINTON CLUB (Fri 4pm - 5pm)	Contact	Sian Hodges	07784893405
BANTHAM SAILING CLUB	Secretary	Nikki Smith	560275
BANTHAM SURF LIFE SAVING CLUB	Clubhouse		560447
BRIDGE CLUB (Wed 6.15pm)	Contact	Lisa White	560505
BUCKLAND PHONE BOX	Contact	Anna Martin	560796
FITNESS YOGA WITH SUZI Mon 6pm - 7pm	Contact	Suzi Griffiths	07557334802
FRENCH CONVERSATION Thurs 1.30-3.30pm	Contact	Angela Luckhurst	521595
FRIENDS OF THURLESTONE CHURCH	Contact	Phil Millard	560843
HEALTHY MOVEMENT (Mon 9am - 11.30am)	Contact	Saffron Craig	07840788511
LINE DANCING (Wed 2pm)	Contact	Sue Bain	07989817898
MUM'S BOOTCAMP (Tues and Thurs 5.45pm)	Contact	Kat Wallace	07500870162
PARISH OF THURLESTONE SOC (POTS)	Chairman	Chris White	560505
SANDYGATE MARTIAL ARTS Monday 6.30pm	Contact	sandygatemartialarts@gmail.com	
SEA BEYOND PILATES	Contact	Sharron05@btinternet.com	
SOUTH HAMS MARTIAL ARTS Monday 3.45	Contact	southhamstraining@gmail.com	
STITCH and BITCH	Contact	Sally Martin	561356
TABLE TENNIS (Thurs 7.30pm)	Contact	Paul Ferguson	07866802800
THURLESTONE GOLF CLUB	Office & General Enquiries		560405
TENNIS SECTION (at Golf Club)	Book via Pro Shop		560715
THURLESTONE PHONE BOX	Contact	Mary Horne	561853
THURLESTONE SINGING GROUP	Contact	Alastair Durden	560509
TRAMP (Thurlestone Ramblers)	Contact	Mike Stickland	560763
YOGA with Sarah (Tues and Thurs 9.15am)	Contact	Sarah Scott	07879627939

HEALTH CENTRES

Norton Brook Medical Centre, Cookworthy Road, Kingsbridge TQ7 1AE	853551
Redfern Health Centre, Shadycombe Road, Salcombe TQ8 8DJ	842284
Minor Injuries Unit (NOT 24 Hrs) South Hams Hospital, Kingsbridge TQ7 1XT	852349
Non-emergency NHS Direct	111

POLICE

Emergency 999 Non-emergency 101

RUBBISH COLLECTION - Wednesdays. August Bank Holiday week - check SHDC Waste and Recycling website

Recycling Boxes 1 and 2, Reusable White Sack, and Food Waste Caddy - EVERY WEEK

Brown Bin (garden waste) alternate Wednesdays from 3rd August

Black/Grey Bin (non-recyclable landfill) alternate Wednesdays from 10th August

RECYCLING CENTRE - Torr Quarry Site, Totnes Road, Kingsbridge TQ9 7QQ T:0345 1551010

Opening Hours:

Mon - Fri 9.00am to 5.00pm, Sat - Sun 10.00am to 6.00pm (1st April - 30th September)

Mon - Fri 9.00am to 4.30pm, Sat - Sun 10.00am to 4.30pm (1st October - 31st March)

TOURIST INFORMATION CENTRES

Kingsbridge T: 853195, Salcombe T: 843927, Totnes T: 01803-411183, Dartmouth T: 01803-834224

LIBRARIES

Kingsbridge - Ilbert Road, Kingsbridge TQ7 1EB T: 852315 (closed all day Thur, Sat and Sun)

Mobile library visits Thurlestone Parish Hall Car Park Wednesdays August 10th and September 7th between 15.10pm to 16.00pm.

TRAVEL & TRANSPORT

Local Bus Service - Tally Ho! Service No. 162 - Destinations from Thurlestone (Bus stop by Shop) are:- Kingsbridge, South Milton, Malborough, Galmpton and Hope Cove.

For timetable contact Tally Ho! on 01548 853081 or see www.tallyhocoches.co.uk/162-timetable

For other Bus, Rail and Coach information contact Traveline South West T: 0871 2002233 (7.00am - 10.00pm)

Taxi Companies - Taxi-Mike (0771 4512516) - see advert in this magazine

PARISH INFORMATION

PARISH COUNCIL

Meetings take place on 1st Monday of every month except August

Chairman	Jill Munn	560732
Vice-chairman	Vacant	
Parish Clerk	Kathy Harrod	thurlestoneparish@gmail.com
Members	Sue Crowther	560098
	Paul Gunning	07971 378121
	Rosa Lewis	07463 856156
	Adam Ryan-Carter	562708
	Gillian Stone	07967 666719
	Sian Williams	560339
District Councillors	Mark Long	843828 (Tree Warden)
	Judy Pearce	561370
County Councillor	Rufus Gilbert	856659

PARISH HALL (see Thurlestone Parish Website for more details)

Telephone (Payphone in foyer) 562189

Chairman: Vacant

Bookings: Diane Martin email: via Parish Website or directly on tphbookings@gmail.com
or telephone 560070 Mon to Sat 9.30am - 5.30pm

THE PARISH HELPLINE Co-ordinator Milla 07711 870337

PARISH WEBSITE (www.thurlestoneparish.co.uk) Mike Bone 288436 Paul Martin 560070

ALL SAINTS' CHURCH

See All Saints' Diary pages earlier in magazine

Church Meeting Room Telephone 561246

ALL SAINTS PRIMARY SCHOOL Executive Head Miss Lesa Garside 560494

THURLESTONE POST OFFICE & STORES Contact Sarah Tyers 561917

Shop Opening Hours	Mon, Tues, Thu, Fri	8.00am - 5.00pm
	Wednesday	8.00am - 4.00pm
	Saturday	8.00am - 2.00pm
	Sunday and Bank Holidays	8.30am - 2.00pm

Post Office Hours	Mon, Tue, Thu, Fri	9.00am - 4.00pm
	Wed	9.00am - 1.00pm
	Sat	9.30am - 12.30pm
	Sun	Closed

Last postal collection: 4.00pm Monday to Friday; Noon on Saturday; NO collection on Sunday.

BANTHAM VILLAGE STORES & COFFEE SHOP Contact Kelly Seymour 560645

Opening Hours	August	Every Day	9.00am - 2.30pm
		Thursday, Friday, Saturday	5.00pm - 7.00pm
	September	Every day	9.00am - 2.30pm

PUBS

The Village Inn (Thurlestone) - 563525

The Sloop Inn (Bantham) - 560489

Organic Milk Delivery- How Now Dairy 01752 466870 - Monday and Thursday

PARISH DEFIBRILLATORS

- Thurlestone Parish Hall
 - Thurlestone Hotel (Garage)
 - Golf Club (Tennis Pav Wall)
 - Sloop Inn Bantham (Lobby)
 - Bantham Quay
 - Buckland Phone Box
- Scan the QR Code to see these locations on a map

